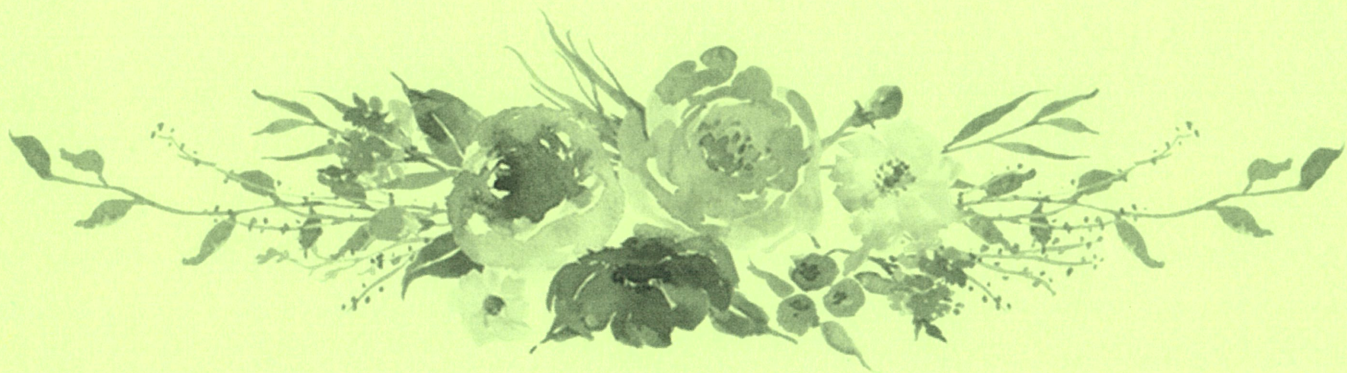


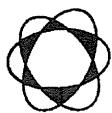
# ภาคผนวก จ

เอกสารสอบเทียบเครื่องมือที่ใช้ในการตรวจวิเคราะห์









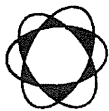
Thai Environmental Technic Limited  
บริษัท เทคนิคสิ่งแวดล้อมไทย จำกัด

ตารางการสอบเทียบเครื่องมือที่ใช้ในการตรวจวัดและวิเคราะห์

Item	Description	Parameter	List of Equipment	Equipment No.	Calibration	Next Calibration
1.	Ambient Air	TSP	ORIFICE TRANSFER STANDARD/Tisch	S/N 0068	21/09/2022	September 2023
			High Volume Air Sampler/TET	S/N TSP-1	04/07/2023	July 2024
			High Volume Air Sampler/TET	S/N TSP-13	05/07/2023	July 2024
			High Volume Air Sampler/TET	S/N TSP-18	05/07/2023	July 2024
			High Volume Air Sampler/TET	S/N TSP-4	04/07/2023	July 2024
			High Volume Air Sampler/TET	S/N TSP-25	04/07/2023	July 2024
			High Volume Air Sampler/TET	S/N TSP-28	13/07/2023	July 2024
			High Volume Air Sampler/TET	S/N TSP-39	05/07/2023	July 2024
			Electronic Balance/METTLER TOLEDO	S/N 1116392227	11/04/2023	April 2024
			ORIFICE TRANSFER STANDARD/Tisch	S/N 0068	21/09/2022	September 2023
2.	Water	PM-10	High Volume Air Sampler/TET	S/N PM10-11	04/07/2023	July 2024
			High Volume Air Sampler/TET	S/N PM10-18	05/07/2023	July 2024
			High Volume Air Sampler/TET	S/N PM10-20	13/07/2023	July 2024
			High Volume Air Sampler/TET	S/N PM10-22	11/07/2023	July 2024
			High Volume Air Sampler/TET	S/N PM10-26	11/07/2023	July 2024
			High Volume Air Sampler/TET	S/N PM10-27	13/07/2023	July 2024
			High Volume Air Sampler/TET	S/N PM10-29	05/07/2023	July 2024
			Electronic Balance/METTLER TOLEDO	S/N 1116392227	11/04/2023	April 2024
			pH Meter/Horiba F-71G	S/N V3B1F8H3	01/11/2022	November 2023
			Electronic Balance/METTLER TOLEDO	S/N 1116392227	11/04/2023	April 2024
			Electronic Balance/METTLER TOLEDO	S/N 1116392227	11/04/2023	April 2024
		Sulfate	Spectrophotometer/PerkinElmer	S/N 365K9042909	01/11/2022	November 2023
		Fe	ICP394/PerkinElmer/OPTIMA8000	S/N 078N1310024C	03/04/2023	October 2023
		Turbidity	Turbidity Meter/EUTECH TN-100	S/N 2655003	31/10/2022	October 2023







Thai Environmental Technic Limited  
บริษัท เทคนิคสิ่งแวดล้อมไทย จำกัด

ตารางการสอบเทียบเครื่องมือที่ใช้ในการตรวจวัดและวิเคราะห์ (ต่อ)

Item	Description	Parameter	List of Equipment	Equipment No.	Calibration	Next Calibration
3.	Sound Level	Leq 24 hr	Sound Level Calibrator/TENMARS TM-100	S/N 181203570	16/01/2023	January 2024
			Integrated Sound Level/ACO TYPE 6226	S/N 070049	24/09/2023	31/10/2023
			Integrated Sound Level/ACO TYPE 6226	S/N 110097	24/09/2023	31/10/2023
			Integrated Sound Level/ACO TYPE 6226	S/N 160215	24/09/2023	31/10/2023
			Integrated Sound Level/ACO TYPE 6226	S/N 160216	24/09/2023	31/10/2023
4.	Vibration	Vibration	Vibration Meter/Micromate	S/N UM16047	17/01/2023	January 2024





## CERTIFICATE OF CALIBRATION

Certificate No. : COF-008-66

Page 1 of 2 Pages

**MEASUREMENT ITEM** : Top Load Orifice  
**MANUFACTURER** : TISCH  
**MODEL/TYPE** : TE-5025A  
**SERIAL NUMBER** : 0068  
**ID NUMBER** : -  
**CONDITION AS-RECEIVED** : Used item  
**CUSTOMER** : Thai Environmental Technic Limited.  
1/6 Soi Ramkhamhaeng 145, Khwaeng/Khet Saphan Sung,  
Bangkok 10240

**RECEIVED DATE** : 08 Aug 2023  
**MEASUREMENT DATE** : 17 Aug 2023  
**ISSUE DATE** : 17 Aug 2023

**Calibration procedure:**

The Orifice gas flow device was calibrated against Standard Rotary Displacement Meter (Roots Meter) Model G65/IMC/W2-dp. The WI-CL-004 was used as a calibration guideline.

**Traceability.**

This certificate provides a traceability of The measurement to recognized the national standards, and to realization of the international system of units (SI) through the VSL (National Metrology Institute of Netherlands) via Certificate number: G2211901

**Uncertainty of Measurement:**

The reported uncertainty of measurement is based on the standard uncertainty multiplied by a coverage factor  $k=2$ , Which for a normal distribution corresponds to a coverage probability of approximately 95%. The standard uncertainty has been determined in accordance with the GUM 'Evaluation of measurement data - Guide to the expression of uncertainty in measurement'

**ENVIRONMENTAL CONDITIONS:**

Ambient condition in the laboratory are as follow:

Temperature	: $23.0 \pm 3.0$	°C
Relative Humidity	: $55.0 \pm 15.0$	%RH
Atmospheric Pressure	: $1010 \pm 10$	hPa

**CALIBRATION CONDITION:**

Preconditioning : 24 hours at ambient conditions.  
Measurement Condition : The average values during measurement are 23.8 °C and 54.3 %RH.

**NOTED:** The certificate is valid only to the item calibrated on date and place of calibration.

**TABULATION OF RESULTS:**

The table on next page give the measured values.

Calibrated by:

- ☒ Mr. Sorawit Thachalad  
☐ Miss Jittraporn Lertsomphol



Approved signatory: .....

Mr. Parinya Booncharoen  
Calibration Department Manager

**MEASUREMENT RESULTS:**

The Orifice gas flow device was calibrated by direct comparison method with the Standard Rotary Displacement Meter (Roots Meter). The Humid air was used as a medium in the system. The standard conditions are 25°C (298.15 K) and 760 mmHg for standard temperature and standard pressure respectively.

**Table 1:** The results of  $Q$  Standard calibration data

Plate	Flow rate $m^3/min$	Pressure [Pa] mmHg	Temperature [Ta] °C	Temperature [Tm] °C	$\Delta p_{meter}$ mmHg	$\Delta p_{Orifice}$ inH <sub>2</sub> O	$\gamma$	Standard Flow [ $Q_s$ ] $m^3/min$
1	0.700	754.191	23.89	23.40	50.276	1.674	1.291	0.651
2	1.005	754.148	23.80	23.70	54.969	3.395	1.839	0.929
3	1.118	754.084	23.88	23.81	37.664	4.407	2.095	1.058
4	1.175	754.076	23.87	23.79	27.625	5.018	2.236	1.127
5	1.420	754.047	23.89	23.81	27.348	7.362	2.708	1.363

Slope ( $m$ ): 1.99045  
 Intercept ( $b$ ): -0.00789  
 Correlation coefficient ( $r$ ): 0.99979  
 Uncertainty ( $k=2$ ): 0.015  $m^3/min$

**Table 2:** The results of  $Q$  actual calibration data

Plate	Flow rate $m^3/min$	Pressure [Pa] mmHg	Temperature [Ta] °C	Temperature [Tm] °C	$\Delta p_{meter}$ mmHg	$\Delta p_{Orifice}$ inH <sub>2</sub> O	$\gamma$	Standard Flow [ $Q_a$ ] $m^3/min$
1	0.700	754.191	23.89	23.40	50.276	1.674	0.812	0.654
2	1.005	754.148	23.80	23.70	54.969	3.395	1.156	0.932
3	1.118	754.084	23.88	23.81	37.664	4.407	1.318	1.062
4	1.175	754.076	23.87	23.79	27.625	5.018	1.406	1.132
5	1.420	754.047	23.89	23.81	27.348	7.362	1.703	1.368

Slope ( $m$ ): 1.24671  
 Intercept ( $b$ ): -0.00497  
 Correlation coefficient ( $r$ ): 0.99979  
 Uncertainty ( $k=2$ ): 0.015  $m^3/min$

\*\*\*End of Certificate of Calibration\*\*\*







Thai Environmental Technic Limited  
บริษัท เทคนิคสิ่งแวดล้อมไทย จำกัด

## High Volume TSP&PM-10 Calibration Report

Location : Thai Environmental Tech

Site ID : Bangkok

Date : 4-Jul-23

ITEM : TSP

Serial No : (No. 1 )

Calibrate By : Pipat

### Site Conditions

Barometric Pressure (mm Hg) : 760.00

Temperature (°C) : 25.0

Average Press. (mm Hg) : 750.6

Average Temp (°C) : 27.9

Corrected Pressure (mm Hg) : 760.0

Temperature (deg K) : 298.0

Corrected Average (mm Hg) : -

Average Temp: (Deg K) : -

### Calibration Orifice

Make : Tisch

Model : TE-5025A

Serial# : 0068

Qstd Slope : 2.01042

Qstd Intercept : -0.36590

Calibration Due Date : 21-Sep-23

### Calibration Information

Plate or Test #	ORIFICE (in H <sub>2</sub> O)	Qstd (m <sup>3</sup> /min)	Indicate (CFM)	IC (corrected)	Linear Regression Slope : 30.0216 Intercept : 0.2471 Corr. Coeff : 0.9893 # of Observations: 5
1	12.30	1.926	60.0	57.00	
2	9.80	1.739	54.0	52.00	
3	7.20	1.517	50.0	48.00	
4	5.00	1.294	40.0	40.00	
5	3.00	1.044	30.0	30.00	

### Calculations

$$Qstd = 1/m[\text{Sqrt}(H_2O(Pa/Pstd)(Tstd/Ta)) - b]$$

$$IC = I[\text{Sqrt}(Pa/Pstd)(Tstd/Ta)]$$

Qstd = standard flow rate

IC = corrected chart response

I = actual chart response

m = calibrator Qstd slope

b = calibrator Qstd intercept

Ta = actual temperature during calibration (deg K)

Pa = actual pressure during calibration (mm Hg)

Tstd = 298 deg K

Pstd = 760 mm Hg

For subsequent calculation of sampler flow:

$$1/m((I)[\text{Sqrt}(298/Tav)(Pav/760)] - b)$$

m = sampler slope

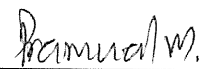
b = sampler intercept

I = chart response

Tav = daily average temperature

Pav = daily average pressure

Calibrate By : 

Approve By : 

**NOTE: Ensure calibration orifice has been certified within 12 months of use**







Thai Environmental Technic Limited  
บริษัท เทคนิคสิ่งแวดล้อมไทย จำกัด

## High Volume TSP&PM-10 Calibration Report

Location : Thai Environmental Tech

Site ID : Bangkok

Date : 4-Jul-23

ITEM : TSP

Serial No : (No. 4 )

Calibrate By : Pipat

### Site Conditions

Barometric Pressure (mm Hg) : 760.00

Temperature (°C) : 25.0

Average Press. (mm Hg) : 750.8

Average Temp (°C) : 29.2

Corrected Pressure (mm Hg) : 760.0

Temperature (deg K) : 298.0

Corrected Average (mm Hg) : -

Average Temp: (Deg K) : -

### Calibration Orifice

Make : Tisch

Model : TE-5025A

Serial# : 0068

Qstd Slope : 2.01042

Qstd Intercept : -0.36590

Calibration Due Date : 21-Sep-23

### Calibration Information

Plate or Test #	ORIFICE (in H <sub>2</sub> O)	Qstd (m <sup>3</sup> /min)	Indicate (CFM)	IC (corrected)	Linear Regression Slope : 30.0460 Intercept : 0.3184 Corr. Coeff : 0.9881 # of Observations: 5
1	12.50	1.941	60.0	57.00	
2	9.40	1.707	54.0	52.00	
3	7.20	1.517	50.0	48.00	
4	5.00	1.294	40.0	40.00	
5	3.00	1.044	30.0	30.00	

### Calculations

$$Qstd = 1/m[\text{Sqrt}(H_2O(P_a/P_{std})(T_{std}/T_a)) - b]$$

$$IC = I[\text{Sqrt}(P_a/P_{std})(T_{std}/T_a)]$$

Qstd = standard flow rate

IC = corrected chart response

I = actual chart response

m = calibrator Qstd slope

b = calibrator Qstd intercept

Ta = actual temperature during calibration (deg K)

Pa = actual pressure during calibration (mm Hg)

Tstd = 298 deg K

Pstd = 760 mm Hg

For subsequent calculation of sampler flow:

$$1/m((I)[\text{Sqrt}(298/T_{av})(P_{av}/760)] - b)$$

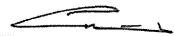
m = sampler slope

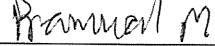
b = sampler intercept

I = chart response

Tav = daily average temperature

Pav = daily average pressure

Calibrate By : 

Approve By : 

**NOTE: Ensure calibration orifice has been certified within 12 months of use**





Thai Environmental Technic Limited  
บริษัท เทคนิคสิ่งแวดล้อมไทย จำกัด

## High Volume TSP&PM-10 Calibration Report

Location : Thai Environmental Tech

Site ID : Bangkok

Date : 5-Jul-23

ITEM : TSP

Serial No : (No. 13 )

Calibrate By : Pipat

### Site Conditions

Barometric Pressure (mm Hg) : 760.00  
Temperature (°C) : 25.0  
Average Press. (mm Hg) : 750.8  
Average Temp (°C) : 29.6

Corrected Pressure (mm Hg) : 760.0  
Temperature (deg K) : 298.0  
Corrected Average (mm Hg) : -  
Average Temp: (Deg K) : -

### Calibration Orifice

Make : Tisch  
Model : TE-5025A  
Serial# : 0068

Qstd Slope : 2.01042  
Qstd Intercept : -0.36590  
Calibration Due Date : 21-Sep-23

### Calibration Information

Plate or Test #	ORIFICE (in H <sub>2</sub> O)	Qstd (m <sup>3</sup> /min)	Indicate (CFM)	IC (corrected)	Linear Regression Slope : 28.4009 Intercept : 1.9182 Corr. Coeff : 0.9918 # of Observations: 5
1	13.00	1.975	60.0	57.00	
2	10.20	1.771	54.0	52.00	
3	7.80	1.571	50.0	48.00	
4	5.00	1.294	40.0	40.00	
5	3.00	1.044	30.0	30.00	

### Calculations

$$Qstd = 1/m[\text{Sqrt}(H_2O(P_a/P_{std})(T_{std}/T_a)) - b]$$

$$IC = I[\text{Sqrt}(P_a/P_{std})(T_{std}/T_a)]$$


Qstd = standard flow rate  
IC = corrected chart response  
I = actual chart response

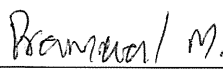
m = calibrator Qstd slope  
b = calibrator Qstd intercept  
Ta = actual temperature during calibration (deg K)  
Pa = actual pressure during calibration (mm Hg)  
Tstd = 298 deg K

Pstd = 760 mm Hg

For subsequent calculation of sampler flow:  
 $1/m((I)[\text{Sqrt}(298/T_{av})(P_{av}/760)] - b)$

m = sampler slope  
b = sampler intercept  
I = chart response  
Tav = daily average temperature  
Pav = daily average pressure

Calibrate By : 

Approve By : 

**NOTE: Ensure calibration orifice has been certified within 12 months of use**







Thai Environmental Technic Limited  
บริษัท เทคนิคสิ่งแวดล้อมไทย จำกัด

## High Volume TSP&PM-10 Calibration Report

Location : Thai Environmental Tech

Site ID : Bangkok

Date : 5-Jul-23

ITEM : TSP

Serial No : (No.18 )

Calibrate By : Pipat

### Site Conditions

Barometric Pressure (mm Hg) : 760.00

Temperature (°C) : 25.0

Average Press. (mm Hg) : 750.8

Average Temp (°C) : 29.6

Corrected Pressure (mm Hg) : 760.0

Temperature (deg K) : 298.0

Corrected Average (mm Hg) : -

Average Temp: (Deg K) : -

### Calibration Orifice

Make : Tisch

Qstd Slope : 2.01042

Model : TE-5025A

Qstd Intercept : -0.36590

Serial# : 0068

Calibration Due Date : 21-Sep-23

### Calibration Information

Plate or Test #	ORIFICE (in H <sub>2</sub> O)	Qstd (m <sup>3</sup> /min)	Indicate (CFM)	IC (corrected)	Linear Regression Slope : 30.0460 Intercept : 0.3184 Corr. Coeff : 0.9881 # of Observations: 5
1	12.50	1.941	60.0	57.00	
2	9.40	1.707	54.0	52.00	
3	7.20	1.517	50.0	48.00	
4	5.00	1.294	40.0	40.00	
5	3.00	1.044	30.0	30.00	

### Calculations

$$Qstd = 1/m[\text{Sqrt}(H_2O(P_a/P_{std})(T_{std}/T_a)) - b]$$

$$IC = I[\text{Sqrt}(P_a/P_{std})(T_{std}/T_a)]$$

Qstd = standard flow rate

IC = corrected chart response

I = actual chart response

m = calibrator Qstd slope

b = calibrator Qstd intercept

Ta = actual temperature during calibration (deg K)

Pa = actual pressure during calibration (mm Hg)

Tstd = 298 deg K

Pstd = 760 mm Hg

For subsequent calculation of sampler flow:

$$1/m((I)[\text{Sqrt}(298/T_{av})(P_{av}/760)] - b)$$

m = sampler slope

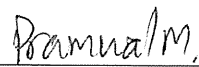
b = sampler intercept

I = chart response

Tav = daily average temperature

Pav = daily average pressure

Calibrate By : 

Approve By : 

**NOTE: Ensure calibration orifice has been certified within 12 months of use**





Thai Environmental Technic Limited  
บริษัท เทคนิคสิ่งแวดล้อมไทย จำกัด

## High Volume TSP&PM-10 Calibration Report

Location : Thai Environmental Tech

Site ID : Bangkok

Date : 4-Jul-23

ITEM : TSP

Serial No : (No. 25 )

Calibrate By : Pipat

### Site Conditions

Barometric Pressure (mm Hg) : 760.00

Temperature (°C) : 25.0

Average Press. (mm Hg) : 750.6

Average Temp (°C) : 28.4

Corrected Pressure (mm Hg) : 760.0

Temperature (deg K) : 298.0

Corrected Average (mm Hg) : -

Average Temp (Deg K) : -

### Calibration Orifice

Make : Tisch

Model : TE-5025A

Serial# : 0068

Qstd Slope : 2.01042

Qstd Intercept : -0.36590

Calibration Due Date : 21-Sep-23

### Calibration Information

Plate or Test #	ORIFICE (in H <sub>2</sub> O)	Qstd (m <sup>3</sup> /min)	Indicate (CFM)	IC (corrected)	Linear Regression Slope : 30.2297 Intercept : 0.1413 Corr. Coeff : 0.9875 # of Observations: 5
1	12.50	1.941	60.0	57.00	
2	9.20	1.691	54.0	52.00	
3	7.20	1.517	50.0	48.00	
4	5.00	1.294	40.0	40.00	
5	3.00	1.044	30.0	30.00	

### Calculations

$$Qstd = 1/m[\text{Sqrt}(H_2O(Pa/Pstd)(Tstd/Ta))-b]$$

$$IC = I[\text{Sqrt}(Pa/Pstd)(Tstd/Ta)]$$

Qstd = standard flow rate

IC = corrected chart response

I = actual chart response

m = calibrator Qstd slope

b = calibrator Qstd intercept

Ta = actual temperature during calibration (deg K)

Pa = actual pressure during calibration (mm Hg)

Tstd = 298 deg K

Pstd = 760 mm Hg

For subsequent calculation of sampler flow:

$$1/m((I)[\text{Sqrt}(298/Tav)(Pav/760)]-b)$$

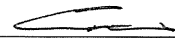
m = sampler slope

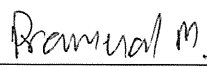
b = sampler intercept

I = chart response

Tav = daily average temperature

Pav = daily average pressure

Calibrate By : 

Approve By : 

**NOTE: Ensure calibration orifice has been certified within 12 months of use**







Thai Environmental Technic Limited  
บริษัท เทคนิคสิ่งแวดล้อมไทย จำกัด

## High Volume TSP&PM-10 Calibration Report

Location : Thai Environmental Tech

Site ID : Bangkok

Date : 13-Jul-23

ITEM : TSP

Serial No : (No.28 )

Calibrate By : Pipat

### Site Conditions

Barometric Pressure (mm Hg) : 760.00

Temperature (°C) : 25.0

Average Press. (mm Hg) : 750.8

Average Temp (°C) : 29.3

Corrected Pressure (mm Hg) : 760.0

Temperature (deg K) : 298.0

Corrected Average (mm Hg) : -

Average Temp: (Deg K) : -

### Calibration Orifice

Make : Tisch

Model : TE-5025A

Serial# : 0068

Qstd Slope : 2.01042

Qstd Intercept : -0.36590

Calibration Due Date : 21-Sep-23

### Calibration Information

Plate or Test #	ORIFICE (in H <sub>2</sub> O)	Qstd (m <sup>3</sup> /min)	Indicate (CFM)	IC (corrected)	Linear Regression Slope : 29.7887 Intercept : 0.7182 Corr. Coeff : 0.9857 # of Observations: 5
1	12.70	1.955	60.0	57.00	
2	9.20	1.691	54.0	52.00	
3	7.20	1.517	50.0	48.00	
4	5.00	1.294	40.0	40.00	
5	3.00	1.044	30.0	30.00	

### Calculations

$$Qstd = 1/m[\text{Sqrt}(H_2O(P_a/P_{std})(T_{std}/T_a))-b]$$

$$IC = I[\text{Sqrt}(P_a/P_{std})(T_{std}/T_a)]$$

Qstd = standard flow rate  
IC = corrected chart response  
I = actual chart response

m = calibrator Qstd slope  
b = calibrator Qstd intercept  
Ta = actual temperature during calibration (deg K)

Pa = actual pressure during calibration (mm Hg)

Tstd = 298 deg K

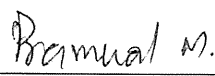
Pstd = 760 mm Hg

For subsequent calculation of sampler flow:

$$1/m((I)[\text{Sqrt}(298/T_{av})(P_{av}/760)]-b)$$

m = sampler slope  
b = sampler intercept  
I = chart response  
Tav = daily average temperature  
Pav = daily average pressure

Calibrate By : 

Approve By : 

**NOTE: Ensure calibration orifice has been certified within 12 months of use**





Thai Environmental Technic Limited  
บริษัท เทคนิคสิ่งแวดล้อมไทย จำกัด

## High Volume TSP&PM-10 Calibration Report

Location : Thai Environmental Tech

Site ID : Bangkok

Date : 5-Jul-23

ITEM : TSP

Serial No : (No. 39 )

Calibrate By : Pipat

### Site Conditions

Barometric Pressure (mm Hg) : 760.00

Temperature (°C) : 25.0

Average Press. (mm Hg) : 750.6

Average Temp (°C) : 28.9

Corrected Pressure (mm Hg) : 760.0

Temperature (deg K) : 298.0

Corrected Average (mm Hg) : -

Average Temp: (Deg K) : -

### Calibration Orifice

Make : Tisch

Model : TE-5025A

Serial# : 0068

Qstd Slope : 2.01042

Qstd Intercept : -0.36590

Calibration Due Date : 21-Sep-23

### Calibration Information

Plate or Test #	ORIFICE (in H <sub>2</sub> O)	Qstd (m <sup>3</sup> /min)	Indicate (CFM)	IC (corrected)	Linear Regression Slope : 29.4911 Intercept : 1.2335 Corr. Coeff : 0.9818 # of Observations: 5
1	12.80	1.962	60.0	57.00	
2	9.20	1.691	54.0	52.00	
3	7.00	1.498	50.0	48.00	
4	5.00	1.294	40.0	40.00	
5	3.00	1.044	30.0	30.00	

### Calculations

$$Qstd = 1/m[\text{Sqrt}(H_2O(Pa/Pstd)(Tstd/Ta))-b]$$

$$IC = I[\text{Sqrt}(Pa/Pstd)(Tstd/Ta)]$$

Qstd = standard flow rate

IC = corrected chart response

I = actual chart response

m = calibrator Qstd slope

b = calibrator Qstd intercept

Ta = actual temperature during calibration (deg K)

Pa = actual pressure during calibration (mm Hg)

Tstd = 298 deg K

Pstd = 760 mm Hg

For subsequent calculation of sampler flow:

$$1/m((I)[\text{Sqrt}(298/Tav)(Pav/760)]-b)$$

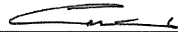
m = sampler slope


b = sampler intercept

I = chart response

Tav = daily average temperature

Pav = daily average pressure

Calibrate By : 

Approve By : 

**NOTE: Ensure calibration orifice has been certified within 12 months of use**







Thai Environmental Technic Limited  
บริษัท เทคนิคสิ่งแวดล้อมไทย จำกัด

## High Volume TSP&PM-10 Calibration Report

Location : Thai Environmental Tech

Site ID : Bangkok

Date : 4-Jul-23

ITEM : PM10

Serial No : (No. 11 )

Calibrate By : Pipat

### Site Conditions

Barometric Pressure (mm Hg) : 760.00

Temperature (°C) : 25.0

Average Press. (mm Hg) : 750.6

Average Temp (°C) : 28.2

Corrected Pressure (mm Hg) : 760.0

Temperature (deg K) : 298.0

Corrected Average (mm Hg) : -

Average Temp: (Deg K) : -

### Calibration Orifice

Make : Tisch

Qstd Slope : 2.01042

Model : TE-5025A

Qstd Intercept : -0.03659

Serial# : 0068

Calibration Due Date : 21-Sep-23

### Calibration Information

Plate or Test #	ORIFICE (in H <sub>2</sub> O)	Qstd (m <sup>3</sup> /min)	Indicate (CFM)	IC (corrected)	Linear Regression Slope : 35.0529 Intercept : 0.4420 Corr. Coeff : 0.9897 # of Observations: 5
1	12.00	1.741	60.0	60.00	
2	9.20	1.527	54.0	54.00	
3	7.00	1.334	50.0	50.00	
4	5.00	1.130	40.0	40.00	
5	3.00	0.880	30.0	30.00	

### Calculations

$$Qstd = 1/m[\text{Sqrt}(H_2O(Pa/Pstd)(Tstd/Ta)) - b]$$

$$IC = I[\text{Sqrt}(Pa/Pstd)(Tstd/Ta)]$$

Qstd = standard flow rate

IC = corrected chart response

I = actual chart response

m = calibrator Qstd slope

b = calibrator Qstd intercept

Ta = actual temperature during calibration (deg K)

Pa = actual pressure during calibration (mm Hg)

Tstd = 298 deg K

Pstd = 760 mm Hg

For subsequent calculation of sampler flow:

$$1/m((I)[\text{Sqrt}(298/Tav)(Pav/760)] - b)$$

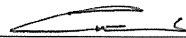
m = sampler slope

b = sampler intercept

I = chart response

Tav = daily average temperature

Pav = daily average pressure

Calibrate By : 

Approve By : 

**NOTE: Ensure calibration orifice has been certified within 12 months of use**





Thai Environmental Technic Limited  
บริษัท เทคนิคสิ่งแวดล้อมไทย จำกัด

## High Volume TSP&PM-10 Calibration Report

Location : Thai Environmental Tech

Site ID : Bangkok

Date : 5-Jul-23

ITEM : PM10

Serial No : (No. 18 )

Calibrate By : Pipat

### Site Conditions

Barometric Pressure (mm Hg) : 760.00

Temperature (°C) : 25.0

Average Press. (mm Hg) : 750.5

Average Temp (°C) : 28.5

Corrected Pressure (mm Hg) : 760.0

Temperature (deg K) : 298.0

Corrected Average (mm Hg) : -

Average Temp (Deg K) : -

### Calibration Orifice

Make : Tisch

Model : TE-5025A

Serial# : 0068

Qstd Slope : 2.01042

Qstd Intercept : -0.03659

Calibration Due Date : 21-Sep-23

### Calibration Information

Plate or Test #	ORIFICE (in H <sub>2</sub> O)	Qstd (m <sup>3</sup> /min)	Indicate (CFM)	IC (corrected)	Linear Regression Slope : 35.0529 Intercept : 0.4420 Corr. Coeff : 0.9897 # of Observations: 5
1	12.00	1.741	60.0	60.00	
2	9.20	1.527	54.0	54.00	
3	7.00	1.334	50.0	50.00	
4	5.00	1.130	40.0	40.00	
5	3.00	0.880	30.0	30.00	

### Calculations

$$Qstd = 1/m[\text{Sqrt}(H_2O(Pa/Pstd)(Tstd/Ta))-b]$$

$$IC = I[\text{Sqrt}(Pa/Pstd)(Tstd/Ta)]$$

Qstd = standard flow rate

IC = corrected chart response

I = actual chart response

m = calibrator Qstd slope

b = calibrator Qstd intercept

Ta = actual temperature during calibration (deg K)

Pa = actual pressure during calibration (mm Hg)

Tstd = 298 deg K

Pstd = 760 mm Hg

For subsequent calculation of sampler flow:

$$1/m((I)[\text{Sqrt}(298/Tav)(Pav/760)]-b)$$

m = sampler slope

b = sampler intercept

I = chart response

Tav = daily average temperature

Pav = daily average pressure

Calibrate By : 

Approve By : 

**NOTE: Ensure calibration orifice has been certified within 12 months of use**







Thai Environmental Technic Limited  
บริษัท เทคนิคสิ่งแวดล้อมไทย จำกัด

## High Volume TSP&PM-10 Calibration Report

Location : Thai Environmental Tech

Site ID : Bangkok

Date : 13-Jul-23

ITEM : PM10

Serial No : (No. 20 )

Calibrate By : Pipat

### Site Conditions

Barometric Pressure (mm Hg) : 760.00  
Temperature (°C) : 25.0  
Average Press. (mm Hg) : 750.6  
Average Temp (°C) : 29.3

Corrected Pressure (mm Hg) : 760.0  
Temperature (deg K) : 298.0  
Corrected Average (mm Hg) : -  
Average Temp (Deg K) : -

### Calibration Orifice

Make : Tisch  
Model : TE-5025A  
Serial# : 0068

Qstd Slope : 2.01042  
Qstd Intercept : -0.03659  
Calibration Due Date : 21-Sep-23

### Calibration Information

Plate or Test #	ORIFICE (in H <sub>2</sub> O)	Qstd (m <sup>3</sup> /min)	Indicate (CFM)	IC (corrected)	<b>Linear Regression</b> <b>Slope :</b> 34.6244 <b>Intercept :</b> 0.7804 <b>Corr. Coeff :</b> 0.9913 <b># of Observations:</b> 5
1	12.20	1.756	60.0	60.00	
2	9.20	1.527	54.0	54.00	
3	7.20	1.353	50.0	50.00	
4	5.00	1.130	40.0	40.00	
5	3.00	0.880	30.0	30.00	

### Calculations

$$Qstd = 1/m[\text{Sqrt}(H_2O(Pa/Pstd)(Tstd/Ta))-b]$$

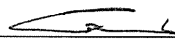
$$IC = I[\text{Sqrt}(Pa/Pstd)(Tstd/Ta)]$$

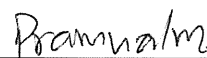
Qstd = standard flow rate  
IC = corrected chart response  
I = actual chart response

m = calibrator Qstd slope  
b = calibrator Qstd intercept  
Ta = actual temperature during calibration (deg K)  
Pa = actual pressure during calibration (mm Hg)  
Tstd = 298 deg K  
Pstd = 760 mm Hg

For subsequent calculation of sampler flow:  
 $1/m((I)[\text{Sqrt}(298/Tav)(Pav/760)]-b)$

m = sampler slope  
b = sampler intercept  
I = chart response  
Tav = daily average temperature  
Pav = daily average pressure

Calibrate By : 

Approve By : 

**NOTE: Ensure calibration orifice has been certified within 12 months of use**





Thai Environmental Technic Limited  
บริษัท เทคนิคสิ่งแวดล้อมไทย จำกัด

## High Volume TSP&PM-10 Calibration Report

Location : Thai Environmental Tech

Site ID : Bangkok

Date : 11-Jul-23

ITEM : PM10

Serial No : (No. 22 )

Calibrate By : Pipat

### Site Conditions

Barometric Pressure (mm Hg) : 760.00

Temperature (°C) : 25.0

Average Press. (mm Hg) : 750.6

Average Temp (°C) : 29.2

Corrected Pressure (mm Hg) : 760.0

Temperature (deg K) : 298.0

Corrected Average (mm Hg) : -

Average Temp (Deg K) : -

### Calibration Orifice

Make : Tisch

Model : TE-5025A

Serial# : 0068

Qstd Slope : 2.01042

Qstd Intercept : -0.03659

Calibration Due Date : 21-Sep-23

### Calibration Information

Plate or Test #	ORIFICE (in H <sub>2</sub> O)	Qstd (m <sup>3</sup> /min)	Indicate (CFM)	IC (corrected)	Linear Regression Slope : 35.0529 Intercept : 0.4420 Corr. Coeff : 0.9897 # of Observations: 5
1	12.00	1.741	60.0	60.00	
2	9.20	1.527	54.0	54.00	
3	7.00	1.334	50.0	50.00	
4	5.00	1.130	40.0	40.00	
5	3.00	0.880	30.0	30.00	

### Calculations

$$Qstd = 1/m[\text{Sqrt}(H_2O(Pa/Pstd)(Tstd/Ta)) - b]$$

$$IC = I[\text{Sqrt}(Pa/Pstd)(Tstd/Ta)]$$

Qstd = standard flow rate

IC = corrected chart response

I = actual chart response

m = calibrator Qstd slope

b = calibrator Qstd intercept

Ta = actual temperature during calibration (deg K)

Pa = actual pressure during calibration (mm Hg)

Tstd = 298 deg K

Pstd = 760 mm Hg

For subsequent calculation of sampler flow:

$$1/m((I)[\text{Sqrt}(298/Tav)(Pav/760)] - b)$$

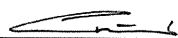
m = sampler slope

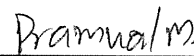
b = sampler intercept

I = chart response

Tav = daily average temperature

Pav = daily average pressure

Calibrate By : 

Approve By : 

**NOTE: Ensure calibration orifice has been certified within 12 months of use**





Thai Environmental Technic Limited  
บริษัท เทคนิคสิ่งแวดล้อมไทย จำกัด

## High Volume TSP&PM-10 Calibration Report

Location : Thai Environmental Tech

Site ID : Bangkok

Date : 11-Jul-23

ITEM : PM10

Serial No : (No. 26 )

Calibrate By : Pipat

### Site Conditions

Barometric Pressure (mm Hg) : 760.00

Temperature (°C) : 25.0

Average Press. (mm Hg) : 750.6

Average Temp (°C) : 28.7

Corrected Pressure (mm Hg) : 760.0

Temperature (deg K) : 298.0

Corrected Average (mm Hg) : -

Average Temp (Deg K) : -

### Calibration Orifice

Make : Tisch

Model : TE-5025A

Serial# : 0068

Qstd Slope : 2.01042

Qstd Intercept : -0.03659

Calibration Due Date : 21-Sep-23

### Calibration Information

Plate or Test #	ORIFICE (in H <sub>2</sub> O)	Qstd (m <sup>3</sup> /min)	Indicate (CFM)	IC (corrected)	Linear Regression Slope : 35.0529 Intercept : 0.4420 Corr. Coeff : 0.9897 # of Observations: 5
1	12.00	1.741	60.0	60.00	
2	9.20	1.527	54.0	54.00	
3	7.00	1.334	50.0	50.00	
4	5.00	1.130	40.0	40.00	
5	3.00	0.880	30.0	30.00	

### Calculations

$$Qstd = 1/m[\text{Sqrt}(H_2O(P_a/P_{std})(T_{std}/T_a)) - b]$$

$$IC = I[\text{Sqrt}(P_a/P_{std})(T_{std}/T_a)]$$

Qstd = standard flow rate

IC = corrected chart response

I = actual chart response

m = calibrator Qstd slope

b = calibrator Qstd intercept

Ta = actual temperature during calibration (deg K)

Pa = actual pressure during calibration (mm Hg)

Tstd = 298 deg K

Pstd = 760 mm Hg

For subsequent calculation of sampler flow:

$$1/m((I)[\text{Sqrt}(298/T_{av})(P_{av}/760)] - b)$$

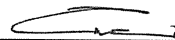
m = sampler slope

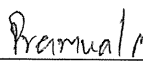
b = sampler intercept

I = chart response

Tav = daily average temperature

Pav = daily average pressure

Calibrate By : 

Approve By : 

**NOTE: Ensure calibration orifice has been certified within 12 months of use**







Thai Environmental Technic Limited  
บริษัท เทคนิคสิ่งแวดล้อมไทย จำกัด

## High Volume TSP&PM-10 Calibration Report

Location : Thai Environmental Tech

Site ID : Bangkok

Date : 13-Jul-23

ITEM : PM10

Serial No : (No. 27 )

Calibrate By : Pipat

### Site Conditions

Barometric Pressure (mm Hg) : 760.00

Temperature (°C) : 25.0

Average Press. (mm Hg) : 750.2

Average Temp (°C) : 29.2

Corrected Pressure (mm Hg) : 760.0

Temperature (deg K) : 298.0

Corrected Average (mm Hg) : -

Average Temp (Deg K) : -

### Calibration Orifice

Make : Tisch

Model : TE-5025A

Serial# : 0068

Qstd Slope : 2.01042

Qstd Intercept : -0.03659

Calibration Due Date : 21-Sep-23

### Calibration Information

Plate or Test #	ORIFICE (in H <sub>2</sub> O)	Qstd (m <sup>3</sup> /min)	Indicate (CFM)	IC (corrected)	Linear Regression Slope : 35.4756 Intercept : 0.2616 Corr. Coeff : 0.9907 # of Observations: 5
1	11.80	1.727	60.0	60.00	
2	9.00	1.510	54.0	54.00	
3	7.00	1.334	50.0	50.00	
4	4.80	1.108	40.0	40.00	
5	3.00	0.880	30.0	30.00	

### Calculations

$$Qstd = 1/m[\text{Sqrt}(H_2O(Pa/Pstd)(Tstd/Ta)) - b]$$

$$IC = I[\text{Sqrt}(Pa/Pstd)(Tstd/Ta)]$$

Qstd = standard flow rate

IC = corrected chart response

I = actual chart response

m = calibrator Qstd slope

b = calibrator Qstd intercept

Ta = actual temperature during calibration (deg K)

Pa = actual pressure during calibration (mm Hg)

Tstd = 298 deg K

Pstd = 760 mm Hg

For subsequent calculation of sampler flow:

$$1/m((I)[\text{Sqrt}(298/Tav)(Pav/760)] - b)$$

m = sampler slope

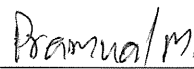
b = sampler intercept

I = chart response

Tav = daily average temperature

Pav = daily average pressure

Calibrate By : 

Approve By : 

**NOTE: Ensure calibration orifice has been certified within 12 months of use**





Thai Environmental Technic Limited  
บริษัท เทคนิคสิ่งแวดล้อมไทย จำกัด

## High Volume TSP&PM-10 Calibration Report

Location : Thai Environmental Tech

Site ID : Bangkok

Date : 5-Jul-23

ITEM : PM10

Serial No : (No. 29)

Calibrate By : Pipat

### Site Conditions

Barometric Pressure (mm Hg) : 760.00

Temperature (°C) : 25.0

Average Press. (mm Hg) : 750.6

Average Temp (°C) : 28.7

Corrected Pressure (mm Hg) : 760.0

Temperature (deg K) : 298.0

Corrected Average (mm Hg) : -

Average Temp: (Deg K) : -

### Calibration Orifice

Make : Tisch

Qstd Slope : 2.01042

Model : TE-5025A

Qstd Intercept : -0.03659

Serial# : 0068

Calibration Due Date : 21-Sep-23

### Calibration Information

Plate or Test #	ORIFICE (in H <sub>2</sub> O)	Qstd (m <sup>3</sup> /min)	Indicate (CFM)	IC (corrected)	Linear Regression Slope : 34.1794 Intercept : 1.0242 Corr. Coeff : 0.9939 # of Observations: 5
1	12.20	1.756	60.0	60.00	
2	9.60	1.559	54.0	54.00	
3	7.40	1.371	50.0	50.00	
4	5.00	1.130	40.0	40.00	
5	3.00	0.880	30.0	30.00	

### Calculations

$$Qstd = 1/m[\text{Sqrt}(H_2O(Pa/Pstd)(Tstd/Ta))-b]$$

$$IC = I[\text{Sqrt}(Pa/Pstd)(Tstd/Ta)]$$

Qstd = standard flow rate

IC = corrected chart response

I = actual chart response

m = calibrator Qstd slope

b = calibrator Qstd intercept

Ta = actual temperature during calibration (deg K)

Pa = actual pressure during calibration (mm Hg)

Tstd = 298 deg K

Pstd = 760 mm Hg

For subsequent calculation of sampler flow:

$$1/m((I[\text{Sqrt}(298/Tav)(Pav/760)]-b)$$

m = sampler slope


b = sampler intercept

I = chart response

Tav = daily average temperature

Pav = daily average pressure

Calibrate By : 

Approve By : 

**NOTE: Ensure calibration orifice has been certified within 12 months of use**





TECHNOLOGY PROMOTION ASSOCIATION (THAILAND-JAPAN)  
CORPORATE SERVICES 3: EQUIPMENT CALIBRATION AND TESTING SERVICES  
534/4 PATTANAKARN ROAD SOI 18, SUANLUANG, SUANLUANG BANGKOK 10250  
TEL. 0-2717-3000-29 FAX. 0-2719-9484



Cert.No.: 23MM160  
Page.: 1 of 3

## Certificate of Calibration

**Equipment :** Electronic Balance

**Manufacturer :** Mettler Toledo

**Model :** AB204

**Serial No. :** 1116392227


**ID No. :** TET.LAB.BAL01

**Submitted by :** Thai Environmental Technic Limited  
1/6 Soi Ramkhamhaeng 145,  
Khwaeng/Khet Saphan Sung,  
Bangkok 10240

**Location :** Balance Room

**Received order :** 10 April 2023  
**Calibration Date :** 11 April 2023  
**Ambient Temperature :** 15 °C to 40 °C  
**Relative Humidity :** 30 % to 90 %

**Calibrated by :** Khit Ruttanaprapachai

**Approved by :**   
Approved Signatory

( ) Pornthippa Tameyakul  
( ☒ ) Malee Butkruea  
( ) Suwit Imjai

**Issue Date :** 25 April 2023

The Uncertainties are for a confidence probability of approximately 95%

This certificate may not be reproduced other than in full, except with the prior written  
Approval of the head of Corporate Services 3 : Equipment Calibration and Testing Services.

A 0053464



**Equipment :** Electronic Balance  
**Condition As-Received :** Used Item  
**Reference :** 2304-0146OC-12  
**Procedure used :-**

**Cert.No.:** 23MM160  
**Page:** 2 of 3

Calibration were conducted using in-house calibration procedure CP-OB01 according to direct measurement method against standard weight.

**Condition of this result of calibration**

**1. Reference standard instruments:-**

<u>Instruments</u>	<u>Model</u>	<u>Serial No.</u>	<u>ID No.</u>	<u>Test report No.</u>	<u>Due date</u>
1) Standard Weight Set (E2)	15884	24053	70RC007	MM-0010-22	20 Jan 2024

2. This certificate is valid only to the item calibrated on date and place of calibration.
3. This result of calibration was made on requested at the point specified by customer.
4. This certificate is not certified for any commercial transaction.
5. This certification is traceable to the International System of Unit.

**Result of calibration** ( ) Without Adjustment ( \* ) After Adjustment by External Calibration

**Range capacity :** 0 g to 210 g **Resolution** 0.0001 g

**Before Adjustment :**

<u>Applied Weight</u>	<u>Balance Reading</u>	<u>Correction</u>	<u>Measurement Uncertainty</u>	<u>Coverage Factor</u>
( g )	( g )	( g )	( ± mg )	( k )
100	99.9982	+0.0018	0.18	2.00
200	199.9965	+0.0035	0.29	2.00

**After Adjustment :**

**1. Determination of the standard deviation of weighing machine** ( n = 10 )

<u>Applied Weight</u>	<u>Standard Deviation of Reading ( g )</u>
( g )	
100	0.00007
200	0.00007

Malu :



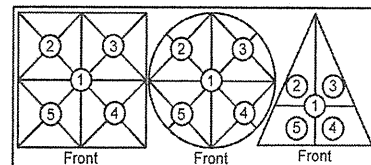
Equipment : Electronic Balance  
Condition As-Received : Used Item  
Reference : 2304-0146OC-12  
Result of calibration

Cert.No.: 23MM160

Page: 3 of 3

## 2. Effect of off center loading

A mass of 100 g was placed at various positions on the pan.  
The weighing machine reading error obtained is given in the table



Maximum difference between  
off-center and central loading  
(g)  
0.0001

Position 1	Position 2	Position 3	Position 4	Position 5
(g)	(g)	(g)	(g)	(g)
-0.0002	-0.0002	-0.0003	-0.0003	-0.0002

## 3. Departure from nominal value

Applied Weight	Balance Reading	Correction	Measurement Uncertainty	Coverage Factor
(g)	(g)	(g)	( $\pm$ mg)	(k)
Unload	0.0000	0.0000	0.14	2.11
0.01	0.0100	0.0000	0.14	2.11
0.1	0.1001	-0.0001	0.14	2.11
0.5	0.5000	0.0000	0.14	2.11
1	1.0001	-0.0001	0.14	2.11
5	5.0000	0.0000	0.14	2.11
10	9.9999	+0.0001	0.14	2.11
25	24.9998	+0.0002	0.15	2.07
50	49.9998	+0.0002	0.16	2.05
100	99.9999	+0.0001	0.18	2.00
200	200.0000	0.0000	0.29	2.00

The reported uncertainty of measurement was based on a standard uncertainty multiplied by a coverage factor  $k$ , providing a level of confidence of approximately 95 %.

-o0o-

Malu.







TECHNOLOGY PROMOTION ASSOCIATION (THAILAND-JAPAN)  
CORPORATE SERVICES 3: EQUIPMENT CALIBRATION AND TESTING SERVICES  
534/4 PATTANAKARN ROAD SOI 18, SUANLUANG, SUANLUANG BANGKOK 10250  
TEL. 0-2717-3000-29 FAX. 0-2719-9484



Cert.No.: 22CHO626/1

Page.: 1 of 2

## Certificate of Calibration

This Certificate was issued to replace to the Certificate No.22CH626

Equipment : pH Meter

Manufacturer : Horiba

Model : F-71G

Serial No. : V3B1F8H3

ID No. : -

Condition As-Received: Used Item

Received Date : 01 November 2022

Calibration Date : 01 November 2022

Reference : 2211-0001OC-8

Submitted by : Thai Environmental Technic Limited  
1/6 Soi Ramkhamhaeng 145,  
Khwaeng/Khet Saphan Sung,  
Bangkok 10240

Calibration Place : Laboratory (Thai Environment Technic Limited)

Ambient Temperature : (24.9 - 26.5) °C

Relative Humidity : (59 - 43) %

Calibration Procedure : In - house method :

- CP-OCH2 by direct measurement with standard  
voltage calibrator and direct measurement  
with certified reference material (CRM)

Calibrated by : Uthen Kankawi

Approved by :

*Warakorn,*

Approved Signatory

( ) Malee Butkruea

( ) Saithip Meangmai

(✓) Warakorn Lernagatrakul

Issue Date : 2 March 2023

The Uncertainties are for a confidence probability of approximately 95%

This certificate may not be reproduced other than in full, except with the prior written

Approval of the head of Corporate Services 3 : Equipment Calibration and Testing Services.



Cert. No.: 22CHO626/1

Page.: 2 of 2

**Condition of this calibration result**

## 1. Reference Standard Instrument : -

<u>Instrument</u>	<u>Serial No.</u>	<u>ID No.</u>	<u>Cert. No.</u>	<u>Due Date</u>
1) Document Process Calibrator	46530031	130RC098	22E3313	06 Oct 2023
2) Digital Thermometer	-	130RC017	22T777	20 Apr 2023

This certification is traceable to the International System of Unit maintained at:-

- Traceable to National Institute of Metrology (Thailand), NIMT

2. Certified Reference Materials : The measurement results are traceable to SI through CPA chem Ltd.,  
ANSI-ASQ National Accreditation Board, Accredited No. AR-1835

<u>Buffer Solution</u>	<u>Manufacturer</u>	<u>Lot No.</u>	<u>Exp. date</u>
pH 4.008	CPA chem	823320	20 June 2024
pH 6.865	CPA chem	788996	01 Jan 2024
pH 9.181	CPA chem	794123	14 Feb 2023

## 3. This certificate is valid only to the item calibrated on date and place of calibration.

**Calibration Results****Function : mV Measurement****Performing standard curve by Fluke at pH (4,7,10)**

Unit Under Calibration	Nominal Value	Standard Voltage Input	Actual Reading		Uncertainty of Measurement ( $\pm$ mV)	Coverage factor $k$
	pH	mV	mV	pH		
pH Meter S/N.: V3B1F8H3	4.000	177.48	177.5	4.000	0.058	2.00
	6.860	8.28	8.3	6.860	0.058	2.00
	7.000	0.00	0.0	7.000	0.058	2.00
	9.180	-128.97	-128.9	9.180	0.058	2.00
	10.000	-177.48	-177.4	10.000	0.058	2.00

**Function : pH Measurement****Performing three buffers standard curve by using buffer nominal pH (4,7,9)**

Unit Under Calibration	Standard pH Buffer Solution	Actual pH Reading	Actual mV Reading (mV)	Uncertainty of pH measurement ( $\pm$ )	Coverage factor $k$
pH Electrode S/N.: 9X2E0223	4.008	4.012	163.9	0.0047	2.00
	6.865	6.870	-5.6	0.0085	2.00
	9.181	9.182	-140.2	0.014	2.00

The reported uncertainty of measurement was based on a standard uncertainty multiplied by a coverage factor  $k$ , providing a level of confidence of approximately 95 %.

-oOo-

Warakorn

a 1149783



TECHNOLOGY PROMOTION ASSOCIATION (THAILAND-JAPAN)  
CORPORATE SERVICES 3: EQUIPMENT CALIBRATION AND TESTING SERVICES  
534/4 PATTANAKARN ROAD SOI 18, SUANLUANG, SUANLUANG BANGKOK 10250  
TEL. 0-2717-3000-27 FAX. 0-2719-9484



Cert.No.: 22CHO625

Page.: 1 of 3

## Certificate of Calibration

**Equipment :** Spectrophotometer  
**Manufacturer :** PerkinElmer  
**Model :** Lambda 365  
**Serial No. :** 365K9042909  
**ID No. :** -  
**Condition As-Received:** Used Item  
**Received Date :** 01 November 2022  
**Calibration Date :** 01 November 2022  
**Reference :** 2211-0001OC-5  
**Submitted by :** Thai Environmental Technic Limited  
1/6 Soi Ramkhamhaeng 145,  
Khwaeng/Khet Saphan Sung,  
Bangkok 10240  
  
**Calibration Place :** Laboratory (Thai Environment Technic Limited)  
**Ambient Temperature :** ( 24.9 - 24.4 ) °C (On-Site)  
**Relative Humidity :** ( 54 - 52 ) % (On-Site)  
**Calibration Procedure :** In - house method :  
CP-OCH4 based on ASTM E 275-01

**Calibrated by :** Uthen Kankawi

**Approved by :**

*Malee*

Approved Signatory

- ( ☒ ) Malee Butkruea  
( ☐ ) Saithip Meangmai  
( ☐ ) Warakorn Lernagatrakul

**Issue Date :** 10 November 2022  
**The Uncertainties are for a confidence probability of approximately 95%**

This certificate may not be reproduced other than in full, except with the prior written  
Approval of the head of Corporate Services 3 : Equipment Calibration and Testing Services.

A 0047052



Cert. No. : 22CHO625

Page : 2 of 3

**Condition of calibration result**

1. Reference Standard Material :

<u>Material</u>	<u>Serial No.</u>	<u>Certificate No.</u>	<u>Due date</u>
1. Absorbance Standard set	39130	106269	10 Oct 2024
2. Wavelength Standard set	29829	94776	02 Sep 2023
3. Wavelength Standard set	29829	94777	02 Sep 2023
4. Stray Light Standard set	32629	9112980	03 Aug 2024

2. This certificate is valid only to the item calibrated on date and place of calibration.

3. This certificate is traceable to the International System of Unit maintained at :

- National Physical Laboratory (NPL), The United Kingdom of Great Britain and Northern Ireland
- National Institute of Standards and Technology (NIST), The United States of America

4. Spectral BandWidth : 1 nm  
Scan Speed : 30 nm/min

**Calibration Results : without adjustment**

**Wavelength Accuracy**

<b>Certified Values of Reference Material ( nm )</b>	<b>UUC Reading ( nm )</b>	<b>Uncertainty of Measurement ( <math>\pm</math> nm )</b>	<b>Coverage Factor <i>k</i></b>
418.53	418.32	0.12	2.00
536.52	536.61	0.12	2.00
638.00	637.96	0.12	2.00
684.50	684.48	0.12	2.00
879.41	879.39	0.12	2.00

*Malu*

a 1134411



Cert. No. : 22CHO625

Page : 3 of 3

**Calibration Results : without adjustment****Photometric Accuracy**

Wavelength (nm)	Certified Values of Reference Material ( Abs )	UUC Reading ( Abs )	Uncertainty of Measurement ( $\pm$ Abs )	Coverage Factor $k$
420.0	Zero	0.0000	0.0028	2.00
	0.5796	0.5788	0.0028	2.00
	0.7105	0.7095	0.0028	2.00
	1.0186	1.0179	0.0028	2.00
546.1	Zero	0.0000	0.0028	2.00
	0.5281	0.5258	0.0028	2.00
	0.6962	0.6945	0.0028	2.00
	0.9984	0.9956	0.0028	2.00
635.0	Zero	0.0000	0.0028	2.00
	0.5699	0.5684	0.0028	2.00
	0.7606	0.7590	0.0028	2.00
	1.0927	1.0904	0.0028	2.00

**Stray Light**

* Straylight at 280.05 nm $\pm$ 0.11 nm	Reading at 280.05 nm $\pm$ 0.11 nm
Abs	2.0728
%T	0.8299

**Remark**

- Each individual filter is measured against the empty filter holder (blank) used to zero the spectrophotometer
- Cut-off wavelength of stray light reference material (Potassium Iodide) at wavelength 280.05 nm  $\pm$  0.11 nm
- Result = Pass, If Absorbance > 2.00 Abs and Transmission < 1.0 %T at Wavelength 280.05 nm  $\pm$  0.11 nm
- \* : Not NSC-ONSC Accredited

The reported uncertainty of measurement was based on a standard uncertainty multiplied by a coverage factor  $k$ , providing a level of confidence of approximately 95 %.

-o0o-

Maler.

a 1134410



## MAINTENANCE REPORT AND TEST CERTIFICATE OPTIMA 8000

<b>Customer :</b> บริษัท เทคนิคสิ่งแวดล้อมไทย จำกัด <b>Address :</b> 1/6 ซอยรามคำแหง 145 แขวงสะพานสูง เขตสะพานสูง กรุงเทพมหานคร 10240 <b>User Name:</b> Khun Nattapong <b>Phone:</b> 02-3737799 <b>Fax:</b>	<b>Date Tested:</b> April 3, 2023 <b>Recommendation Recertification</b> <b>Period</b> 6 <b>Months</b> <b>Recertification Due:</b> October 3, 2023 <b>Date Last Certified:</b> October 4, 2022 <b>Visit Number:</b> 1 of 2 <b>PerkinElmer Phone:</b> 02-719-6420 ext 203 <b>PerkinElmer Fax:</b> 02-318-5597
--	--

CONFIGURATION TESTED		ACCESSORIES/COMPONENT NOT INCLUDED
<b>MODEL</b>	<b>SERIAL NUMBER</b>	
OPTIMA 8000	078N1310024C	
S10		
<b>TESTED EQUIPMENT</b>	<b>CALIBRATION NUMBER</b>	<b>EXPIRATION</b>
IPV Methods		
<b>TEST STANDARD USED</b>	<b>PART NUMBER</b>	<b>EXPIRATION DATE</b>
Mixed standard 1/10	N069-1579	May 30, 2023
Mixed standard 1/100	N930-0221	November 30, 2023
<b>CUSTOMER SUPPLIED</b>	<b>COMMENTS</b>	<b>CUSTOMER INITIALS</b>
2 % HNO3		
10 % HNO3		

## MAINTENANCE REPORT AND TEST CERTIFICATE OPTIMA 8000

SERIAL NUMBER : 078N1310024C

DATE TESTED : April 3, 2023

### 1. MECHANICAL CHECKS

- A. Inspect and clean all fans and filters.
- B. Inspect and replace as necessary, all torch components including the RF coil.
- C. Inspect all tubing for sign of clacking or leaking.
- D. Adjust water and gas pressure regulator settings.
- E. Inspect and leak check pneumatics drawers.
- F. Clean the exterior of the instrument.

OK

OK

OK

OK

OK

OK

### 2. OPTICAL CHECKS

- A. Inspect and clean all optical components.
- B. As required, check and replace all purgefilters.
- C. Recheck optical alignment.

OK

OK

OK

### 3. COOLING SYSTEM CHECKS

- A. Perform preventive maintenance on chiller.
- B. Flush out the chiller every six months.

OK

OK

### 4. PERFORMANCE CHECKS

- A. Torch View Alignment.
- B. Wavelength Calibration.

OK

OK



## MAINTENANCE REPORT AND TEST CERTIFICATE OPTIMA 8000

<b>SERIAL NUMBER :</b> 078N1310024C		<b>DATE TESTED :</b> April 3, 2023	
PARAMETER	SPECIFICATION		FINAL VALUE
<b>Spectral Resolution : UV</b>	As 193.696 nm	≤ 0.009	0.00702
	Ni 231.604 nm	≤ 0.011	0.00790
	Ni 341.476 nm	≤ 0.015	0.01192
<b>Spectral Resolution : VIS</b>	Ba 455.403 nm	≤ 0.020	0.01500
<b>Precision</b>			
	Zn 206.200 nm	% RSD < 1.0	0.58
	Mg 280.271 nm	% RSD < 1.0	0.28
	Mg 285.213 nm	% RSD < 1.0	0.39
	Ba 455.403 nm	% RSD < 1.0	0.39
<b>Detection Limits : Axial</b>	As 193.696 nm	3(SD) ppb	4.26
	Se 196.026 nm	3(SD) ppb	2.87
	Tl 190.801 nm	3(SD) ppb	3.73
	Pb 220.353 nm	3(SD) ppb	11.48
<b>Detection Limits : Radial</b>	As 193.696 nm	3(SD) ppb	2.60
	Zn 213.857 nm	3(SD) ppb	0.26
	Mn 257.610 nm	3(SD) ppb	1.49
	La 379.478 nm	3(SD) ppb	0.12
	Ba 455.403 nm	3(SD) ppb	2.86
	Ba 493.408 nm	3(SD) ppb	9.64
<b>BEC : Axial (IB X 1000)/(IS-IB)</b>	Mn 257.610 nm	≤ 30 ppb	15.70
<b>BEC : Radial (IB X 1000)/(IS-IB)</b>	Mn 257.610 nm	≤ 30 ppb	23.89

**MAINTENANCE REPORT AND TEST CERTIFICATE**  
**OPTIMA 8000**

**SERIAL NUMBER :** 078N1310024C

**DATE TESTED :** April 3, 2023

**Remarks :**

Commissioning follow as commissioning performance sheets.

---

---

---

---

---

---

---

---

This is to certify that the above tests have been performed and the configuration tested



meets



does not meet

the PerkinElmer Specifications listed on this certificate.

This certificate does not modify PerkinElmer's standard terms and condition of sale,  
including warranty terms.

**Service Department ~~PerkinElmer~~ Ltd.**

**Authorized Representative :**



(  Wiphan Promlumda )

Service Engineer

=====

Align View XY Axial for analyte Mn 257.610

X-position	Y-position	Intensity
-2.0	15.0	2920926.2
-1.6	15.0	4117205.6
-1.2	15.0	5581541.7
-0.8	15.0	6990827.7
-0.4	15.0	8176328.5
0.0	15.0	9075098.4
0.4	15.0	8960265.5
0.8	15.0	8360445.5
1.2	15.0	7467099.0
1.6	15.0	6255831.1
2.0	15.0	5030853.2
0.0	10.0	159365.9
0.0	10.5	241214.9
0.0	11.0	446309.1
0.0	11.5	964275.3
0.0	12.0	1659518.8
0.0	12.5	2781326.3
0.0	13.0	4117574.4
0.0	13.5	5863526.6
0.0	14.0	7007618.7
0.0	14.5	8248882.5
0.0	15.0	8915353.6
0.0	15.5	8830206.3
0.0	16.0	8476274.2
0.0	16.5	7574239.7
0.0	17.0	5916533.5
0.0	17.5	4806692.1
0.0	18.0	3470213.6
0.0	18.5	2459999.5
0.0	19.0	1409798.3
0.0	19.5	836888.1
0.0	20.0	457127.2
-0.8	15.0	7399406.7
-0.4	15.0	8255530.6
0.0	15.0	8767341.7
0.4	15.0	8902714.8
0.8	15.0	8341631.7
0.4	13.0	4448485.6
0.4	13.5	5980471.5
0.4	14.0	7305087.4
0.4	14.5	8079824.9
0.4	15.0	9038053.5
0.4	15.5	8965644.2
0.4	16.0	8519954.3
0.4	16.5	7478375.8
0.4	17.0	5956440.9

-----

3/4/2566 10:51:07 aligned for analyte Mn 257.610

X viewing position set to 0.4 mm having Peak intensity 9038053.5 for Axial viewing

Y viewing position set to 15.0 mm having Peak intensity 9038053.5 for Axial viewing

=====

Align View X Radial for analyte Mn 257.610

X-position	Y-position	Intensity
-7.0	15.0	23032.5
-6.5	15.0	27006.7
-6.0	15.0	35560.5
-5.5	15.0	57821.4
-5.0	15.0	90935.9
-4.5	15.0	136105.4
-4.0	15.0	206645.2
-3.5	15.0	299882.1
-3.0	15.0	428877.1
-2.5	15.0	589771.2
-2.0	15.0	706184.3
-1.5	15.0	841150.2
-1.0	15.0	1019788.8
-0.5	15.0	1329407.6
0.0	15.0	1381151.1
0.5	15.0	1426400.1
1.0	15.0	1309824.4

1.5	15.0	1099234.2
2.0	15.0	784376.5
2.5	15.0	574061.3
3.0	15.0	437455.8
3.5	15.0	324105.7
4.0	15.0	264022.3
4.5	15.0	183005.6
5.0	15.0	117089.3
5.5	15.0	70743.1
6.0	15.0	40927.8
6.5	15.0	27379.1
7.0	15.0	20863.3

-----  
3/4/2566 10:54:00 aligned for analyte Mn 257.610

X viewing position set to 0.5 mm having Peak intensity 1426400.1 for Radial viewing  
=====

## Method Loaded

Method Name: DLRL-Cal

Method Last Saved: 5/4/2565 10:59:28

IEC File:

MSF File:

Method Description: C8000-Calibration for later test

Sequence No.: 1

Sample ID: Calib Blank 1

Analyst:

Logged In Analyst (Original) : TET

Initial Sample Wt:

Dilution:

Wash Time:

Autosampler Location:

Date Collected: 3/4/2566 11:18:12

Data Type: Reprocessed on 3/4/2566 11:32:52

Initial Sample Vol:

Sample Prep Vol:

## Nebulizer Parameters: Calib Blank 1

Analyte	Back Pressure	Flow
All	197.0 kPa	0.50 L/min

## Mean Data: Calib Blank 1

Analyte	Mean Corrected Intensity	Std.Dev.	RSD	Calib Conc. Units
As 193.696	96.5			[0.00] mg/L
Zn 213.857	584.3			[0.00] mg/L
Mn 257.610	1401.8			[0.00] mg/L
La 379.478	352.7			[0.00] mg/L
Ba 455.403	25802.4			[0.00] mg/L
Ba 493.408	45750.3			[0.00] mg/L

Sequence No.: 2

Sample ID: Calib Std 1

Analyst:

Logged In Analyst (Original) : TET

Initial Sample Wt:

Dilution:

Wash Time:

Autosampler Location:

Date Collected: 3/4/2566 10:55:27

Data Type: Reprocessed on 3/4/2566 11:32:52

Initial Sample Vol:

Sample Prep Vol:

## Nebulizer Parameters: Calib Std 1

Analyte	Back Pressure	Flow
All	194.0 kPa	0.50 L/min

## Mean Data: Calib Std 1

Analyte	Mean Corrected Intensity	Std.Dev.	RSD	Calib Conc. Units
As 193.696	13655.9			[5.0] mg/L
Zn 213.857	149844.9			[1.0] mg/L
Mn 257.610	1615840.4			[1.0] mg/L
La 379.478	340770.3			[1.0] mg/L
Ba 455.403	839940.7			[0.1] mg/L
Ba 493.408	633243.6			[0.1] mg/L

## Calibration Summary

Analyte	Stds.	Equation	Intercept	Slope	Curvature	Corr. Coef.	Reslope
As 193.696	1	Lin, Calc Int	0.0	2731	0.00000	1.000000	
Zn 213.857	1	Lin, Calc Int	0.0	149800	0.00000	1.000000	
Mn 257.610	1	Lin, Calc Int	0.0	1616000	0.00000	1.000000	
La 379.478	1	Lin, Calc Int	0.0	340800	0.00000	1.000000	
Ba 455.403	1	Lin, Calc Int	0.0	8399000	0.00000	1.000000	
Ba 493.408	1	Lin, Calc Int	0.0	6332000	0.00000	1.000000	

Sequence No.: 3

Sample ID: IDL-RL (2% HNO3)

Analyst:

Logged In Analyst (Original) : TET

Initial Sample Wt:

Autosampler Location:

Date Collected: 3/4/2566 11:19:52

Data Type: Reprocessed on 3/4/2566 11:32:52

Initial Sample Vol:

Dilution: 3X

Sample Prep Vol:

Wash Time:

-----  
Nebulizer Parameters: IDL-RL (2% HNO3)

Analyte	Back Pressure	Flow
All	198.0 kPa	0.50 L/min

-----  
Mean Data: IDL-RL (2% HNO3)

Analyte	Mean Corrected Intensity	Calib. Conc. Units	Std.Dev.	Sample Conc. Units	Std.Dev.	RSD
As 193.696	-32.0	-0.0 mg/L	0.00	-35.2 µg/L	2.60	7.40%
Zn 213.857	37.4	0.0 mg/L	0.00	0.7 µg/L	0.26	35.07%
Mn 257.610	475.9	0.0 mg/L	0.00	0.9 µg/L	1.49	168.85%
La 379.478	-36.3	-0.0 mg/L	0.00	-0.3 µg/L	1.12	350.55%
Ba 455.403	26579.4	0.0 mg/L	0.00	9.5 µg/L	2.86	30.09%
Ba 493.408	-20698.9	-0.0 mg/L	0.00	-9.8 µg/L	9.64	98.34%

## =====

Reprocessing Begun  
Logged In Analyst: TET

Technique: ICP Continuous

Results Data Set (original): PM3APR23

Results Library (original): C:\Users\Public\PerkinElmer\IPV\Results.mdb

Results Data Set (reprocessed):

Results Library (reprocessed):

=====

Sequence No.: 1  
Sample ID: Calib Blank 1

Analyst:

Logged In Analyst (Original) : TET

Initial Sample Wt:

Dilution:

Wash Time:

Autosampler Location:

Date Collected: 3/4/2566 11:23:46

Data Type: Reprocessed on 3/4/2566 11:32:04

Initial Sample Vol:

Sample Prep Vol:

-----

Nebulizer Parameters: Calib Blank 1

Analyte	Back Pressure	Flow
All	198.0 kPa	0.50 L/min

-----

Mean Data: Calib Blank 1

Analyte	Mean Corrected Intensity	Std.Dev.	RSD	Calib Conc. Units
Tl 190.801	-113.3			[0.00] µg/L
As 193.696	285.4			[0.00] µg/L
Se 196.026	99.6			[0.00] µg/L
Pb 220.353	1176.2			[0.00] µg/L

=====

Sequence No.: 2

Sample ID: DL-Standard

Analyst:

Logged In Analyst (Original) : TET

Initial Sample Wt:

Dilution:

Wash Time:

Autosampler Location:

Date Collected: 3/4/2566 11:29:24

Data Type: Reprocessed on 3/4/2566 11:32:04

Initial Sample Vol:

Sample Prep Vol:

-----

Nebulizer Parameters: DL-Standard

Analyte	Back Pressure	Flow
All	199.0 kPa	0.50 L/min

-----

Mean Data: DL-Standard

Analyte	Mean Corrected Intensity	Std.Dev.	RSD	Calib Conc. Units
Tl 190.801	19454.6			[1000] µg/L
As 193.696	17563.5			[1000] µg/L
Se 196.026	4574.6			[500] µg/L
Pb 220.353	31327.5			[500] µg/L

## -----

## Calibration Summary

Analyte	Stds.	Equation	Intercept	Slope	Curvature	Corr. Coef.	Reslope
Tl 190.801	1	Lin, Calc Int	0.0	19.45	0.00000	1.000000	
As 193.696	1	Lin, Calc Int	-0.0	17.56	0.00000	1.000000	
Se 196.026	1	Lin, Calc Int	0.0	9.149	0.00000	1.000000	
Pb 220.353	1	Lin, Calc Int	0.0	62.65	0.00000	1.000000	

=====

Sequence No.: 3

Sample ID: IDL-XL (2% HNO3)

Analyst:

Logged In Analyst (Original) : TET

Initial Sample Wt:

Dilution: 3X

Wash Time:

Autosampler Location:

Date Collected: 3/4/2566 11:25:37

Data Type: Reprocessed on 3/4/2566 11:32:04

Initial Sample Vol:

Sample Prep Vol:

-----  
Nebulizer Parameters: IDL-XL (2% HNO3)

Analyte	Back Pressure	Flow
All	198.0 kPa	0.50 L/min

-----  
Mean Data: IDL-XL (2% HNO3)

Analyte	Mean Corrected Intensity	Calib. Conc. Units	Std.Dev.	Sample Conc. Units	Std.Dev.	RSD
Tl 190.801	35.1	2 µg/L	1.24	5 µg/L	3.73	68.95%
As 193.696	-14.0	-1 µg/L	1.42	-2 µg/L	4.26	177.97%
Se 196.026	-6.5	-1 µg/L	0.96	-2 µg/L	2.87	134.85%
Pb 220.353	-135.0	-2 µg/L	3.83	-6 µg/L	11.48	177.50%



=====  
Method Loaded

Method Name: MnBEC

Method Last Saved: 15/10/2563 10:51:07

IEC File:

MSF File:

Method Description: C8000-XL and RL-Spec <or = 30 µg/L,Attn:Spec<or= 50µg/L  
=====

Sequence No.: 1

Autosampler Location:

Sample ID: IB (2% HNO3)

Date Collected: 3/4/2566 11:17:14

Analyst:

Data Type: Reprocessed on 3/4/2566 11:32:27

Logged In Analyst (Original) : TET

Initial Sample Wt:

Initial Sample Vol:

Dilution:

Sample Prep Vol:

Wash Time:  
-----

Nebulizer Parameters: IB (2% HNO3)

Analyte

Back Pressure

Flow

All

197.0 kPa

0.50 L/min  
-----

Mean Data: IB (2% HNO3)

Analyte	Mean Corrected Intensity	Calib. Conc. Units	Std.Dev.	Sample Conc. Units	Std.Dev.	RSD
Mn 257 XN	185358.1					
Mn 257 RN	39181.6					

  
=====

Sequence No.: 2

Autosampler Location:

Sample ID: IS (N069-1579/10)

Date Collected: 3/4/2566 10:57:10

Analyst:

Data Type: Reprocessed on 3/4/2566 11:32:27

Logged In Analyst (Original) : TET

Initial Sample Wt:

Initial Sample Vol:

Dilution:

Sample Prep Vol:

Wash Time:  
-----

Nebulizer Parameters: IS (N069-1579/10)

Analyte

Back Pressure

Flow

All

194.0 kPa

0.50 L/min  
-----

Mean Data: IS (N069-1579/10)

Analyte	Mean Corrected Intensity	Calib. Conc. Units	Std.Dev.	Sample Conc. Units	Std.Dev.	RSD
Mn 257 XN	11636268.0					
Mn 257 RN	1679271.0					

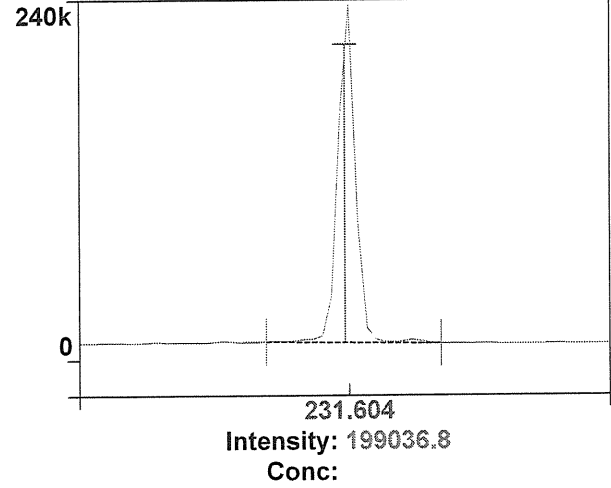
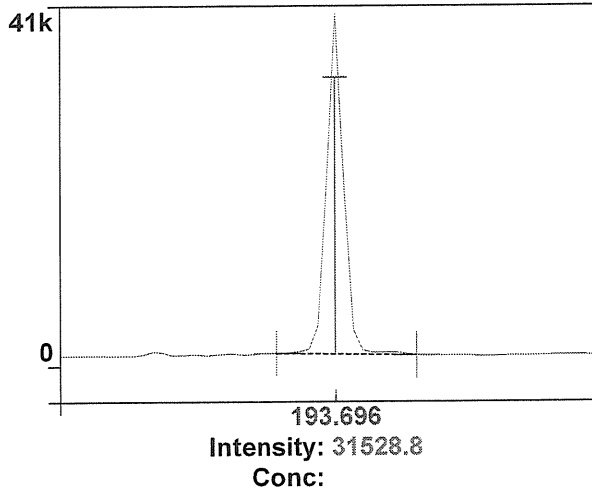
Analysis

R 10:59:16.638	04/03/2023	ID: Res	(N069-1579/10)	AS 193.696-Res	Rep 1	Res: 0.00701 nm
R 10:59:23.206	04/03/2023	ID: Res	(N069-1579/10)	AS 193.696-Res	Rep 2	Res: 0.00702 nm
R 10:59:29.648	04/03/2023	ID: Res	(N069-1579/10)	AS 193.696-Res	Rep 3	Res: 0.00702 nm
R 10:59:38.634	04/03/2023	ID: Res	(N069-1579/10)	Ni 231.604-Res	Rep 1	Res: 0.00789 nm
R 10:59:44.937	04/03/2023	ID: Res	(N069-1579/10)	Ni 231.604-Res	Rep 2	Res: 0.00790 nm
R 10:59:51.130	04/03/2023	ID: Res	(N069-1579/10)	Ni 231.604-Res	Rep 3	Res: 0.00790 nm
R 11:00:00.443	04/03/2023	ID: Res	(N069-1579/10)	Ni 341.476-Res	Rep 1	Res: 0.01192 nm
R 11:00:07.822	04/03/2023	ID: Res	(N069-1579/10)	Ni 341.476-Res	Rep 2	Res: 0.01188 nm
R 11:00:15.138	04/03/2023	ID: Res	(N069-1579/10)	Ni 341.476-Res	Rep 3	Res: 0.01169 nm
R 11:00:27.681	04/03/2023	ID: Res	(N069-1579/10)	Ba 455.403-Res	Rep 1	Res: 0.01499 nm
R 11:00:37.103	04/03/2023	ID: Res	(N069-1579/10)	Ba 455.403-Res	Rep 2	Res: 0.01495 nm
R 11:00:46.448	04/03/2023	ID: Res	(N069-1579/10)	Ba 455.403-Res	Rep 3	Res: 0.01500 nm

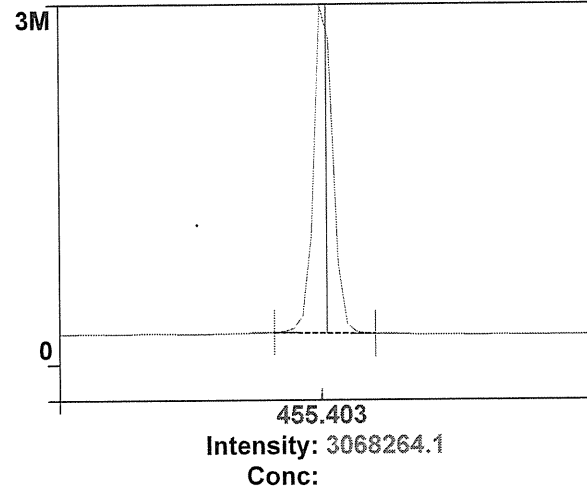
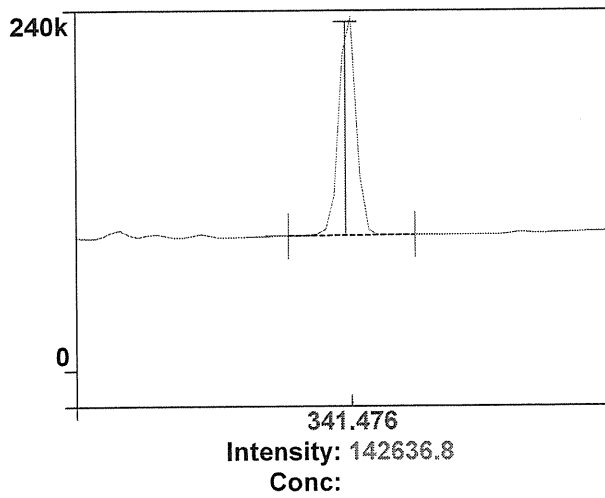
As 193.696-Res

Rep: 3 Ni 231.604-Res

Rep: 3

1  
Ni 341.476-ResRep: 3 2  
Ba 455.403-Res

Rep: 3



3

4

=====  
Method Loaded

Method Name: Precision

IEC File:

Method Description: C8000 -N=10- 1.0% RSD

Method Last Saved: 3/5/2554 12:31:51

MSF File:

=====  
Sequence No.: 4

Sample ID: RSD STD (N069-1579/10)

Analyst:

Initial Sample Wt:

Dilution:

Wash Time:

Autosampler Location:

Date Collected: 3/4/2566 11:02:43

Data Type: Original

Initial Sample Vol:

Sample Prep Vol:

-----  
Nebulizer Parameters: RSD STD (N069-1579/10)

Analyte

Back Pressure

Flow

All

195.0 kPa

0.50 L/min

-----  
Mean Data: RSD STD (N069-1579/10)

Analyte	Mean Corrected Intensity	Calib. Conc. Units	Std.Dev.	Sample Conc. Units	Std.Dev.	RSD
Zn 206.200	493474.3				17093.12	3.46%
Mg 280.271	3275340.1				23266.88	0.71%
Mg 285.213	196113.7				11109.46	5.66%
Ba 455.403	7794526.3				80474.48	1.03%

=====  
Method Loaded

Method Name: Precision

IEC File:

Method Description: C8000 -N=10- 1.0% RSD

Method Last Saved: 3/4/2566 11:07:51

MSF File:

=====  
Sequence No.: 5

Sample ID: RSD STD (N069-1579/10)

Analyst:

Initial Sample Wt:

Dilution:

Wash Time:

Autosampler Location:

Date Collected: 3/4/2566 11:08:51

Data Type: Original

Initial Sample Vol:

Sample Prep Vol:

-----  
Nebulizer Parameters: RSD STD (N069-1579/10)

Analyte

Back Pressure

Flow

All

196.0 kPa

0.50 L/min

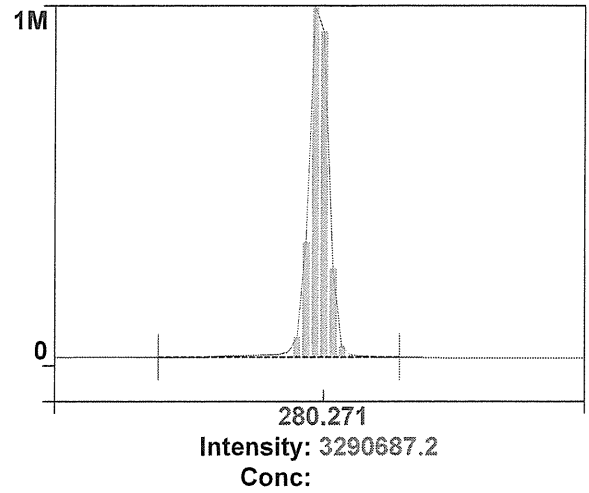
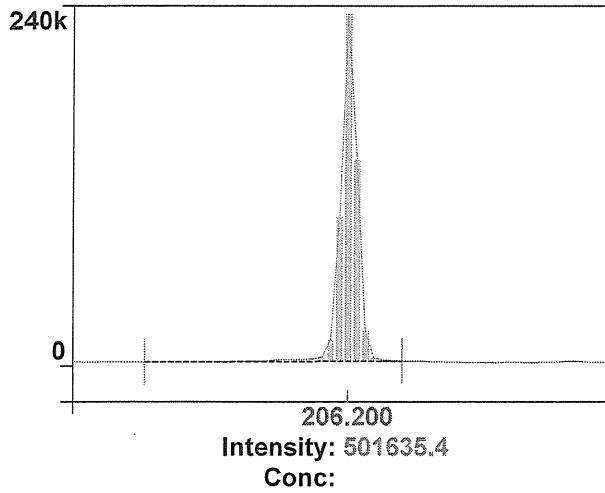
-----  
Mean Data: RSD STD (N069-1579/10)

Analyte	Mean Corrected Intensity	Calib. Conc. Units	Std.Dev.	Sample Conc. Units	Std.Dev.	RSD
Zn 206.200	515663.2				2890.08	0.56%
Mg 280.271	3404809.8				43469.63	0.28%
Mg 285.213	197460.0				775.34	0.39%
Ba 455.403	8071203.3				31631.19	0.39%

Zn 206.200

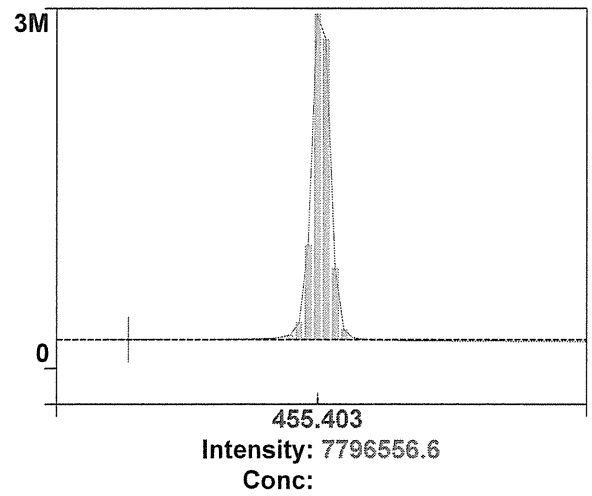
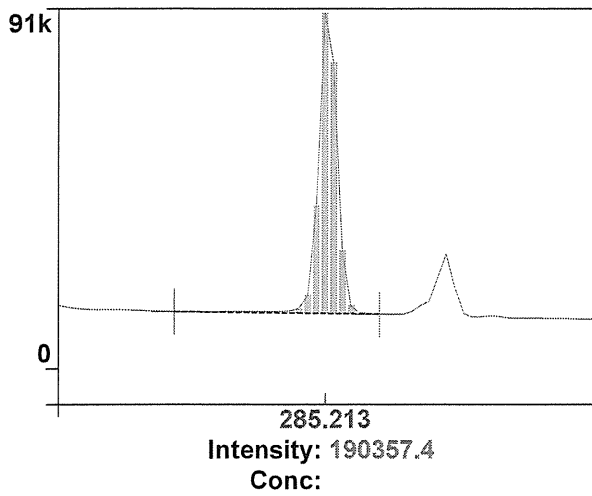
Rep: 5 | Mg 280.271

Rep: 5

1  
Mg 285.213

Rep: 5 | Ba 455.403

Rep: 1



# PerkinElmer TruQ

Atomic Spectroscopy Standard



## Certificate of Analysis

PerkinElmer Number: N0691579  
Description: Multi-Element Standard  
Matrix: 2% HNO<sub>3</sub>  
Lot Number: 57-024CRX1

Certification Date: NOV - - 2021  
Expiration Date: MAY 30 2023

### \* Instrumental Analysis using ICP Spectrometer:

Analyte	Labeled	Measured	SRM	Analyte	Labeled	Measured	SRM
As	50.0 µg/mL	50.1 µg/mL	3103a*	Ni	10.0 µg/mL	10.0 µg/mL	3136*
K	50.0 µg/mL	50.3 µg/mL	3141a*	Sr	10.0 µg/mL	10.0 µg/mL	3153a*
La	10.0 µg/mL	10.0 µg/mL	3127a*	Zn	10.0 µg/mL	10.0 µg/mL	3168a*
Li	10.0 µg/mL	10.0 µg/mL	3129a*	Ba	1.00 µg/mL	1.01 µg/mL	3104a*
Mn	10.0 µg/mL	10.1 µg/mL	3132*	Mg	1.00 µg/mL	1.01 µg/mL	3131a*

\* - indicates NIST SRM

† - indicates CRM (when NIST SRM is not available)

Reference Multi: Lot# 2-84MJ, 3-168MJ, 4-39MJ

Refer to side 2 for details of certification.

Balances are calibrated with weight sets traceable to NIST.

We guarantee that our PerkinElmer TruQ Atomic Spectroscopy Standards are stable and accurate to  $\pm 0.5\%$  of certified concentration until the expiration date, provided the standards are kept tightly capped and stored under normal laboratory conditions. This value is the sum of cumulative errors associated with the analytical determinations, pipetting, and diluting to final volume. For these solutions we use high purity acids, ASTM Type I water (18 megohm double deionized), and leached, triple-rinsed bottles. All glassware used is class A.



Certifying Officer:

Y. Parikh

PerkinElmer®

PerkinElmer, Inc.

U.S.A. Tel: 1-203-925-4600

U.S.A. Toll Free: 1-800-762-4000

Visit [www.perkinelmer.com/lasoffices](http://www.perkinelmer.com/lasoffices) for a complete listing of our global offices.



# PerkinElmer TruQ

Atomic Spectroscopy Standard

## Certificate of Analysis

PerkinElmer Number: N9300221

Description: Instrument Calibration Standard 4

Matrix: 5% HNO<sub>3</sub>

Lot Number: 58-169CRY1

Certification Date: MAY - - 2022

Expiration Date: NOV 30 2023

### \* Instrumental Analysis using ICP Spectrometer:

Analyte	Labeled	Measured	SRM	Analyte	Labeled	Measured	SRM
As	100 µg/mL	99.8 µg/mL	3103a*	Pb	50.0 µg/mL	49.9 µg/mL	3128*
Tl	100 µg/mL	99.4 µg/mL	3158*	Se	50.0 µg/mL	49.8 µg/mL	3149*
Cd	50.0 µg/mL	50.0 µg/mL	3108*				

\* - indicates NIST SRM

† - indicates CRM (when NIST SRM is not available)

Reference Multi: Lot# 57-156CR, 1-177YJ, 54-134CR

Refer to side 2 for details of certification.

Balances are calibrated with weight sets traceable to NIST.

We guarantee that our PerkinElmer TruQ Atomic Spectroscopy Standards are stable and accurate to  $\pm 0.5\%$  of certified concentration until the expiration date, provided the standards are kept tightly capped and stored under normal laboratory conditions. This value is the sum of cumulative errors associated with the analytical determinations, pipetting, and diluting to final volume. For these solutions we use high purity acids, ASTM Type I water (18 megohm double deionized), and leached, triple-rinsed bottles. All glassware used is class A.



Certifying Officer:

Y. Parikh

PerkinElmer®

PerkinElmer, Inc.

U.S.A. Tel: 1-203-925-4600

U.S.A. Toll Free: 1-800-762-4000

Visit [www.perkinelmer.com/lasoffices](http://www.perkinelmer.com/lasoffices) for a complete listing of our global offices.



**Global Service Training Department**

**Service Engineer Certification**

---

**Wiphan Promlumda**

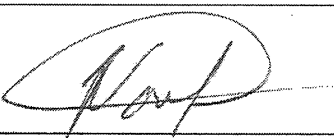
---

**This is to certify that the above mentioned  
PerkinElmer representative has been trained to  
service the instrument indicated below:**

**ICP220B Optima 8300 & Optima 4X/5X/7X00 Series**

---

**Instructor:**

  
**Geoff Cook**

**Date: July 20, 2012**

**Certified by:**   
**(Manager, Global Training Operations)**





TECHNOLOGY PROMOTION ASSOCIATION (THAILAND-JAPAN)  
CALIBRATION AND TESTING EQUIPMENT SERVICES

534/4 PATTANAKARN ROAD SOI 18, SUANLUANG, SUANLUANG BANGKOK 10250

TEL. 0-2717-3000-24 FAX. 0-2719-9484

Cert.No.: 22CH1490

Page.: 1 of 2

## Certificate of Calibration

Equipment :	Turbidity Meter
Manufacturer :	Thermo Scientific
Model :	EUTECH TN-100
Serial No. :	2655003
ID. No. :	-
Condition As-Received:	Used Item
Received Date :	27 October 2022
Calibration Date :	31 October 2022
Reference :	2210-0875WSC-3
Submitted by :	Thai Environmental Technic Limited 1/6 Soi Ramkhamhaeng 145, Khwaeng/Khet Saphan Sung, Bangkok 10240
Ambient Temperature :	(25 ± 2.5) °C
Relative Humidity :	(50 ± 20) %
Calibration Procedure :	In - house method : CP-CH11 based on direct measurement by using Formazin standard solution
Calibrated by :	Walalak Sirithean
Approved by :	 Approved Signatory
( <input checked="" type="checkbox"/> ) Malee Butkruea	
( <input type="checkbox"/> ) Saithip Meangmai	
( <input type="checkbox"/> ) Warakorn Lerngagtrakul	
Issue Date :	1 November 2022

The Uncertainties are for a confidence probability of approximately 95%.

This certificate may not be reproduced other than in full, except with the prior written approval of the head of Calibration and Testing Equipment Services.

A 0009939



Cert.No. : 22CH1490

Page. : 2 of 2

**Condition of this calibration result**

**1. Reference Standard Instruments :**

This certification is traceable to the International System of unit (SI unit) through Technology Promotion Association (Thailand-Japan).

<u>Instruments</u>	<u>Serial No.</u>	<u>ID No.</u>	<u>Certificate No.</u>	<u>Due date</u>
1) Thermo-Hygrograph	1103328	130EC010	22H1313	12 June 2023
2) Electronic Balance	B134206712	140RC007	22MM181	22 Feb 2023

**2. Standard Material : The Formazin suspension has been prepared gravimetric from**

<u>Material</u>	<u>Manufacturer</u>	<u>Lot No.</u>	<u>Assay</u>
1) Hexamethylenetetramine	HIMEDIA	0000493947	99.65%
2) Hydrazinium Sulfate	HIMEDIA	0000522014	99.40%

**3. This certificate is valid only to the item calibrated on date and place of calibration.**

**Calibration result**

**Performing three - Formazin suspension standard curve by using 20,100,800 NTU  
Turbidity Meter Serial Number : 2655003**

<b>Standard Formazine suspension ( NTU )</b>	<b>UUC* Reading ( NTU )</b>	<b>Uncertainty of Measurement ( ± NTU )</b>	<b>Coverage Factor <i>k</i></b>
0.1	0.18	0.026	2.06
20	20.1	0.39	2.00
100	100	0.74	2.00
800	799	2.1	2.00

**Remark**

- UUC\* = Unit Under Calibration
- NTU = Nephelometric Turbidity Units

The reported uncertainty of measurement was based on a standard uncertainty multiplied by a coverage factor *k*, providing a level of confidence of approximately 95 %.

-o0o-

*Mali*

**a 1133333**

THAILAND INSTITUTE OF SCIENTIFIC AND TECHNOLOGICAL RESEARCH (TISTR)

Request No. 21-66/0197

MTC No. EEL. BP. 60/0166

## CALIBRATION CERTIFICATE

Submitted by : THAI ENVIRONMENTAL TECHNIC LIMITED.

Address : 1/6 Soi Ramkhamhaeng 145, Khwaeng/Khet Saphansung, Bangkok 10240.

Calibrated at : Electrical and Electronic Standards Laboratory, Industrial Metrology and Testing Service Centre.  
: Soi 1C, Bangpoo Industrial Estate, Sukhumvit Rd., Muang, Samutprakan 10280.

### Instrument Calibrated :

Description : Sound Calibrator

Manufacturer : Tenmars

Model : TM-100

Serial No. : 181203570

### Ambient Environment

Temperature :  $(23 \pm 3) ^\circ\text{C}$

Relative Humidity :  $(50 \pm 15) \%$

Ambient Pressure :  $(101.325 \pm 1.500) \text{ kPa}$

- Standards used :
1. Digital Function Synthesizer NF Electronic DF-193A S/N 122037.
  2. Measuring Amplifier Bruel&Kjaer 2636 S/N 1537484.
  3. Programmable Attenuator Tamagawa TPA-303A S/N OF 2214.
  4. Digital Multimeter Agilent 34401A S/N MY44005560.
  5. Pressure Transmitter Vaisala PTB202AD S/N T0650001.
  6. Audio Analyzer Keithley 2015-P S/N 4106495.
  7. Condenser Microphone Bruel&Kjaer 4180 S/N 2889871.

**Calibration Procedure:** CP-102-04 based on IEC 60942-2003. The sound pressure level of instrument was measured by standard microphone using an insert voltage technique.

This instrument has been calibrated against standards maintained at Electrical and Electronic Standards Laboratory (EEL), which are traceable to the International System of Units through the National Institute of Metrology (Thailand).

The information on actual reading is attached herewith and the uncertainty limits quoted refer to the measured values only.

Date of Receipt : 10 Jan. 2023

Date of Calibration : 16 Jan. 2023

1 / 3

The results relate only to the items tested/calibrated or value assigned.

Advertising the Report/Certificate and publicity of the results except in full are prohibited unless written permission is obtained from the governor of TISTR.

FM.BL.MTC.002 Rev.4

Head Office  
35 Mu 3 Tambon Khlong Ha, Amphoe Khlong Luang,  
Changwat Pathumthani 12120, Thailand  
Tel. (66) 0 2577 9000  
Fax. (66) 0 2577 9009  
E-mail : rumpai@tistr.or.th Website:www.tistr.or.th

Office/Laboratory  
Soi 1C, Bangpoo Industrial Estate, Sukhumvit Road,  
Amphoe Muang, Changwat Samutprakan 10280, Thailand  
Tel. (66) 0 2323 1672-80 ext. 115, 116  
Fax. (66) 0 2323 9165  
E-mail : mtc@tistr.or.th

Office  
196 Phahonyothin Road, Chatuchak, Bangkok 10900,  
Thailand  
Tel. (66) 0 2579 1121-30 ext. 5219, 5225, 5217  
Fax. (66) 0 2579 8592  
E-mail : sumalee@tistr.or.th

THAILAND INSTITUTE OF SCIENTIFIC AND TECHNOLOGICAL RESEARCH (TISTR)

**Request No.** 21-66/0197

**MTC No.** EEL. BP. 60/0166

The reported expanded uncertainty is based upon a standard uncertainty multiplied by a coverage factor  $k = 2$ , providing a level of confidence of approximately 95%.

**Nominal Output of Unit Under Test = 94 dB re 20 $\mu$ Pa at 1000 Hz**

**Acoustic Output in dB re 20 $\mu$ Pa , Corrected to Reference Conditions : 101.325 kPa , 23.0°C and 50 %RH**

**1. Sound Pressure Level**

Standard Microphone Type	Measured Sound Pressure Level (dB)	Deviated value (dB)	Uncertainty (dB)	Tolerance limit IEC60942:2003 Class 2
1/2 inch Bruel&Kjaer 4180	94.26	0.26	$\pm 0.10$	$\pm 0.75$ dB

**2. Frequency**

Standard Microphone Type	Measured Frequency (Hz)	Deviated value (Hz)	Uncertainty (Hz)	Tolerance limit IEC60942:2003 Class 2
1/2 inch Bruel&Kjaer 4180	989.3	-10.7	$\pm 1.5$	$\pm 2.0\%$

**3. Total distortion**

Standard Microphone Type	Measured Total distortion (%)	Uncertainty (%)	Tolerance limit IEC60942:2003 Class 2
1/2 inch Bruel&Kjaer 4180	2.20	$\pm 0.50$	$\pm 4.0\%$

**Note :** 1. No adjustment.

2. The calibrator pressure correction was not included.

3. The microphone volume correction was not included.

**Date of Calibration** : 16 Jan. 2023

2 / 3

The results relate only to the items tested/calibrated or value assigned.

Advertising the Report/Certificate and publicity of the results except in full are prohibited unless written permission is obtained from the governor of TISTR.

FM.BL.MTC.002 Rev.4

**Head Office**

35 Mu 3 Tambon Khlong Ha, Amphoe Khlong Luang,  
Changwat Pathumthani 12120, Thailand  
Tel. (66) 0 2577 9000  
Fax. (66) 0 2577 9009  
E-mail : rumpai@tistr.or.th Website:www.tistr.or.th

**Office/Laboratory**

Soi 1C, Bangpoo Industrial Estate, Sukhumvit Road,  
Amphoe Muang, Changwat Samutprakan 10280, Thailand  
Tel. (66) 0 2323 1672-80 ext. 115, 116  
Fax. (66) 0 2323 9165  
E-mail : mtc@tistr.or.th

**Office**

196 Phahonyothin Road, Chatuchak, Bangkok 10900,  
Thailand  
Tel. (66) 0 2579 1121-30 ext. 5219, 5225, 5217  
Fax. (66) 0 2579 8592  
E-mail : surmalee@tistr.or.th

THAILAND INSTITUTE OF SCIENTIFIC AND TECHNOLOGICAL RESEARCH (TISTR)

Request No. 21-66/0197

MTC No. EEL. BP. 60/0166

Nominal Output of Unit Under Test = 114 dB re 20 $\mu$ Pa at 1000 Hz

Acoustic Output in dB re 20 $\mu$ Pa , Corrected to Reference Conditions : 101.325 kPa , 23.0 °C and 50 %RH

### 1. Sound Pressure Level

Standard Microphone Type	Measured Sound Pressure Level (dB)	Deviated value (dB)	Uncertainty (dB)	Tolerance limit IEC60942:2003 Class 2
1/2 inch Bruel&Kjaer 4180	113.96	-0.04	$\pm 0.10$	$\pm 0.75$ dB

### 2. Frequency

Standard Microphone Type	Measured Frequency (Hz)	Deviated value (Hz)	Uncertainty (Hz)	Tolerance limit IEC60942:2003 Class 2
1/2 inch Bruel&Kjaer 4180	985.1	-14.9	$\pm 1.5$	$\pm 2.0\%$

### 3. Total Distortion

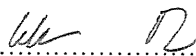
Standard Microphone Type	Measured Total Distortion (%)	Uncertainty (%)	Tolerance limit IEC60942:2003 Class 2
1/2 inch Bruel&Kjaer 4180	2.60	$\pm 0.60$	$\pm 4.0\%$

Note : 1. No adjustment.


2. The calibrator pressure correction was not included.

3. The microphone volume correction was not included.

Calibrated by :

  
.....  
(Mr. Weerachai Deechaiyae)

Approved by :

  
.....  
(Mr. Prawate Kluaypa)

Director

Electrical and Electronic Standards Laboratory

Industrial Metrology and Testing Service Centre

Date of Calibration : 16 Jan. 2023

Date of Issue : 18 Jan. 2023

Ref : 2011266011000062001

End of Certificate

3 / 3

The results relate only to the items tested/calibrated or value assigned.

Advertising the Report/Certificate and publicity of the results except in full are prohibited unless written permission is obtained from the governor of TISTR.

FM.BL.MTC.002 Rev.4

#### Head Office

35 Mu 3 Tambon Khlong Ha, Amphoe Khlong Luang,  
Changwat Pathumthani 12120, Thailand  
Tel. (66) 0 2577 9000  
Fax. (66) 0 2577 9009  
E-mail : rumpai@tistr.or.th Website:www.tistr.or.th

#### Office/Laboratory

Soi 1C, Bangpoo Industrial Estate, Sukhumvit Road,  
Amphoe Muang, Changwat Samutprakan 10280, Thailand  
Tel. (66) 0 2323 1672-80 ext. 115, 116  
Fax. (66) 0 2323 9165  
E-mail : mtc@tistr.or.th

#### Office

196 Phahonyothin Road, Chatuchak, Bangkok 10900,  
Thailand  
Tel. (66) 0 2579 1121-30 ext. 5219, 5225, 5217  
Fax. (66) 0 2579 8592  
E-mail : sumalee@tistr.or.th






Thai Environmental Technic Limited  
บริษัท เทคนิคสิ่งแวดล้อมไทย จำกัด

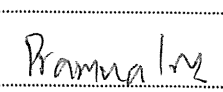
## Sound Level Meter Calibration Report

Equipment Type : Sound Level Meter  
Calibrator : TENMARS Sound Calibrator TM-100  
Standard : IEC 60942  
Accuracy : 94.0 ±0.3 dB and 114.0 ±0.5 dB  
Frequency : at 1,000 Hz ±1%  
Calibrator Serial NO. : 181203570

Calibration Date : 24-Sep-2023  
Barometric pressure (mmHg) : 759.0 mmHg  
Temperature (23±3)°C : 25.60 °C  
Relative Humidity(50±15 %) : 50.0 % RH  
Dued Date of Calibrate : 31-Oct-2023

Item	Instrument Calibrated			Reference Acoustic dB	Before Adjust				After Adjust ± dB	Deviation ± dB	Result Calibrate
	Brand	Model	Serial NO.		ครั้งที่ 1	ครั้งที่ 2	ครั้งที่ 3	เฉลี่ย			
18	ACO	6226	070046	94.0	93.8	93.8	93.8	93.8	94.0	0.2	PASS
				114.0	113.9	113.9	113.9	113.9			
19	ACO	6226	070047	94.0	93.8	93.8	93.8	93.8	94.0	0.2	PASS
				114.0	113.8	113.8	113.8	113.8			
20	ACO	6226	070048	94.0	94.1	94.1	94.1	94.1	94.0	0.1	PASS
				114.0	114.0	114.0	114.0	114.0			
21	ACO	6226	070049	94.0	93.9	93.9	93.9	93.9	94.0	0.1	PASS
				114.0	113.9	113.9	113.9	113.9			
23	RION	NL-21	00487676	94.0	93.9	93.9	93.9	93.9	94.0	0.1	PASS
				114.0	113.8	113.8	113.8	113.8			
25	ACO	6226	100098	94.0	94.2	94.2	94.2	94.2	94.0	0.2	PASS
				114.0	114.1	114.1	114.1	114.1			
26	ACO	6226	100099	94.0	94.1	94.1	94.1	94.1	94.0	0.1	PASS
				114.0	114.1	114.1	114.1	114.1			
28	ACO	6226	100101	94.0	93.9	93.9	93.9	93.9	94.0	0.1	PASS
				114.0	114.0	114.0	114.0	114.0			
29	ACO	6226	100102	94.0	94.2	94.2	94.2	94.2	94.0	0.2	PASS
				114.0	114.1	114.1	114.1	114.1			
30	ACO	6226	100106	94.0	93.8	93.8	93.8	93.8	94.0	0.2	PASS
				114.0	113.8	113.8	113.8	113.8			

Calibration By : 

Approve by : 



Thai Environmental Technic Limited  
บริษัท เทคโนโลยีสิ่งแวดล้อมไทย จำกัด

## Sound Level Meter Calibration Report

Equipment Type	: Sound Level Meter	Calibration Date	: 24-Sep-2023
Calibrator	: TENMARS Sound Calibrator TM-100	Barometric pressure (mmHg)	: 759.0 mmHg
Standard	: IEC 60942	Temperature (23±3)°C	: 25.60 °C
Accuracy	: 94.0 ±0.3 dB and 114.0±0.5 dB	Relative Humidity(50±15 %)	: 50.0 % RH
Frequency	: at 1,000 Hz ±1%	Dued Date of Calibrate	: 31-Oct-2023
Calibrator Serial NO.	: 181203570		

Item	Instrument Calibrated			Reference Acoustic dB	Before Adjust				After Adjust ± dB	Deviation ± dB	Result Calibrate
	Brand	Model	Serial NO.		ครั้งที่ 1	ครั้งที่ 2	ครั้งที่ 3	เฉลี่ย			
31	ACO	6226	110098	94.0	94.2	94.2	94.2	94.2	94.0	0.2	PASS
				114.0	114.0	114.0	114.0	114.0			
32	ACO	6226	110105	94.0	94.1	94.1	94.1	94.1	94.0	0.1	PASS
				114.0	114.1	114.1	114.1	114.1			
33	ACO	6226	110096	94.0	93.9	93.9	93.9	93.9	94.0	0.1	PASS
				114.0	113.8	113.8	113.8	113.8			
34	ACO	6226	110099	94.0	94.1	94.1	94.1	94.1	94.0	0.1	PASS
				114.0	114.1	114.1	114.1	114.1			
35	ACO	6226	110097	94.0	93.7	93.7	93.7	93.7	94.0	0.3	PASS
				114.0	113.7	113.7	113.7	113.7			
36	ACO	6226	110102	94.0	94.2	94.2	94.2	94.2	94.0	0.2	PASS
				114.0	114.1	114.1	114.1	114.1			
37	ACO	6226	110101	94.0	94.1	94.1	94.1	94.1	94.0	0.1	PASS
				114.0	114.0	114.0	114.0	114.0			
38	ACO	6226	110106	94.0	93.9	93.9	93.9	93.9	94.0	0.1	PASS
				114.0	113.9	113.9	113.9	113.9			
39	ACO	6226	110104	94.0	94.1	94.1	94.1	94.1	94.0	0.1	PASS
				114.0	114.0	114.0	114.0	114.0			
40	ACO	6226	110100	94.0	93.9	93.9	93.9	93.9	94.0	0.1	PASS
				114.0	113.8	113.8	113.8	113.8			

Calibration By : 

Approve by : 






Thai Environmental Technic Limited  
บริษัท เทคนิกสิ่งแวดล้อมไทย จำกัด

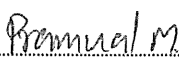
## Sound Level Meter Calibration Report

Equipment Type : Sound Level Meter  
Calibrator : TENMARS Sound Calibrator TM-100  
Standard : IEC 60942  
Accuracy : 94.0 ±0.3 dB and 114.0 ±0.5 dB  
Frequency : at 1,000 Hz ±1%  
Calibrator Serial NO. : 181203570

Calibration Date : 24-Sep-2023  
Barometric pressure (mmHg) : 759.0 mmHg  
Temperature (23±3)°C : 25.60 °C  
Relative Humidity(50±15 %) : 50.0 % RH  
Dued Date of Calibrate : 31-Oct-2023

Item	Instrument Calibrated			Reference Acoustic dB	Before Adjust				After Adjust ± dB	Deviation ± dB	Result Calibrate
	Brand	Model	Serial NO.		ครั้งที่ 1	ครั้งที่ 2	ครั้งที่ 3	เฉลี่ย			
41	ACO	6226	130127	94.0	94.1	94.1	94.1	94.1	94.0	0.1	PASS
				114.0	114.0	114.0	114.0	114.0			
42	ACO	6226	130128	94.0	93.9	93.9	93.9	93.9	94.0	0.1	PASS
				114.0	113.9	113.9	113.9	113.9			
43	ACO	6226	130129	94.0	94.1	94.1	94.1	94.1	94.0	0.1	PASS
				114.0	113.9	113.9	113.9	113.9			
44	ACO	6226	130130	94.0	94.1	94.1	94.1	94.1	94.0	0.1	PASS
				114.0	114.0	114.0	114.0	114.0			
45	ACO	6226	130131	94.0	94.2	94.2	94.2	94.2	94.0	0.2	PASS
				114.0	114.1	114.1	114.1	114.1			
46	ACO	6236	112029	94.0	94.1	94.1	94.1	94.1	94.0	0.1	PASS
				114.0	114.1	114.1	114.1	114.1			
47	ACO	6236	152073	94.0	93.8	93.8	93.8	93.8	94.0	0.2	PASS
				114.0	113.7	113.7	113.7	113.7			
48	ACO	6236	152074	94.0	93.9	93.9	93.9	93.9	94.0	0.1	PASS
				114.0	113.9	113.9	113.9	113.9			
49	ACO	6236	152075	94.0	94.2	94.2	94.2	94.2	94.0	0.2	PASS
				114.0	114.1	114.1	114.1	114.1			
50	ACO	6236	152076	94.0	93.8	93.8	93.8	93.8	94.0	0.2	PASS
				114.0	113.7	113.7	113.7	113.7			

Calibration By : 

Approve by : 



Thai Environmental Technic Limited  
บริษัท เทคโนโลยีสิ่งแวดล้อมไทย จำกัด

## Sound Level Meter Calibration Report

Equipment Type	: Sound Level Meter	Calibration Date	: 24-Sep-2023
Calibrator	: TENMARS Sound Calibrator TM-100	Barometric pressure (mmHg)	: 759.0 mmHg
Standard	: IEC 60942	Temperature (23±3)°C	: 25.60 °C
Accuracy	: 94.0 ±0.3 dB and 114.0 ±0.5 dB	Relative Humidity(50±15 %)	: 50.0 % RH
Frequency	: at 1,000 Hz ±1%	Dued Date of Calibrate	: 31-Oct-2023
Calibrator Serial NO.	: 181203570		

Item	Instrument Calibrated			Reference Acoustic dB	Before Adjust				After Adjust ± dB	Deviation ± dB	Result Calibrate
	Brand	Model	Serial NO.		ครั้งที่ 1	ครั้งที่ 2	ครั้งที่ 3	เฉลี่ย			
51	ACO	6236	152077	94.0	94.1	94.1	94.1	94.1	94.0	0.2	PASS
				114.0	114.1	114.1	114.1	114.1			
52	ACO	6226	150142	94.0	93.9	93.9	93.9	93.9	94.0	0.1	PASS
				114.0	113.9	113.9	113.9	113.9			
53	ACO	6226	160095	94.0	94.1	94.1	94.1	94.1	94.0	0.1	PASS
				114.0	114.0	114.0	114.0	114.0			
54	ACO	6226	160096	94.0	94.0	94.0	94.0	94.0	94.0	0.0	PASS
				114.0	113.9	113.9	113.9	113.9			
55	ACO	6226	160097	94.0	94.1	94.1	94.1	94.1	94.0	0.1	PASS
				114.0	114.0	114.0	114.0	114.0			
56	ACO	6226	160098	94.0	93.9	93.9	93.9	93.9	94.0	0.1	PASS
				114.0	113.9	113.9	113.9	113.9			
57	ACO	6226	160099	94.0	94.0	94.0	94.0	94.0	94.0	0.0	PASS
				114.0	114.0	114.0	114.0	114.0			
58	ACO	6226	160143	94.0	94.1	94.1	94.1	94.1	94.0	0.1	PASS
				114.0	1214.0	1214.0	1214.0	1214.0			
59	ACO	6226	160203	94.0	94.0	94.0	94.0	94.0	94.0	0.1	PASS
				114.0	114.1	114.1	114.1	114.1			
60	ACO	6226	160204	94.0	93.8	93.8	93.8	93.8	94.0	0.2	PASS
				114.0	113.8	113.8	113.8	113.8			

Calibration By : 

Approve by : 




Thai Environmental Technic Limited  
บริษัท เทคนิกสิ่งแวดล้อมไทย จำกัด

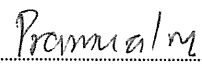
## Sound Level Meter Calibration Report

Equipment Type : Sound Level Meter  
Calibrator : TENMARS Sound Calibrator TM-100  
Standard : IEC 60942  
Accuracy : 94.0 ±0.3 dB and 114.0 ±0.5 dB  
Frequency : at 1,000 Hz ±1%  
Calibrator Serial NO. : 181203570

Calibration Date : 24-Sep-2023  
Barometric pressure (mmHg) : 759.0 mmHg  
Temperature (23±3)°C : 25.60 °C  
Relative Humidity(50±15 %) : 50.0 % RH  
Dued Date of Calibrate : 31-Oct-2023

Item	Instrument Calibrated			Reference Acoustic dB	Before Adjust				After Adjust ± dB	Deviation ± dB	Result Calibrate
	Brand	Model	Serial NO.		ครั้งที่ 1	ครั้งที่ 2	ครั้งที่ 3	เฉลี่ย			
61	ACO	6226	160205	94.0	94.1	94.1	94.1	94.1	94.0	0.1	PASS
				114.0	113.9	113.9	113.9	113.9			
62	ACO	6226	160211	94.0	93.8	93.8	93.8	93.8	94.0	0.2	PASS
				114.0	113.7	113.7	113.7	113.7			
63	ACO	6226	160212	94.0	94.1	94.1	94.1	94.1	94.0	0.1	PASS
				114.0	114.1	114.1	114.1	114.1			
64	ACO	6226	160213	94.0	93.9	93.9	93.9	93.9	94.0	0.1	PASS
				114.0	113.9	113.9	113.9	113.9			
66	ACO	6226	160215	94.0	94.0	94.0	94.0	94.0	94.0	0.0	PASS
				114.0	114.0	114.0	114.0	114.0			
67	ACO	6226	160216	94.0	94.0	94.0	94.0	94.0	94.0	0.0	PASS
				114.0	113.9	113.9	113.9	113.9			
68	ACO	6236	222036	94.0	94.1	94.1	94.1	94.1	94.0	0.1	PASS
				114.0	114.0	114.0	114.0	114.0			
69	ACO	6236	222037	94.0	93.7	93.7	93.7	93.7	94.0	0.3	PASS
				114.0	113.8	113.8	113.8	113.8			
70	ACO	6236	222038	94.0	94.2	94.2	94.2	94.2	94.0	0.2	PASS
				114.0	114.1	114.1	114.1	114.1			
71	ACO	6236	222039	94.0	93.8	93.8	93.8	93.8	94.0	0.2	PASS
				114.0	113.8	113.8	113.8	113.8			
72	ACO	6236	222040	94.0	94.1	94.1	94.1	94.1	94.0	0.1	PASS
				114.0	114.1	114.1	114.1	114.1			

Calibration By : 

Approve by : 



Thai Environmental Technic Limited  
บริษัท เทคโนโลยีสิ่งแวดล้อมไทย จำกัด

## Sound Level Meter Calibration Report

Equipment Type : Sound Level Meter  
Calibrator : TENMARS Sound Calibrator TM-100  
Standard : IEC 60942  
Accuracy :  $94.0 \pm 0.3$  dB and  $114.0 \pm 0.5$  dB  
Frequency : at 1,000 Hz  $\pm 1\%$   
Calibrator Serial NO. : 181203570

Calibration Date : 24-Sep-2023  
Barometric pressure (mmHg) : 759.0 mmHg  
Temperature (23 $\pm$ 3) $^{\circ}$ C : 25.60  $^{\circ}$ C  
Relative Humidity(50 $\pm$ 15 %) : 50.0 % RH  
Dued Date of Calibrate : 31-Oct-2023

Item	Instrument Calibrated			Reference Acoustic dB	Before Adjust				After Adjust $\pm$ dB	Deviation $\pm$ dB	Result Calibrate
	Brand	Model	Serial NO.		ครั้งที่ 1	ครั้งที่ 2	ครั้งที่ 3	เฉลี่ย			
73	ACO	6236	222244	94.0	94.0	94.0	94.0	94.0	94.0	0.0	PASS
				114.0	114.0	114.0	114.0	114.0			
74	ACO	6236	222245	94.0	94.0	94.0	94.0	94.0	94.0	0.0	PASS
				114.0	114.0	114.0	114.0	114.0			
75	ACO	6236	222246	94.0	94.1	94.1	94.1	94.1	94.0	0.1	PASS
				114.0	114.0	114.0	114.0	114.0			
76	ACO	6236	222247	94.0	94.0	94.0	94.0	94.0	94.0	0.0	PASS
				114.0	114.0	114.0	114.0	114.0			
77	ACO	6236	222248	94.0	94.1	94.1	94.1	94.1	94.0	0.1	PASS
				114.0	114.0	114.0	114.0	114.0			

Calibration By : 

Approve by : 



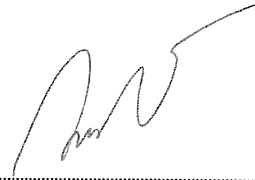
Thai Environmental Technic Limited  
บริษัท เทคโนโลยีสิ่งแวดล้อมไทย จำกัด

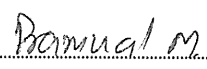
## Sound Level Meter Calibration Report

Equipment Type : Sound Level Meter  
Calibrator : SCARLET ST-120  
Standard : IEC 60942:2017 CLASS1  
Accuracy : 94.0 ±0.3 dB and 114.0 ±0.5 dB  
Frequency : at 1,000 Hz ±1%  
Calibrator Serial NO. : ST120C0263E

Calibration Date : 24-Sep-2023  
Barometric pressure (mmHg) : 759.0 mmHg  
Temperature (23±3)°C : 25.60 °C  
Relative Humidity(50±15 %) : 50.0 % RH  
Dued Date of Calibrate : 31-Oct-2023

Item	Instrument Calibrated			Reference Acoustic dB	Before Adjust				After Adjust ± dB	Deviation ± dB	Result Calibrate
	Brand	Model	Serial NO.		ครั้งที่ 1	ครั้งที่ 2	ครั้งที่ 3	เฉลี่ย			
78	SCARLET	ST-11D	820390	94.0	94.0	94.0	94.0	94.0	94.0	0.0	PASS
				114.0	114.0	114.0	114.0	114.0			
79	SCARLET	ST-11D	820391	94.0	94.0	94.0	94.0	94.0	94.0	0.0	PASS
				114.0	114.0	114.0	114.0	114.0			
80	SCARLET	ST-11D	820392	94.0	94.1	94.1	94.1	94.1	94.0	0.1	PASS
				114.0	114.0	114.0	114.0	114.0			
81	SCARLET	ST-11D	820393	94.0	93.9	93.9	93.9	93.9	94.0	0.1	PASS
				114.0	113.8	113.8	113.8	113.8			
82	SCARLET	ST-11D	820394	94.0	94.0	94.0	94.0	94.0	94.0	0.0	PASS
				114.0	114.0	114.0	114.0	114.0			
83	SCARLET	ST-11D	820877	94.0	93.9	93.9	93.9	93.9	94.0	0.1	PASS
				114.0	113.9	113.9	113.9	113.9			
84	SCARLET	ST-11D	820878	94.0	94.0	94.0	94.0	94.0	94.0	0.0	PASS
				114.0	114.0	114.0	114.0	114.0			
85	SCARLET	ST-11D	820879	94.0	94.1	94.1	94.1	94.1	94.0	0.1	PASS
				114.0	114.0	114.0	114.0	114.0			

Calibration By : 

Approve by : 





## Certificate of Calibration

Certificate Number : SPR23010143-2

Page : 1 of 4

Customer : Thai Environmental Technic Limited.

1/6 Soi Ramkhamhaeng 145, Khwaeng Saphan Sung, Khet Saphan  
Sung, Bangkok 10240, Thailand.

Equipment Name : Vibration

Manufacturer : Instantel

Model : Micromate

Serial Number : UM16047

ID. Number : No.14

### Environmental Conditions

Ambient Temperature :  $23^{\circ}\text{C} \pm 3^{\circ}\text{C}$

Received Date : 13 Jan 2023

Relative Humidity :  $50\% \pm 15\%$

Calibration Date : 17 Jan 2023

Location of Calibration : In-Lab

Recommend Due Date : 17 Jan 2024

Calibration Procedure : In-House Method

Date of Issue : 18 Jan 2023

### Method of Calibration

This certifies that the above instrument was calibrated in compliance with the calibration system requirement of ISO/IEC 17025:2017 in accordance with reference procedure. Standards used to perform this calibration are certified by to NIST or equivalent, National metrology institute, Natural physical constants, consensus standards. The result reported herein apply only to the calibration of the item described above as received. Our decision rule is to contact the customer if the item pass and fail calibration when the results include the uncertainties and the customer must determine if the results meets their needs.

All calibrations are performed within manufacture's specifications. The calibration certificate shall not be reproduced except in full, without written approval of SP Metrology System (Thailand).

Calibrated by : Mr. Munin Khumpum

Approved by :

Calibration Officer

( Ms. Bussakorn Chaikaew )

Authorized Signatory



## Calibration Report

Certificate Number : SPR23010143-2

Page : 2 of 4

### Reference Standards

Equipment Name	Model	Serial No.	Certificate No.	Due. Date
Vibration Calibrator	VC-02	2007014	AV-0050-20	10 Dec 2023

### Traceability

This certification is traceable to the International System of Unit maintained at :  
NIMT - The National Institute of Metrology, Thailand.





## Result of Calibration

Certificate No. : SPR23010143-2

Page : 3 of 4

Results of Calibration : (\*) Without ( ) After Adjustment

Geophone P/N 721A3301 Functional Performance Test @160Hz

Function	STD Reading	UUC. Reading	Error	Uncertainty (±)
Velocity (mm/s)	5.004	4.988	-0.016	0.059

Frequency Response Performance Test @ 5 mm/s Unit : mm/s

Frequency (Hz)	STD Reading	UUC. Reading	Error	Uncertainty (±)
10.0	5.025	4.989	-0.036	0.058
20.0	5.022	4.987	-0.035	0.058
50.0	5.019	4.985	-0.034	0.058
80.0	5.014	4.985	-0.029	0.058
100.0	5.005	4.987	-0.018	0.058
160.0	5.011	4.984	-0.027	0.058
200.0	5.016	4.980	-0.036	0.058



## Result of Calibration

Certificate No. : SPR23010143-2

Page : 4 of 4

Results of Calibration : (\*) Without ( ) After Adjustment

Linearity Performance Test

Unit : m/s<sup>2</sup>

Frequency (Hz)	STD Reading	UUC. Reading	Error	Uncertainty (±)
160.0	0.501	0.511	0.010	0.0060
160.0	1.001	1.013	0.012	0.012
160.0	1.503	1.490	-0.013	0.017
160.0	2.004	1.983	-0.021	0.023
160.0	3.014	2.982	-0.032	0.035
160.0	5.017	4.983	-0.034	0.058

### Note:

The result of calibration was found accurate as show on date and place of calibration only.

This Certificate is not certified for any commercial transaction.

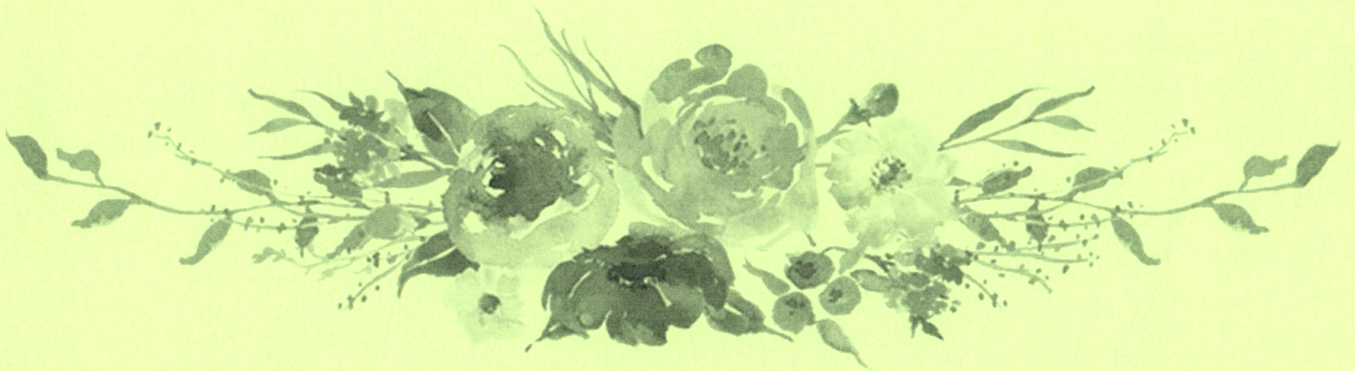
### Measurement Uncertainty

The reported uncertainty of measurement is the expanded uncertainty obtained by multiplying the standard uncertainty with the coverage factor  $k = 2$ , providing a level of confidence approximately 95%

- End of Certificate -

## ภาคผนวก ฉ

หนังสือขึ้นทะเบียนห้องปฏิบัติการวิเคราะห์เอกชน (ว-236)









ที่ อก ๐๓๑๐(๑)/ ๙ ๘ ๗ ๖

กรมโรงงานอุตสาหกรรม  
ถนนพระรามที่ ๖ แขวงทุ่งพญาไท  
เขตราชเทวี กรุงเทพฯ ๑๐๔๐๐

๒ ๒ มิถุนายน ๒๕๖๖

เรื่อง ต่ออายุหนังสือรับขึ้นทะเบียนห้องปฏิบัติการวิเคราะห์เอกชน

เรียน กรรมการผู้จัดการ บริษัท เทคนิคสิ่งแวดล้อมไทย จำกัด

อ้างถึง คำขอขึ้นทะเบียน/ต่ออายุ/เปลี่ยนแปลงบุคลากร และชนิดสารมลพิษของห้องปฏิบัติการวิเคราะห์เอกชน  
ลงวันที่ ๓ มีนาคม ๒๕๖๖

สิ่งที่ส่งมาด้วย เอกสารแนบท้ายหนังสือรับต่ออายุขึ้นทะเบียนห้องปฏิบัติการวิเคราะห์เอกชน  
บริษัท เทคนิคสิ่งแวดล้อมไทย จำกัด จำนวน ๒๘ แผ่น

ตามหนังสือที่อ้างถึง บริษัท เทคนิคสิ่งแวดล้อมไทย จำกัด ขอต่ออายุหนังสือรับขึ้นทะเบียน  
ห้องปฏิบัติการวิเคราะห์เอกชน เลขทะเบียน ว-๒๓๖ สถานที่ตั้งเลขที่ ๑/๖ ซอยรามคำแหง ๑๔๕ แขวงสะพานสูง  
เขตสะพานสูง กรุงเทพมหานคร ต่อกรมโรงงานอุตสาหกรรม นั้น

กรมโรงงานอุตสาหกรรมพิจารณาแล้ว ให้บริษัท เทคนิคสิ่งแวดล้อมไทย จำกัด ต่ออายุหนังสือรับขึ้น  
ทะเบียนห้องปฏิบัติการวิเคราะห์เอกชน โดยมีองค์ประกอบดังนี้

ก. ผู้ควบคุมดูแลห้องปฏิบัติการวิเคราะห์

๑) นายณัฐพงศ์ โคตะมา

ทะเบียนเลขที่ ว-๒๓๖-ค-๐๐๐๑

๒) นางสาววาริรัตน์ ประชุมแดง

ทะเบียนเลขที่ ว-๒๓๖-ค-๐๐๐๒

๓) นางพรทิพย์ เพชรชี

ทะเบียนเลขที่ ว-๒๓๖-ค-๐๐๐๓

๔) นายสมชาย ปิยะวรสกุล

ทะเบียนเลขที่ ว-๒๓๖-ค-๐๐๐๔

๕) นายประมวล มุลสาร

ทะเบียนเลขที่ ว-๒๓๖-ค-๐๐๐๕

๖) นายรัฐพล สุขดี

ทะเบียนเลขที่ ว-๒๓๖-ค-๐๐๐๖

ข. เจ้าหน้าที่ประจำห้องปฏิบัติการวิเคราะห์

๑) นางสาวทอฝัน อัสวชัยสุวิกรม

ทะเบียนเลขที่ ว-๒๓๖-จ-๐๐๐๑

๒) นางสาวกมลลักษณ์ ตีเมงค

ทะเบียนเลขที่ ว-๒๓๖-จ-๐๐๐๒

๓) นางสาวกนกวรรณ เริ่มประชาธิปไตย

ทะเบียนเลขที่ ว-๒๓๖-จ-๐๐๐๓

๔) นางสาวฐิติพรรณ ศรีสุวรรณ

ทะเบียนเลขที่ ว-๒๓๖-จ-๐๐๐๔

๕) นางสาวธนิดา กมุขชาติ

ทะเบียนเลขที่ ว-๒๓๖-จ-๐๐๐๕

๖) นางสาวมาลินี มณีรัตน์

ทะเบียนเลขที่ ว-๒๓๖-จ-๐๐๐๖

๗) นางสาวพัชรพรรณ สว่างภพ

ทะเบียนเลขที่ ว-๒๓๖-จ-๐๐๐๗

๘) นายสุริยะพงศ์ ยงยุทธ

ทะเบียนเลขที่ ว-๒๓๖-จ-๐๐๐๘

๙) นางสาวดอกรัก สีเหล็ก

ทะเบียนเลขที่ ว-๒๓๖-จ-๐๐๐๙

๑๐) นางสาวศิริพร กาจิต

ทะเบียนเลขที่ ว-๒๓๖-จ-๐๐๑๐

๑๑) นายสุชาติ ศรีบุญ

ทะเบียนเลขที่ ว-๒๓๖-จ-๐๐๑๑

๑๒) นายเกียรติศักดิ์ วันดี

ทะเบียนเลขที่ ว-๒๓๖-จ-๐๐๑๒

๑๓) นายจิรวัดน์...

๑๓) นายจิรวัดน์ อินทะเสย์	ทะเบียนเลขที่ ว-๒๓๖-จ-๐๐๑๓
๑๔) นางสาวนิตยา เย็นวัฒนา	ทะเบียนเลขที่ ว-๒๓๖-จ-๐๐๑๔
๑๕) นางสาวณัฐธยาน์ สารแสง	ทะเบียนเลขที่ ว-๒๓๖-จ-๐๐๑๕
๑๖) นายกิตติศักดิ์ เมืองงาม	ทะเบียนเลขที่ ว-๒๓๖-จ-๐๐๑๖
๑๗) นายเทวพงศ์ เขยวัดเกาะ	ทะเบียนเลขที่ ว-๒๓๖-จ-๐๐๑๗
๑๘) นายเฉลิมวุฒิ พูลสงวน	ทะเบียนเลขที่ ว-๒๓๖-จ-๐๐๑๘
๑๙) นางสาวนุชศิริ อรชร	ทะเบียนเลขที่ ว-๒๓๖-จ-๐๐๑๙
๒๐) นางสาววรรณศิริ สุริยวงศ์	ทะเบียนเลขที่ ว-๒๓๖-จ-๐๐๒๐
๒๑) นายวิฑูร วลัยรัตน์	ทะเบียนเลขที่ ว-๒๓๖-จ-๐๐๒๑
๒๒) นางสาวกังสดาล จอกสูงเนิน	ทะเบียนเลขที่ ว-๒๓๖-จ-๐๐๒๒
๒๓) นางสาวสุภักษญา อยู่นิม	ทะเบียนเลขที่ ว-๒๓๖-จ-๐๐๒๓
๒๔) นางสาวลลิตา ตรีโยตมร	ทะเบียนเลขที่ ว-๒๓๖-จ-๐๐๒๔
๒๕) นายเจอ แซ่หว่า	ทะเบียนเลขที่ ว-๒๓๖-จ-๐๐๒๕
๒๖) นายอรรถพล วงศ์สวัสดิ์	ทะเบียนเลขที่ ว-๒๓๖-จ-๐๐๒๖
๒๗) นายประหยัด จิวเดช	ทะเบียนเลขที่ ว-๒๓๖-จ-๐๐๒๗
๒๘) นายเบญจพล กรีกงคา	ทะเบียนเลขที่ ว-๒๓๖-จ-๐๐๒๘
๒๙) นายวีรพล บุตสา	ทะเบียนเลขที่ ว-๒๓๖-จ-๐๐๒๙
๓๐) นายพิเชฐ อยู่ติรัมย์	ทะเบียนเลขที่ ว-๒๓๖-จ-๐๐๓๐
๓๑) นายณัฐดนัย ศรีรัตนชัยวาลย์	ทะเบียนเลขที่ ว-๒๓๖-จ-๐๐๓๑

ค. ขอบข่ายสารมลพิษที่ได้รับขึ้นทะเบียนให้วิเคราะห์ในน้ำเสีย น้ำใต้ดิน อากาศเสีย สิ่งปฏิภูลหรือวัสดุที่ไม่ใช่แล้ว และดิน ตามสิ่งที่ส่งมาด้วย

หนังสือฉบับนี้จะหมดอายุในวันที่ ๑๓ มีนาคม ๒๕๖๙ หากประสงค์จะต่ออายุหนังสือรับขึ้นทะเบียนห้องปฏิบัติการวิเคราะห์เอกชน ให้ยื่นคำขอต่ออายุพร้อมเอกสารประกอบคำขอต่อกรมโรงงานอุตสาหกรรม ภายใน ๓๐ วัน ก่อนวันสิ้นอายุของหนังสือรับขึ้นทะเบียนห้องปฏิบัติการวิเคราะห์เอกชน ทั้งนี้ สามารถยื่นคำขอผ่านระบบอิเล็กทรอนิกส์ได้ที่หน้าเว็บไซต์กรมโรงงานอุตสาหกรรม

จึงเรียนมาเพื่อทราบ

ขอแสดงความนับถือ

จรณ งาม

(นายประสม ดำรงพงษ์)  
ผู้อำนวยการกองวิจัยและเตือนภัยมลพิษโรงงาน  
ปฏิบัติราชการแทนอธิบดีกรมโรงงานอุตสาหกรรม

กองวิจัยและเตือนภัยมลพิษโรงงาน

กลุ่มมาตรฐานวิธีการวิเคราะห์ทดสอบมลพิษและทะเบียนห้องปฏิบัติการ

โทร. ๐ ๒๔๓๐ ๖๓๑๒ ต่อ ๒๑๐๓-๕

โทรสาร ๐ ๒๔๓๐ ๖๓๑๒ ต่อ ๒๑๙๙

ไปรษณีย์อิเล็กทรอนิกส์ saraban@diw.mail.go.th



เอกสารแนบท้ายหนังสือรับต่ออายุขึ้นทะเบียนห้องปฏิบัติการวิเคราะห์เอกชน

บริษัท เทคนิคสิ่งแวดล้อมไทย จำกัด

เลขทะเบียน ว-๒๓๖

ที่ อก ๐๓๑๐(๑)/ ๙ ๘ ๗ ๖

ลงวันที่ ๒๒ มิถุนายน ๒๕๖๖

ขอขยายสารมลพิษที่ได้รับขึ้นทะเบียนจากกรมโรงงานอุตสาหกรรม จำนวน ๓๓๗ รายการ

น้ำเสีย จำนวน 40 รายการ

ลำดับที่	สารมลพิษ	วิธีวิเคราะห์
1	Aldrin	Liquid-Liquid Extraction, Gas Chromatographic Method <sup>[4]</sup>
2	Arsenic	Digestion, Hydride Generation/Atomic Absorption Spectrometric Method <sup>[4]</sup>
3	Barium	1) Digestion, Direct Nitrous Oxide-Acetylene Flame Method <sup>[4]</sup> 2) Digestion, Electrothermal Atomic Absorption Spectrometric Method <sup>[4]</sup> 3) Digestion, Inductively Coupled Plasma Method <sup>[4]</sup>
4	α-BHC	Liquid-Liquid Extraction, Gas Chromatographic Method <sup>[4]</sup>
5	γ-BHC	Liquid-Liquid Extraction, Gas Chromatographic Method <sup>[4]</sup>
6	Biochemical Oxygen Demand	5-Day BOD Test, Azide Modification Method <sup>[4]</sup>
7	Cadmium	1) Digestion, Direct Air-Acetylene Flame Method <sup>[4]</sup> 2) Digestion, Electrothermal Atomic Absorption Spectrometric Method <sup>[4]</sup> 3) Digestion, Inductively Coupled Plasma Method <sup>[4]</sup>
8	Chemical Oxygen Demand	Closed Reflux, Titrimetric Method <sup>[4]</sup>
9	Chlordane	Liquid-Liquid Extraction, Gas Chromatographic Method <sup>[4]</sup>
10	Chromium	1) Digestion, Direct Air-Acetylene Flame Method <sup>[4]</sup> 2) Digestion, Electrothermal Atomic Absorption Spectrometric Method <sup>[4]</sup> 3) Digestion, Inductively Coupled Plasma Method <sup>[4]</sup>
11	Color	ADMI Weighted-Ordinate Spectrophotometric Method <sup>[4]</sup>
12	Copper	1) Digestion, Direct Air-Acetylene Flame Method <sup>[4]</sup> 2) Digestion, Electrothermal Atomic Absorption Spectrometric Method <sup>[4]</sup> 3) Digestion, Inductively Coupled Plasma Method <sup>[4]</sup>
13	Cyanide	Distillation, Colorimetric Method <sup>[4]</sup>
14	4,4'-DDE	Liquid-Liquid Extraction, Gas Chromatographic Method <sup>[4]</sup>
15	4,4'-DDT	Liquid-Liquid Extraction, Gas Chromatographic Method <sup>[4]</sup>
16	Dieldrin	Liquid-Liquid Extraction, Gas Chromatographic Method <sup>[4]</sup>



ลำดับที่	สารมลพิษ	วิธีวิเคราะห์
17	Endosulfan I	Liquid-Liquid Extraction, Gas Chromatographic Method <sup>[4]</sup>
18	Endosulfan II	Liquid-Liquid Extraction, Gas Chromatographic Method <sup>[4]</sup>
19	Endosulfan Sulfate	Liquid-Liquid Extraction, Gas Chromatographic Method <sup>[4]</sup>
20	Endrin	Liquid-Liquid Extraction, Gas Chromatographic Method <sup>[4]</sup>
21	Formaldehyde	Distillation, Colorimetric Method <sup>[3]</sup>
22	Free Chlorine	DPD Ferrous Titrimetric Method <sup>[4]</sup>
23	Heptachlor	Liquid-Liquid Extraction, Gas Chromatographic Method <sup>[4]</sup>
24	Heptachlor Epoxide	Liquid-Liquid Extraction, Gas Chromatographic Method <sup>[4]</sup>
25	Hexavalent Chromium	Colorimetric Method <sup>[4]</sup>
26	Lead	1) Digestion, Direct Air-Acetylene Flame Method <sup>[4]</sup> 2) Digestion, Electrothermal Atomic Absorption Spectrometric Method <sup>[4]</sup> 3) Digestion, Inductively Coupled Plasma Method <sup>[4]</sup>
27	Manganese	1) Digestion, Direct Air-Acetylene Flame Method <sup>[4]</sup> 2) Digestion, Electrothermal Atomic Absorption Spectrometric Method <sup>[4]</sup> 3) Digestion, Inductively Coupled Plasma Method <sup>[4]</sup>
28	Mercury	Digestion, Cold-Vapor Atomic Absorption Spectrometric Method <sup>[4]</sup>
29	Nickel	1) Digestion, Direct Air-Acetylene Flame Method <sup>[4]</sup> 2) Digestion, Electrothermal Atomic Absorption Spectrometric Method <sup>[4]</sup> 3) Digestion, Inductively Coupled Plasma Method <sup>[4]</sup>
30	Oil & Grease	1) Liquid-Liquid, Partition-Gravimetric Method <sup>[4]</sup> 2) Soxhlet Extraction Method <sup>[4]</sup>
31	pH	Electrometric Method <sup>[4]</sup>
32	Phenols	Distillation, Direct Photometric Method <sup>[4]</sup>
33	Selenium	Digestion, Hydride Generation/Atomic Absorption Spectrometric Method <sup>[4]</sup>
34	Sulfide	1) Iodometric Method <sup>[4]</sup> 2) Methylene Blue Method <sup>[4]</sup>
35	Temperature	Laboratory and Field Methods <sup>[4]</sup>
36	Total Dissolved Solids	Dried at 180 °C <sup>[4]</sup>
37	Total Kjeldahl Nitrogen	Macro-Kjeldahl Method <sup>[4]</sup>
38	Total Suspended Solids	Dried at 103-105 °C <sup>[4]</sup>



ลำดับที่	สารมลพิษ	วิธีวิเคราะห์
39	Trivalent Chromium	Digestion, Inductively Coupled Plasma Method; Colorimetric Method; Calculation <sup>[4]</sup>
40	Zinc	1) Digestion, Direct Air-Acetylene Flame Method <sup>[4]</sup> 2) Digestion, Electrothermal Atomic Absorption Spectrometric Method <sup>[4]</sup> 3) Digestion, Inductively Coupled Plasma Method <sup>[4]</sup>

น้ำใต้ดิน จำนวน 122 รายการ

ลำดับที่	สารมลพิษ	วิธีวิเคราะห์
1	Acenaphthene	Liquid-Liquid Extraction, Gas Chromatographic/ Mass Spectrometric Method <sup>[4]</sup>
2	Acetone	Purge and Trap Gas Chromatographic/ Mass Spectrometric Method <sup>[4]</sup>
3	Aldrin	Liquid-Liquid Extraction, Gas Chromatographic Method <sup>[4]</sup>
4	Anthracene	Liquid-Liquid Extraction, Gas Chromatographic/ Mass Spectrometric Method <sup>[4]</sup>
5	Antimony	1) Digestion, Direct Air-Acetylene Flame Method <sup>[4]</sup> 2) Digestion, Electrothermal Atomic Absorption Spectrometric Method <sup>[4]</sup> 3) Digestion, Inductively Coupled Plasma Method <sup>[4]</sup>
6	Arsenic	Digestion, Hydride Generation/Atomic Absorption Spectrometric Method <sup>[4]</sup>
7	Atrazine	Liquid-Liquid Extraction, Gas Chromatographic Method <sup>[4]</sup>
8	Barium	1) Digestion, Direct Nitrous Oxide-Acetylene Flame Method <sup>[4]</sup> 2) Digestion, Electrothermal Atomic Absorption Spectrometric Method <sup>[4]</sup> 3) Digestion, Inductively Coupled Plasma Method <sup>[4]</sup>
9	Benz(a)anthracene	Liquid-Liquid Extraction, Gas Chromatographic/ Mass Spectrometric Method <sup>[4]</sup>
10	Benzene	Purge and Trap Gas Chromatographic/ Mass Spectrometric Method <sup>[4]</sup>
11	Benzo(b)fluoranthene	Liquid-Liquid Extraction, Gas Chromatographic/ Mass Spectrometric Method <sup>[4]</sup>
12	Benzo(k)fluoranthene	Liquid-Liquid Extraction, Gas Chromatographic/ Mass Spectrometric Method <sup>[4]</sup>

ลำดับที่	สารมลพิษ	วิธีวิเคราะห์
13	Benzoic acid	Liquid-Liquid Extraction, Gas Chromatographic/ Mass Spectrometric Method <sup>[4]</sup>
14	Benzo(a)pyrene	Liquid-Liquid Extraction, Gas Chromatographic/ Mass Spectrometric Method <sup>[4]</sup>
15	Benzo(g,h,i)perylene	Liquid-Liquid Extraction, Gas Chromatographic/ Mass Spectrometric Method <sup>[4]</sup>
16	Beryllium	1) Digestion, Electrothermal Atomic Absorption Spectrometric Method <sup>[4]</sup> 2) Digestion, Inductively Coupled Plasma Method <sup>[4]</sup>
17	Bis(2-chloroethyl)ether	Liquid-Liquid Extraction, Gas Chromatographic/ Mass Spectrometric Method <sup>[4]</sup>
18	Bis(2-ethylhexyl)phthalate	Liquid-Liquid Extraction, Gas Chromatographic/ Mass Spectrometric Method <sup>[4]</sup>
19	Bromodichloromethane	Purge and Trap Gas Chromatographic/ Mass Spectrometric Method <sup>[4]</sup>
20	Bromoform	Purge and Trap Gas Chromatographic/ Mass Spectrometric Method <sup>[4]</sup>
21	Butanol	Purge and Trap Gas Chromatographic/ Mass Spectrometric Method <sup>[4]</sup>
22	Butyl benzyl phthalate	Liquid-Liquid Extraction, Gas Chromatographic/ Mass Spectrometric Method <sup>[4]</sup>
23	Cadmium	1) Digestion, Electrothermal Atomic Absorption Spectrometric Method <sup>[4]</sup> 2) Digestion, Inductively Coupled Plasma Method <sup>[4]</sup>
24	Carbazole	Liquid-Liquid Extraction, Gas Chromatographic Method <sup>[4]</sup>
25	Carbon disulfide	Purge and Trap Gas Chromatographic/ Mass Spectrometric Method <sup>[4]</sup>
26	Carbon tetrachloride	Purge and Trap Gas Chromatographic/ Mass Spectrometric Method <sup>[4]</sup>
27	Chlordane	Liquid-Liquid Extraction, Gas Chromatographic Method <sup>[4]</sup>
28	p-Chloroaniline	Liquid-Liquid Extraction, Gas Chromatographic Method <sup>[4]</sup>
29	Chlorobenzene	Purge and Trap Gas Chromatographic/ Mass Spectrometric Method <sup>[4]</sup>
30	Chlorodibromomethane	Purge and Trap Gas Chromatographic/ Mass Spectrometric Method <sup>[4]</sup>
31	Chloroform	Purge and Trap Gas Chromatographic/ Mass Spectrometric Method <sup>[4]</sup>

ลำดับที่	สารมลพิษ	วิธีวิเคราะห์
32	Chromium	1) Digestion, Direct Air-Acetylene Flame Method <sup>[4]</sup> 2) Digestion, Electrothermal Atomic Absorption Spectrometric Method <sup>[4]</sup> 3) Digestion, Inductively Coupled Plasma Method <sup>[4]</sup>
33	Chromium (III)	1) Digestion, Direct Air-Acetylene Flame Method; Colorimetric Method; Calculation <sup>[4]</sup> 2) Digestion, Electrothermal Atomic Absorption Spectrometric Method; Colorimetric Method; Calculation <sup>[4]</sup> 3) Digestion, Inductively Coupled Plasma Method; Colorimetric Method; Calculation <sup>[4]</sup>
34	Chromium (VI)	Colorimetric Method <sup>[4]</sup>
35	Chrysene	Liquid-Liquid Extraction, Gas Chromatographic/Mass Spectrometric Method <sup>[4]</sup>
36	Cyanide	Distillation, Colorimetric Method <sup>[4]</sup>
37	2,4-D	Liquid-Liquid Extraction, Gas Chromatographic Method <sup>[4]</sup>
38	DDD	Liquid-Liquid Extraction, Gas Chromatographic Method <sup>[4]</sup>
39	DDE	Liquid-Liquid Extraction, Gas Chromatographic Method <sup>[4]</sup>
40	DDT	Liquid-Liquid Extraction, Gas Chromatographic Method <sup>[4]</sup>
41	Dibenz(a,h)anthracene	Liquid-Liquid Extraction, Gas Chromatographic/Mass Spectrometric Method <sup>[4]</sup>
42	Di-n-butyl phthalate	Liquid-Liquid Extraction, Gas Chromatographic/Mass Spectrometric Method <sup>[4]</sup>
43	1,2-Dichlorobenzene	Purge and Trap Gas Chromatographic/Mass Spectrometric Method <sup>[4]</sup>
44	1,3-Dichlorobenzene	Purge and Trap Gas Chromatographic/Mass Spectrometric Method <sup>[4]</sup>
45	1,4-Dichlorobenzene	Purge and Trap Gas Chromatographic/Mass Spectrometric Method <sup>[4]</sup>
46	1,1-Dichloroethane	Purge and Trap Gas Chromatographic/Mass Spectrometric Method <sup>[4]</sup>
47	1,2-Dichloroethane	Purge and Trap Gas Chromatographic/Mass Spectrometric Method <sup>[4]</sup>
48	1,1-Dichloroethylene	Purge and Trap Gas Chromatographic/Mass Spectrometric Method <sup>[4]</sup>
49	cis-1,2-Dichloroethylene	Purge and Trap Gas Chromatographic/Mass Spectrometric Method <sup>[4]</sup>

ลำดับที่	สารมลพิษ	วิธีวิเคราะห์
50	trans-1,2-Dichloroethylene	Purge and Trap Gas Chromatographic/ Mass Spectrometric Method <sup>[4]</sup>
51	1,2-Dichloropropane	Purge and Trap Gas Chromatographic/ Mass Spectrometric Method <sup>[4]</sup>
52	1,3-Dichloropropane	Purge and Trap Gas Chromatographic/ Mass Spectrometric Method <sup>[4]</sup>
53	1,3-Dichloropropene	Purge and Trap Gas Chromatographic/ Mass Spectrometric Method <sup>[4]</sup>
54	Dieldrin	Liquid-Liquid Extraction, Gas Chromatographic Method <sup>[4]</sup>
55	Diethyl phthalate	Liquid-Liquid Extraction, Gas Chromatographic/ Mass Spectrometric Method <sup>[4]</sup>
56	2,4-Dimethylphenol	Liquid-Liquid Extraction, Gas Chromatographic Method <sup>[4]</sup>
57	2,4-Dinitrophenol	Liquid-Liquid Extraction, Gas Chromatographic Method <sup>[4]</sup>
58	2,4-Dinitrotoluene	Liquid-Liquid Extraction, Gas Chromatographic Method <sup>[4]</sup>
59	2,6-Dinitrotoluene	Liquid-Liquid Extraction, Gas Chromatographic Method <sup>[4]</sup>
60	Di-n-Octyl phthalate	Liquid-Liquid Extraction, Gas Chromatographic/ Mass Spectrometric Method <sup>[4]</sup>
61	Endosulfan	Liquid-Liquid Extraction, Gas Chromatographic Method <sup>[4]</sup>
62	Endrin	Liquid-Liquid Extraction, Gas Chromatographic Method <sup>[4]</sup>
63	Ethylbenzene	Purge and Trap Gas Chromatographic/ Mass Spectrometric Method <sup>[4]</sup>
64	Fluoranthene	Liquid-Liquid Extraction, Gas Chromatographic/ Mass Spectrometric Method <sup>[4]</sup>
65	Fluorene	Liquid-Liquid Extraction, Gas Chromatographic/ Mass Spectrometric Method <sup>[4]</sup>
66	Heptachlor	Liquid-Liquid Extraction, Gas Chromatographic Method <sup>[4]</sup>
67	Heptachlor epoxide	Liquid-Liquid Extraction, Gas Chromatographic Method <sup>[4]</sup>
68	Hexachloro-1,3-butadiene	Purge and Trap Gas Chromatographic/ Mass Spectrometric Method <sup>[4]</sup>
69	n-Hexane	Purge and Trap Gas Chromatographic/ Mass Spectrometric Method <sup>[4]</sup>
70	$\alpha$ -HCH	Liquid-Liquid Extraction, Gas Chromatographic Method <sup>[4]</sup>
71	$\beta$ -HCH	Liquid-Liquid Extraction, Gas Chromatographic Method <sup>[4]</sup>
72	$\gamma$ -HCH	Liquid-Liquid Extraction, Gas Chromatographic Method <sup>[4]</sup>
73	Hexachlorocyclopentadiene	Liquid-Liquid Extraction, Gas Chromatographic/ Mass Spectrometric Method <sup>[4]</sup>

วิกรม

ลำดับที่	สารมลพิษ	วิธีวิเคราะห์
74	Hexachloroethane	Liquid-Liquid Extraction, Gas Chromatographic/ Mass Spectrometric Method <sup>[4]</sup>
75	Indeno(1,2,3-cd)pyrene	Liquid-Liquid Extraction, Gas Chromatographic/ Mass Spectrometric Method <sup>[4]</sup>
76	Isophorone	Liquid-Liquid Extraction, Gas Chromatographic/ Mass Spectrometric Method <sup>[4]</sup>
77	Lead	1) Digestion, Electrothermal Atomic Absorption Spectrometric Method <sup>[4]</sup> 2) Digestion, Inductively Coupled Plasma Method <sup>[4]</sup>
78	Manganese	1) Digestion, Direct Air-Acetylene Flame Method <sup>[4]</sup> 2) Digestion, Electrothermal Atomic Absorption Spectrometric Method <sup>[4]</sup> 3) Digestion, Inductively Coupled Plasma Method <sup>[4]</sup>
79	Mercury	Digestion, Cold-Vapor Atomic Absorption Spectrometric Method <sup>[4]</sup>
80	Methanol	Purge and Trap Gas Chromatographic/ Mass Spectrometric Method <sup>[4]</sup>
81	Methoxychlor	Liquid-Liquid Extraction, Gas Chromatographic Method <sup>[4]</sup>
82	Methyl bromide	Purge and Trap Gas Chromatographic/ Mass Spectrometric Method <sup>[4]</sup>
83	Methylene chloride	Purge and Trap Gas Chromatographic/ Mass Spectrometric Method <sup>[4]</sup>
84	2-Methylphenol	Liquid-Liquid Extraction, Gas Chromatographic/ Mass Spectrometric Method <sup>[4]</sup>
85	2-Methylnaphthalene	Liquid-Liquid Extraction, Gas Chromatographic/ Mass Spectrometric Method <sup>[4]</sup>
86	Methyl tert-butyl ether	Purge and Trap Gas Chromatographic/ Mass Spectrometric Method <sup>[4]</sup>
87	Naphthalene	Purge and Trap Gas Chromatographic/ Mass Spectrometric Method <sup>[4]</sup>
88	Nickel	1) Digestion, Electrothermal Atomic Absorption Spectrometric Method <sup>[4]</sup> 2) Digestion, Inductively Coupled Plasma Method <sup>[4]</sup>
89	Nitrobenzene	Liquid-Liquid Extraction, Gas Chromatographic/ Mass Spectrometric Method <sup>[4]</sup>
90	N-Nitrosodiphenylamine	Liquid-Liquid Extraction, Gas Chromatographic/ Mass Spectrometric Method <sup>[4]</sup>

3m

ลำดับที่	สารมลพิษ	วิธีวิเคราะห์
91	N-Nitrosodi-n-propylamine	Liquid-Liquid Extraction, Gas Chromatographic/ Mass Spectrometric Method <sup>[4]</sup>
92	Polychlorinated Biphenyls PCB-1016 PCB-1221 PCB-1232 PCB-1242 PCB-1248 PCB-1254 PCB-1260	Liquid-Liquid Extraction, Gas Chromatographic Method <sup>[4]</sup>
93	Pentachlorophenol	Liquid-Liquid Extraction, Gas Chromatographic Method <sup>[4]</sup>
94	pH	Electrometric Method <sup>[4]</sup>
95	Phenanthrene	Liquid-Liquid Extraction, Gas Chromatographic/ Mass Spectrometric Method <sup>[4]</sup>
96	Phenol	1) Distillation, Direct Photometric Method <sup>[4]</sup> 2) Liquid-Liquid Extraction, Gas Chromatographic Method <sup>[4]</sup>
97	Pyrene	Liquid-Liquid Extraction, Gas Chromatographic/ Mass Spectrometric Method <sup>[4]</sup>
98	Selenium	Digestion, Hydride Generation/Atomic Absorption Spectrometric Method <sup>[4]</sup>
99	Silver	1) Digestion, Direct Air-Acetylene Flame Method <sup>[4]</sup> 2) Digestion, Electrothermal Atomic Absorption Spectrometric Method <sup>[4]</sup> 3) Digestion, Inductively Coupled Plasma Method <sup>[4]</sup>
100	Styrene	Purge and Trap Gas Chromatographic/ Mass Spectrometric Method <sup>[4]</sup>
101	1,1,2,2-Tetrachloroethane	Purge and Trap Gas Chromatographic/ Mass Spectrometric Method <sup>[4]</sup>
102	Tetrachloroethylene	Purge and Trap Gas Chromatographic/ Mass Spectrometric Method <sup>[4]</sup>
103	Toluene	Purge and Trap Gas Chromatographic/ Mass Spectrometric Method <sup>[4]</sup>
104	Toxaphene	Liquid-Liquid Extraction, Gas Chromatographic Method <sup>[4]</sup>
105	TPH (C <sub>5</sub> -C <sub>8</sub> )	Purge and Trap, Gas Chromatographic/ Mass Spectrometric Method <sup>[12,22]</sup>

ลำดับที่	สารมลพิษ	วิธีวิเคราะห์
106	TPH (C <sub>8</sub> -C <sub>16</sub> )	Separatory Funnel Liquid-Liquid Extraction, Gas Chromatographic Method <sup>[9,22]</sup>
107	TPH (C <sub>16</sub> -C <sub>35</sub> )	Separatory Funnel Liquid-Liquid Extraction, Gas Chromatographic Method <sup>[9,22]</sup>
108	1,2,4-Trichlorobenzene	Purge and Trap Gas Chromatographic/ Mass Spectrometric Method <sup>[4]</sup>
109	1,1,1-Trichloroethane	Purge and Trap Gas Chromatographic/ Mass Spectrometric Method <sup>[4]</sup>
110	1,1,2-Trichloroethane	Purge and Trap Gas Chromatographic/ Mass Spectrometric Method <sup>[4]</sup>
111	Trichloroethylene	Purge and Trap Gas Chromatographic/ Mass Spectrometric Method <sup>[4]</sup>
112	2,4,5-Trichlorophenol	Liquid-Liquid Extraction, Gas Chromatographic Method <sup>[4]</sup>
113	2,4,6-Trichlorophenol	Liquid-Liquid Extraction, Gas Chromatographic Method <sup>[4]</sup>
114	1,3,5-Trimethylbenzene	Purge and Trap Gas Chromatographic/ Mass Spectrometric Method <sup>[4]</sup>
115	Vanadium	1) Digestion, Electrothermal Atomic Absorption Spectrometric Method <sup>[4]</sup> 2) Digestion, Inductively Coupled Plasma Method <sup>[4]</sup>
116	Vinyl acetate	Purge and Trap Gas Chromatographic/ Mass Spectrometric Method <sup>[4]</sup>
117	Vinyl chloride	Purge and Trap Gas Chromatographic/ Mass Spectrometric Method <sup>[4]</sup>
118	m-Xylene	Purge and Trap Gas Chromatographic/ Mass Spectrometric Method <sup>[4]</sup>
119	o-Xylene	Purge and Trap Gas Chromatographic/ Mass Spectrometric Method <sup>[4]</sup>
120	p-Xylene	Purge and Trap Gas Chromatographic/ Mass Spectrometric Method <sup>[4]</sup>
121	Xylene (Total)	Purge and Trap Gas Chromatographic/ Mass Spectrometric Method <sup>[4]</sup>
122	Zinc	1) Digestion, Direct Air-Acetylene Flame Method <sup>[4]</sup> 2) Digestion, Inductively Coupled Plasma Method <sup>[4]</sup>

จก

อากาศเสีย (ปล่อยระบาย) จำนวน 18 รายการ

ลำดับที่	สารมลพิษ	วิธีวิเคราะห์
1	Antimony	1) Isokinetic Sampling, Digestion, Inductively Coupled Plasma Method <sup>[5]</sup> 2) Isokinetic Sampling, Digestion, Direct Air-Acetylene Flame Method <sup>[5]</sup> 3) Isokinetic Sampling, Digestion, Graphite Furnace Atomic Absorption Spectrometric Method <sup>[5]</sup>
2	Arsenic	Isokinetic Sampling, Digestion, Hydride Generation/ Atomic Absorption Spectrometric Method <sup>[5]</sup>
3	Carbon monoxide	Instrumental Analyzer Method <sup>[5]</sup>
4	Chlorine	Absorption Sampling, Ion Chromatographic Method <sup>[5]</sup>
5	Copper	1) Isokinetic Sampling, Digestion, Inductively Coupled Plasma Method <sup>[5]</sup> 2) Isokinetic Sampling, Digestion, Direct Air-Acetylene Flame Method <sup>[5]</sup>
6	Cresol	Adsorption Sampling, Gas Chromatographic Method <sup>[5]</sup>
7	Dioxins/Furans	Isokinetic Sampling, Analysis by ISO/IEC 17025 Accredited Laboratory or Analysis by Department of Industrial Works Registered Laboratory (Dioxins/Furans Analysis Approved) <sup>[5]</sup>
8	Hydrogen Chloride	Absorption Sampling, Ion Chromatographic Method <sup>[5]</sup>
9	Hydrogen Fluoride	Absorption Sampling, Ion Chromatographic Method <sup>[5]</sup>
10	Hydrogen Sulfide	Absorption Sampling, Iodometric Method <sup>[5]</sup>
11	Lead	1) Isokinetic Sampling, Digestion, Inductively Coupled Plasma Method <sup>[5]</sup> 2) Isokinetic Sampling, Digestion, Direct Air-Acetylene Flame Method <sup>[5]</sup> 3) Isokinetic Sampling, Digestion, Graphite Furnace Atomic Absorption Spectrometric Method <sup>[5]</sup>
12	Mercury	Isokinetic Sampling, Digestion, Cold-Vapor Atomic Absorption Spectrometric Method <sup>[5]</sup>
13	Opacity	Ringelmann's Method <sup>[2]</sup>
14	Oxides of Nitrogen	1) Absorption Sampling, Phenoldisulfonic acid Method <sup>[5]</sup> 2) Instrumental Analyzer Method <sup>[5]</sup>

*Sm*



ลำดับที่	สารมลพิษ	วิธีวิเคราะห์
15	Sulfur dioxide	1) Absorption Sampling, Barium-Thorin Titrimetric Method <sup>[5]</sup> 2) Instrumental Analyzer Method <sup>[5]</sup>
16	Sulfuric acid	Isokinetic Sampling, Barium-Thorin Titrimetric Method <sup>[5]</sup>
17	Total Suspended Particulate	Isokinetic Sampling, Gravimetric Method <sup>[5]</sup>
18	Xylene	Adsorption Sampling, Gas Chromatographic Method <sup>[5]</sup>

สิ่งปฏิกูลหรือวัสดุที่ไม่ใช้แล้ว จำนวน 36 รายการ

ลำดับที่	สารมลพิษ	วิธีวิเคราะห์
1	Aldrin	1) Waste Extraction, Solid-Phase Extraction, Gas Chromatographic Method <sup>[1,10,24]</sup> 2) Solid-Phase Extraction, Gas Chromatographic Method <sup>[10,24]</sup> 3) Soxhlet Extraction, Gas Chromatographic Method <sup>[11,24]</sup>
2	Antimony	1) Waste Extraction, Digestion, Flame Atomic Absorption Spectrometric Method <sup>[1,6,15]</sup> 2) Waste Extraction, Digestion, Graphite Furnace Atomic Absorption Spectrometric Method <sup>[1,6,16]</sup> 3) Waste Extraction, Digestion, Inductively Coupled Plasma Method <sup>[1,6,14]</sup> 4) Digestion, Flame Atomic Absorption Spectrometric Method <sup>[7,15]</sup> 5) Digestion, Graphite Furnace Atomic Absorption Spectrometric Method <sup>[7,16]</sup> 6) Digestion, Inductively Coupled Plasma Method <sup>[7,14]</sup>
3	Arsenic	1) Waste Extraction, Digestion, Hydride Generation/Atomic Absorption Spectrometric Method <sup>[1,6,17]</sup> 2) Digestion, Hydride Generation/Atomic Absorption Spectrometric Method <sup>[7,17]</sup>
4	Barium	1) Waste Extraction, Digestion, Flame Atomic Absorption Spectrometric Method <sup>[1,6,15]</sup> 2) Waste Extraction, Digestion, Graphite Furnace Atomic Absorption Spectrometric Method <sup>[1,6,16]</sup> 3) Waste Extraction, Digestion, Inductively Coupled Plasma Method <sup>[1,6,14]</sup>




ลำดับที่	สารมลพิษ	วิธีวิเคราะห์
5	Beryllium	4) Digestion, Flame Atomic Absorption Spectrometric Method <sup>[7,15]</sup> 5) Digestion, Graphite Furnace Atomic Absorption Spectrometric Method <sup>[7,16]</sup> 6) Digestion, Inductively Coupled Plasma Method <sup>[7,14]</sup> 1) Waste Extraction, Digestion, Flame Atomic Absorption Spectrometric Method <sup>[1,6,15]</sup> 2) Waste Extraction, Digestion, Graphite Furnace Atomic Absorption Spectrometric Method <sup>[1,6,16]</sup> 3) Waste Extraction, Digestion, Inductively Coupled Plasma Method <sup>[1,6,14]</sup>
6	Cadmium	4) Digestion, Flame Atomic Absorption Spectrometric Method <sup>[7,15]</sup> 5) Digestion, Graphite Furnace Atomic Absorption Spectrometric Method <sup>[7,16]</sup> 6) Digestion, Inductively Coupled Plasma Method <sup>[7,14]</sup> 1) Waste Extraction, Digestion, Flame Atomic Absorption Spectrometric Method <sup>[1,6,15]</sup> 2) Waste Extraction, Digestion, Graphite Furnace Atomic Absorption Spectrometric Method <sup>[1,6,16]</sup> 3) Waste Extraction, Digestion, Inductively Coupled Plasma Method <sup>[1,6,14]</sup>
7	Chlordane	4) Digestion, Flame Atomic Absorption Spectrometric Method <sup>[7,15]</sup> 5) Digestion, Graphite Furnace Atomic Absorption Spectrometric Method <sup>[7,16]</sup> 6) Digestion, Inductively Coupled Plasma Method <sup>[7,14]</sup> 1) Waste Extraction, Solid-Phase Extraction, Gas Chromatographic Method <sup>[1,10,24]</sup> 2) Solid-Phase Extraction, Gas Chromatographic Method <sup>[10,24]</sup> 3) Soxhlet Extraction, Gas Chromatographic Method <sup>[11,24]</sup>
8	Chromium	1) Waste Extraction, Digestion, Flame Atomic Absorption Spectrometric Method <sup>[1,6,15]</sup> 2) Waste Extraction, Digestion, Graphite Furnace Atomic Absorption Spectrometric Method <sup>[1,6,16]</sup>

ลำดับที่	สารมลพิษ	วิธีวิเคราะห์
9	Chromium (III)	3) Waste Extraction, Digestion, Inductively Coupled Plasma Method <sup>[1,6,14]</sup> 4) Digestion, Flame Atomic Absorption Spectrometric Method <sup>[7,15]</sup> 5) Digestion, Graphite Furnace Atomic Absorption Spectrometric Method <sup>[7,16]</sup> 6) Digestion, Inductively Coupled Plasma Method <sup>[7,14]</sup> 1) Waste Extraction, Digestion, Flame Atomic Absorption Spectrometric Method; Waste Extraction, Colorimetric Method; Calculation <sup>[1,6,15,18]</sup> 2) Waste Extraction, Digestion, Graphite Furnace Atomic Absorption Spectrometric Method; Waste Extraction, Colorimetric Method; Calculation <sup>[1,6,16,18]</sup> 3) Waste Extraction, Digestion, Inductively Coupled Plasma Method; Waste Extraction, Colorimetric Method; Calculation <sup>[1,6,14,18]</sup> 4) Digestion, Flame Atomic Absorption Spectrometric Method; Alkaline Digestion, Colorimetric Method; Calculation <sup>[7,8,15,18]</sup> 5) Digestion, Graphite Furnace Atomic Absorption Spectrometric Method; Alkaline Digestion, Colorimetric Method; Calculation <sup>[7,8,16,18]</sup> 6) Digestion, Inductively Coupled Plasma Method; Alkaline Digestion, Colorimetric Method; Calculation <sup>[7,8,14,18]</sup>
10	Chromium (VI)	1) Waste Extraction, Colorimetric Method <sup>[1,18]</sup> 2) Alkaline Digestion, Colorimetric Method <sup>[8,18]</sup>
11	Cobalt	1) Waste Extraction, Digestion, Flame Atomic Absorption Spectrometric Method <sup>[1,6,15]</sup> 2) Waste Extraction, Digestion, Graphite Furnace Atomic Absorption Spectrometric Method <sup>[1,6,16]</sup> 3) Waste Extraction, Digestion, Inductively Coupled Plasma Method <sup>[1,6,14]</sup> 4) Digestion, Flame Atomic Absorption Spectrometric Method <sup>[7,15]</sup> 5) Digestion, Graphite Furnace Atomic Absorption Spectrometric Method <sup>[7,16]</sup> 6) Digestion, Inductively Coupled Plasma Method <sup>[7,14]</sup>

ลำดับที่	สารมลพิษ	วิธีวิเคราะห์
12	Copper	1) Waste Extraction, Digestion, Flame Atomic Absorption Spectrometric Method <sup>[1,6,15]</sup> 2) Waste Extraction, Digestion, Graphite Furnace Atomic Absorption Spectrometric Method <sup>[1,6,16]</sup> 3) Waste Extraction, Digestion, Inductively Coupled Plasma Method <sup>[1,6,14]</sup> 4) Digestion, Flame Atomic Absorption Spectrometric Method <sup>[7,15]</sup> 5) Digestion, Graphite Furnace Atomic Absorption Spectrometric Method <sup>[7,16]</sup> 6) Digestion, Inductively Coupled Plasma Method <sup>[7,14]</sup>
13	2,4-D	1) Waste Extraction, Separatory Funnel Liquid-Liquid Extraction, Gas Chromatographic Method <sup>[1,9,24]</sup> 2) Soxhlet Extraction, Gas Chromatographic Method <sup>[11,24]</sup>
14	DDD	1) Waste Extraction, Solid-Phase Extraction, Gas Chromatographic Method <sup>[1,10,24]</sup> 2) Solid-Phase Extraction, Gas Chromatographic Method <sup>[10,24]</sup> 3) Soxhlet Extraction, Gas Chromatographic Method <sup>[11,24]</sup>
15	DDE	1) Waste Extraction, Solid-Phase Extraction, Gas Chromatographic Method <sup>[1,10,24]</sup> 2) Solid-Phase Extraction, Gas Chromatographic Method <sup>[10,24]</sup> 3) Soxhlet Extraction, Gas Chromatographic Method <sup>[11,24]</sup>
16	DDT	1) Waste Extraction, Solid-Phase Extraction, Gas Chromatographic Method <sup>[1,10,24]</sup> 2) Solid-Phase Extraction, Gas Chromatographic Method <sup>[10,24]</sup> 3) Soxhlet Extraction, Gas Chromatographic Method <sup>[11,24]</sup>
17	Dieldrin	1) Waste Extraction, Solid-Phase Extraction, Gas Chromatographic Method <sup>[1,10,24]</sup> 2) Solid-Phase Extraction, Gas Chromatographic Method <sup>[10,24]</sup> 3) Soxhlet Extraction, Gas Chromatographic Method <sup>[11,24]</sup>

ลำดับที่	สารมลพิษ	วิธีวิเคราะห์
18	Endrin	1) Waste Extraction, Solid-Phase Extraction, Gas Chromatographic Method <sup>[1,10,24]</sup> 2) Solid-Phase Extraction, Gas Chromatographic Method <sup>[10,24]</sup> 3) Soxhlet Extraction, Gas Chromatographic Method <sup>[11,24]</sup>
19	Heptachlor	1) Waste Extraction, Solid-Phase Extraction, Gas Chromatographic Method <sup>[1,10,24]</sup> 2) Solid-Phase Extraction, Gas Chromatographic Method <sup>[10,24]</sup> 3) Soxhlet Extraction, Gas Chromatographic Method <sup>[11,24]</sup>
20	Lead	1) Waste Extraction, Digestion, Flame Atomic Absorption Spectrometric Method <sup>[1,6,15]</sup> 2) Waste Extraction, Digestion, Graphite Furnace Atomic Absorption Spectrometric Method <sup>[1,6,16]</sup> 3) Waste Extraction, Digestion, Inductively Coupled Plasma Method <sup>[1,6,14]</sup> 4) Digestion, Flame Atomic Absorption Spectrometric Method <sup>[7,15]</sup> 5) Digestion, Graphite Furnace Atomic Absorption Spectrometric Method <sup>[7,16]</sup> 6) Digestion, Inductively Coupled Plasma Method <sup>[7,14]</sup>
21	Lindane	1) Waste Extraction, Solid-Phase Extraction, Gas Chromatographic Method <sup>[1,10,24]</sup> 2) Solid-Phase Extraction, Gas Chromatographic Method <sup>[10,24]</sup> 3) Soxhlet Extraction, Gas Chromatographic Method <sup>[11,24]</sup>
22	Mercury	1) Waste Extraction, Digestion, Cold-Vapor Atomic Absorption Spectrometric Method <sup>[1,6,19]</sup> 2) Digestion, Cold-Vapor Atomic Absorption Spectrometric Method <sup>[20]</sup>
23	Methoxychlor	1) Waste Extraction, Solid-Phase Extraction, Gas Chromatographic Method <sup>[1,10,24]</sup> 2) Solid-Phase Extraction, Gas Chromatographic Method <sup>[10,24]</sup>

สมล

ลำดับที่	สารมลพิษ	วิธีวิเคราะห์
24	Mirex	3) Soxhlet Extraction, Gas Chromatographic Method <sup>[11,24]</sup> 1) Waste Extraction, Separatory Funnel Liquid-Liquid Extraction, Gas Chromatographic Method <sup>[1,9,24]</sup> 2) Soxhlet Extraction, Gas Chromatographic Method <sup>[11,24]</sup>
25	Molybdenum	1) Waste Extraction, Digestion, Flame Atomic Absorption Spectrometric Method <sup>[1,6,15]</sup> 2) Waste Extraction, Digestion, Graphite Furnace Atomic Absorption Spectrometric Method <sup>[1,6,16]</sup> 3) Waste Extraction, Digestion, Inductively Coupled Plasma Method <sup>[1,6,14]</sup> 4) Digestion, Flame Atomic Absorption Spectrometric Method <sup>[7,15]</sup> 5) Digestion, Graphite Furnace Atomic Absorption Spectrometric Method <sup>[7,16]</sup> 6) Digestion, Inductively Coupled Plasma Method <sup>[7,14]</sup>
26	Nickel	1) Waste Extraction, Digestion, Flame Atomic Absorption Spectrometric Method <sup>[1,6,15]</sup> 2) Waste Extraction, Digestion, Graphite Furnace Atomic Absorption Spectrometric Method <sup>[1,6,16]</sup> 3) Waste Extraction, Digestion, Inductively Coupled Plasma Method <sup>[1,6,14]</sup> 4) Digestion, Flame Atomic Absorption Spectrometric Method <sup>[7,15]</sup> 5) Digestion, Graphite Furnace Atomic Absorption Spectrometric Method <sup>[7,16]</sup> 6) Digestion, Inductively Coupled Plasma Method <sup>[7,14]</sup>
27	Polychlorinated Biphenyls Aroclor 1016 Aroclor 1221 Aroclor 1232 Aroclor 1242 Aroclor 1248 Aroclor 1254 Aroclor 1260 2,4,4'-Trichlorobiphenyl 2,2',5,5'-Tetrachlorobiphenyl	1) Waste Extraction, Separatory Funnel Liquid-Liquid Extraction, Gas Chromatographic Method <sup>[1,9,25]</sup> 2) Waste Extraction, Solid-Phase Extraction, Gas Chromatographic Method <sup>[1,10,25]</sup> 3) Soxhlet Extraction, Gas Chromatographic Method <sup>[11,25]</sup> 

ลำดับที่	สารมลพิษ	วิธีวิเคราะห์
28	2,2',4,5,5'-Pentachlorobiphenyl 2,2',3,4,4',5'- Hexachlorobiphenyl 2,2',4,4',5,5'- Hexachlorobiphenyl 2,2',3,4,4',5,5'- Heptachlorobiphenyl Pentachlorophenol	1) Waste Extraction, Separatory Funnel Liquid-Liquid Extraction, Gas Chromatographic Method <sup>[1,9,24]</sup> 2) Soxhlet Extraction, Gas Chromatographic Method <sup>[11,24]</sup>
29	Selenium	1) Waste Extraction, Digestion, Hydride Generation/ Atomic Absorption Spectrometric Method <sup>[1,6,21]</sup> 2) Digestion, Hydride Generation/Atomic Absorption Spectrometric Method <sup>[7,21]</sup>
30	Silver	1) Waste Extraction, Digestion, Flame Atomic Absorption Spectrometric Method <sup>[1,6,15]</sup> 2) Waste Extraction, Digestion, Graphite Furnace Atomic Absorption Spectrometric Method <sup>[1,6,16]</sup> 3) Waste Extraction, Digestion, Inductively Coupled Plasma Method <sup>[1,6,14]</sup> 4) Digestion, Flame Atomic Absorption Spectrometric Method <sup>[7,15]</sup> 5) Digestion, Graphite Furnace Atomic Absorption Spectrometric Method <sup>[7,16]</sup> 6) Digestion, Inductively Coupled Plasma Method <sup>[7,14]</sup>
31	Thallium	1) Waste Extraction, Digestion, Flame Atomic Absorption Spectrometric Method <sup>[1,6,15]</sup> 2) Waste Extraction, Digestion, Graphite Furnace Atomic Absorption Spectrometric Method <sup>[1,6,16]</sup> 3) Waste Extraction, Digestion, Inductively Coupled Plasma Method <sup>[1,6,14]</sup> 4) Digestion, Flame Atomic Absorption Spectrometric Method <sup>[7,15]</sup> 5) Digestion, Graphite Furnace Atomic Absorption Spectrometric Method <sup>[7,16]</sup> 6) Digestion, Inductively Coupled Plasma Method <sup>[7,14]</sup>

*Signature*

ลำดับที่	สารมลพิษ	วิธีวิเคราะห์
32	Toxaphene	1) Waste Extraction, Solid-Phase Extraction, Gas Chromatographic Method <sup>[1,10,24]</sup> 2) Solid-Phase Extraction, Gas Chromatographic Method <sup>[10,24]</sup> 3) Soxhlet Extraction, Gas Chromatographic/Mass Spectrometric Method <sup>[11,27]</sup>
33	Trichloroethylene	1) Waste Extraction, Purge and Trap, Gas Chromatographic/Mass Spectrometric Method <sup>[1,12,26]</sup> 2) Purge and Trap, Gas Chromatographic/Mass Spectrometric Method <sup>[13,26]</sup>
34	Vanadium	1) Waste Extraction, Digestion, Flame Atomic Absorption Spectrometric Method <sup>[1,6,15]</sup> 2) Waste Extraction, Digestion, Graphite Furnace Atomic Absorption Spectrometric Method <sup>[1,6,16]</sup> 3) Waste Extraction, Digestion, Inductively Coupled Plasma Method <sup>[1,6,14]</sup> 4) Digestion, Flame Atomic Absorption Spectrometric Method <sup>[7,15]</sup> 5) Digestion, Graphite Furnace Atomic Absorption Spectrometric Method <sup>[7,16]</sup> 6) Digestion, Inductively Coupled Plasma Method <sup>[7,14]</sup>
35	Vinyl chloride	Purge and Trap, Gas Chromatographic/Mass Spectrometric Method <sup>[13,26]</sup>
36	Zinc	1) Waste Extraction, Digestion, Flame Atomic Absorption Spectrometric Method <sup>[1,6,15]</sup> 2) Waste Extraction, Digestion, Graphite Furnace Atomic Absorption Spectrometric Method <sup>[1,6,16]</sup> 3) Waste Extraction, Digestion, Inductively Coupled Plasma Method <sup>[1,6,14]</sup> 4) Digestion, Flame Atomic Absorption Spectrometric Method <sup>[7,15]</sup> 5) Digestion, Graphite Furnace Atomic Absorption Spectrometric Method <sup>[7,16]</sup> 6) Digestion, Inductively Coupled Plasma Method <sup>[7,14]</sup>


วิมล



ดิน จำนวน 121 รายการ

ลำดับที่	สารมลพิษ	วิธีวิเคราะห์
1	Acenaphthene	Soxhlet Extraction, Gas Chromatographic/ Mass Spectrometric Method <sup>[11,27]</sup>
2	Acetone	Purge and Trap, Gas Chromatographic/ Mass Spectrometric Method <sup>[13,26]</sup>
3	Aldrin	Soxhlet Extraction, Gas Chromatographic Method <sup>[11,24]</sup>
4	Anthracene	Soxhlet Extraction, Gas Chromatographic/ Mass Spectrometric Method <sup>[11,27]</sup>
5	Antimony	1) Digestion, Flame Atomic Absorption Spectrometric Method <sup>[7,15]</sup> 2) Digestion, Graphite Furnace Atomic Absorption Spectrometric Method <sup>[7,16]</sup> 3) Digestion, Inductively Coupled Plasma Method <sup>[7,14]</sup>
6	Arsenic	Digestion, Hydride Generation/Atomic Absorption Spectrometric Method <sup>[7,17]</sup>
7	Atrazine	Soxhlet Extraction, Gas Chromatographic Method <sup>[11,24]</sup>
8	Barium	1) Digestion, Flame Atomic Absorption Spectrometric Method <sup>[7,15]</sup> 2) Digestion, Graphite Furnace Atomic Absorption Spectrometric Method <sup>[7,16]</sup> 3) Digestion, Inductively Coupled Plasma Method <sup>[7,14]</sup>
9	Benz(a)anthracene	Soxhlet Extraction, Gas Chromatographic/ Mass Spectrometric Method <sup>[11,27]</sup>
10	Benzene	Purge and Trap, Gas Chromatographic/ Mass Spectrometric Method <sup>[13,26]</sup>
11	Benzo(b)fluoranthene	Soxhlet Extraction, Gas Chromatographic/ Mass Spectrometric Method <sup>[11,27]</sup>
12	Benzo(k)fluoranthene	Soxhlet Extraction, Gas Chromatographic/ Mass Spectrometric Method <sup>[11,27]</sup>
13	Benzoic acid	Soxhlet Extraction, Gas Chromatographic Method <sup>[11,23]</sup>
14	Benzo(a)pyrene	Soxhlet Extraction, Gas Chromatographic/ Mass Spectrometric Method <sup>[11,27]</sup>
15	Benzo(g,h,i)perylene	Soxhlet Extraction, Gas Chromatographic/ Mass Spectrometric Method <sup>[11,27]</sup>
16	Beryllium	1) Digestion, Flame Atomic Absorption Spectrometric Method <sup>[7,15]</sup>

*Signature*

ลำดับที่	สารมลพิษ	วิธีวิเคราะห์
17	Bis(2-chloroethyl)ether	2) Digestion, Graphite Furnace Atomic Absorption Spectrometric Method <sup>[7,16]</sup> 3) Digestion, Inductively Coupled Plasma Method <sup>[7,14]</sup> Soxhlet Extraction, Gas Chromatographic/ Mass Spectrometric Method <sup>[11,27]</sup>
18	Bis(2-ethylhexyl)phthalate	Soxhlet Extraction, Gas Chromatographic/ Mass Spectrometric Method <sup>[11,27]</sup>
19	Bromodichloromethane	Purge and Trap, Gas Chromatographic/ Mass Spectrometric Method <sup>[13,26]</sup>
20	Bromoform	Purge and Trap, Gas Chromatographic/ Mass Spectrometric Method <sup>[13,26]</sup>
21	Butanol	Purge and Trap, Gas Chromatographic/ Mass Spectrometric Method <sup>[13,26]</sup>
22	Butyl benzyl phthalate	Soxhlet Extraction, Gas Chromatographic/ Mass Spectrometric Method <sup>[11,27]</sup>
23	Cadmium	1) Digestion, Flame Atomic Absorption Spectrometric Method <sup>[7,15]</sup> 2) Digestion, Graphite Furnace Atomic Absorption Spectrometric Method <sup>[7,16]</sup> 3) Digestion, Inductively Coupled Plasma Method <sup>[7,14]</sup>
24	Carbazole	Soxhlet Extraction, Gas Chromatographic/ Mass Spectrometric Method <sup>[11,27]</sup>
25	Carbon disulfide	Purge and Trap, Gas Chromatographic/ Mass Spectrometric Method <sup>[13,26]</sup>
26	Carbon tetrachloride	Purge and Trap, Gas Chromatographic/ Mass Spectrometric Method <sup>[13,26]</sup>
27	Chlordane	Soxhlet Extraction, Gas Chromatographic Method <sup>[11,24]</sup>
28	p-Chloroaniline	Soxhlet Extraction, Gas Chromatographic/ Mass Spectrometric Method <sup>[11,27]</sup>
29	Chlorobenzene	Purge and Trap, Gas Chromatographic/ Mass Spectrometric Method <sup>[13,26]</sup>
30	Chlorodibromomethane	Purge and Trap, Gas Chromatographic/ Mass Spectrometric Method <sup>[13,26]</sup>
31	Chloroform	Purge and Trap, Gas Chromatographic/ Mass Spectrometric Method <sup>[13,26]</sup>
32	Chromium	1) Digestion, Flame Atomic Absorption Spectrometric Method <sup>[7,15]</sup> 

ลำดับที่	สารมลพิษ	วิธีวิเคราะห์
33	Chromium (III)	2) Digestion, Graphite Furnace Atomic Absorption Spectrometric Method <sup>[7,16]</sup> 3) Digestion, Inductively Coupled Plasma Method <sup>[7,14]</sup> 1) Digestion, Flame Atomic Absorption Spectrometric Method; Alkaline Digestion, Colorimetric Method; Calculation <sup>[7,8,15,18]</sup> 2) Digestion, Graphite Furnace Atomic Absorption Spectrometric Method; Alkaline Digestion, Colorimetric Method; Calculation <sup>[7,8,16,18]</sup> 3) Digestion, Inductively Coupled Plasma Method; Alkaline Digestion, Colorimetric Method; Calculation <sup>[7,8,14,18]</sup>
34	Chromium (VI)	Alkaline Digestion, Colorimetric Method <sup>[8,18]</sup>
35	Chrysene	Soxhlet Extraction, Gas Chromatographic/Mass Spectrometric Method <sup>[11,27]</sup>
36	Cyanide	1) Extraction, Distillation, Titrimetric Method <sup>[28,29,30]</sup> 2) Extraction, Distillation, Colorimetric Method <sup>[28,29,30]</sup>
37	2,4-D	Soxhlet Extraction, Gas Chromatographic Method <sup>[11,24]</sup>
38	DDD	Soxhlet Extraction, Gas Chromatographic Method <sup>[11,24]</sup>
39	DDE	Soxhlet Extraction, Gas Chromatographic Method <sup>[11,24]</sup>
40	DDT	Soxhlet Extraction, Gas Chromatographic Method <sup>[11,24]</sup>
41	Dibenz(a,h)anthracene	Soxhlet Extraction, Gas Chromatographic/Mass Spectrometric Method <sup>[11,27]</sup>
42	Di-n-butyl phthalate	Soxhlet Extraction, Gas Chromatographic/Mass Spectrometric Method <sup>[11,27]</sup>
43	1,2-Dichlorobenzene	Purge and Trap, Gas Chromatographic/Mass Spectrometric Method <sup>[13,26]</sup>
44	1,3-Dichlorobenzene	Purge and Trap, Gas Chromatographic/Mass Spectrometric Method <sup>[13,26]</sup>
45	1,4-Dichlorobenzene	Purge and Trap, Gas Chromatographic/Mass Spectrometric Method <sup>[13,26]</sup>
46	1,1-Dichloroethane	Purge and Trap, Gas Chromatographic/Mass Spectrometric Method <sup>[13,26]</sup>
47	1,2-Dichloroethane	Purge and Trap, Gas Chromatographic/Mass Spectrometric Method <sup>[13,26]</sup>
48	1,1-Dichloroethylene	Purge and Trap, Gas Chromatographic/Mass Spectrometric Method <sup>[13,26]</sup>

3m91

ลำดับที่	สารมลพิษ	วิธีวิเคราะห์
49	cis-1,2-Dichloroethylene	Purge and Trap, Gas Chromatographic/ Mass Spectrometric Method <sup>[13,26]</sup>
50	trans-1,2-Dichloroethylene	Purge and Trap, Gas Chromatographic/ Mass Spectrometric Method <sup>[13,26]</sup>
51	1,2-Dichloropropane	Purge and Trap, Gas Chromatographic/ Mass Spectrometric Method <sup>[13,26]</sup>
52	1,3-Dichloropropane	Purge and Trap, Gas Chromatographic/ Mass Spectrometric Method <sup>[13,26]</sup>
53	1,3-Dichloropropene	Purge and Trap, Gas Chromatographic/ Mass Spectrometric Method <sup>[13,26]</sup>
54	Dieldrin	Soxhlet Extraction, Gas Chromatographic Method <sup>[11,24]</sup>
55	Diethyl phthalate	Soxhlet Extraction, Gas Chromatographic/ Mass Spectrometric Method <sup>[11,27]</sup>
56	2,4-Dimethylphenol	Soxhlet Extraction, Gas Chromatographic Method <sup>[11,23]</sup>
57	2,4-Dinitrophenol	Soxhlet Extraction, Gas Chromatographic Method <sup>[11,23]</sup>
58	2,4-Dinitrotoluene	Soxhlet Extraction, Gas Chromatographic Method <sup>[11,23]</sup>
59	2,6-Dinitrotoluene	Soxhlet Extraction, Gas Chromatographic Method <sup>[11,23]</sup>
60	Di-n-Octyl phthalate	Soxhlet Extraction, Gas Chromatographic/ Mass Spectrometric Method <sup>[11,27]</sup>
61	Endosulfan	Soxhlet Extraction, Gas Chromatographic Method <sup>[11,24]</sup>
62	Endrin	Soxhlet Extraction, Gas Chromatographic Method <sup>[11,24]</sup>
63	Ethylbenzene	Purge and Trap, Gas Chromatographic/ Mass Spectrometric Method <sup>[13,26]</sup>
64	Fluoranthene	Soxhlet Extraction, Gas Chromatographic/ Mass Spectrometric Method <sup>[11,27]</sup>
65	Fluorene	Soxhlet Extraction, Gas Chromatographic/ Mass Spectrometric Method <sup>[11,27]</sup>
66	Heptachlor	Soxhlet Extraction, Gas Chromatographic Method <sup>[11,24]</sup>
67	Heptachlor epoxide	Soxhlet Extraction, Gas Chromatographic Method <sup>[11,24]</sup>
68	Hexachloro-1,3-butadiene	Purge and Trap, Gas Chromatographic/ Mass Spectrometric Method <sup>[13,26]</sup>
69	n-Hexane	Purge and Trap, Gas Chromatographic/ Mass Spectrometric Method <sup>[13,26]</sup>
70	$\alpha$ -HCH	Soxhlet Extraction, Gas Chromatographic Method <sup>[11,24]</sup>
71	$\beta$ -HCH	Soxhlet Extraction, Gas Chromatographic Method <sup>[11,24]</sup>
72	$\gamma$ -HCH	Soxhlet Extraction, Gas Chromatographic Method <sup>[11,24]</sup>

ลำดับที่	สารมลพิษ	วิธีวิเคราะห์
73	Hexachlorocyclopentadiene	Soxhlet Extraction, Gas Chromatographic/ Mass Spectrometric Method <sup>[11,27]</sup>
74	Hexachloroethane	Soxhlet Extraction, Gas Chromatographic/ Mass Spectrometric Method <sup>[11,27]</sup>
75	Indeno(1,2,3-cd)pyrene	Soxhlet Extraction, Gas Chromatographic/ Mass Spectrometric Method <sup>[11,27]</sup>
76	Isophorone	Soxhlet Extraction, Gas Chromatographic/ Mass Spectrometric Method <sup>[11,27]</sup>
77	Lead	1) Digestion, Flame Atomic Absorption Spectrometric Method <sup>[7,15]</sup> 2) Digestion, Graphite Furnace Atomic Absorption Spectrometric Method <sup>[7,16]</sup> 3) Digestion, Inductively Coupled Plasma Method <sup>[7,14]</sup>
78	Manganese	1) Digestion, Flame Atomic Absorption Spectrometric Method <sup>[7,15]</sup> 2) Digestion, Graphite Furnace Atomic Absorption Spectrometric Method <sup>[7,16]</sup> 3) Digestion, Inductively Coupled Plasma Method <sup>[7,14]</sup>
79	Mercury	Digestion, Cold-Vapor Atomic Absorption Spectrometric Method <sup>[20]</sup>
80	Methanol	Purge and Trap, Gas Chromatographic/ Mass Spectrometric Method <sup>[13,26]</sup>
81	Methoxychlor	Soxhlet Extraction, Gas Chromatographic Method <sup>[11,24]</sup>
82	Methyl bromide	Purge and Trap, Gas Chromatographic/ Mass Spectrometric Method <sup>[13,26]</sup>
83	Methylene chloride	Purge and Trap, Gas Chromatographic/ Mass Spectrometric Method <sup>[13,26]</sup>
84	2-Methylphenol	Soxhlet Extraction, Gas Chromatographic Method <sup>[11,23]</sup>
85	2-Methylnaphthalene	Soxhlet Extraction, Gas Chromatographic/ Mass Spectrometric Method <sup>[11,27]</sup>
86	Methyl tert-butyl ether	Purge and Trap, Gas Chromatographic/ Mass Spectrometric Method <sup>[13,26]</sup>
87	Naphthalene	Purge and Trap, Gas Chromatographic/ Mass Spectrometric Method <sup>[13,26]</sup>
88	Nickel	1) Digestion, Flame Atomic Absorption Spectrometric Method <sup>[7,15]</sup> 2) Digestion, Graphite Furnace Atomic Absorption Spectrometric Method <sup>[7,16]</sup> 3) Digestion, Inductively Coupled Plasma Method <sup>[7,14]</sup>

สม

ลำดับที่	สารมลพิษ	วิธีวิเคราะห์
89	Nitrobenzene	Soxhlet Extraction, Gas Chromatographic/ Mass Spectrometric Method <sup>[11,27]</sup>
90	N-Nitrosodiphenylamine	Soxhlet Extraction, Gas Chromatographic/ Mass Spectrometric Method <sup>[11,27]</sup>
91	N-Nitrosodi-n-propylamine	Soxhlet Extraction, Gas Chromatographic/ Mass Spectrometric Method <sup>[11,27]</sup>
92	Polychlorinated Biphenyls Aroclor 1016 Aroclor 1221 Aroclor 1232 Aroclor 1242 Aroclor 1248 Aroclor 1254 Aroclor 1260 2,2',5,5'-Tetrachlorobiphenyl 2,2',4,5,5'-Pentachlorobiphenyl 2,2',3,4,4',5'- Hexachlorobiphenyl 2,2',4,4',5,5'- Hexachlorobiphenyl 2,2',3,4,4',5,5'- Heptachlorobiphenyl	Soxhlet Extraction, Gas Chromatographic Method <sup>[11,25]</sup>
93	Pentachlorophenol	Soxhlet Extraction, Gas Chromatographic Method <sup>[11,24]</sup>
94	Phenanthrene	Soxhlet Extraction, Gas Chromatographic/ Mass Spectrometric Method <sup>[11,27]</sup>
95	Phenol	Soxhlet Extraction, Gas Chromatographic Method <sup>[11,23]</sup>
96	Pyrene	Soxhlet Extraction, Gas Chromatographic/ Mass Spectrometric Method <sup>[11,27]</sup>
97	Selenium	Digestion, Hydride Generation/Atomic Absorption Spectrometric Method <sup>[7,21]</sup>
98	Silver	1) Digestion, Flame Atomic Absorption Spectrometric Method <sup>[7,15]</sup> 2) Digestion, Graphite Furnace Atomic Absorption Spectrometric Method <sup>[7,16]</sup> 3) Digestion, Inductively Coupled Plasma Method <sup>[7,14]</sup>
99	Styrene	Purge and Trap, Gas Chromatographic/ Mass Spectrometric Method <sup>[13,26]</sup>

สม

ลำดับที่	สารมลพิษ	วิธีวิเคราะห์
100	1,1,2,2-Tetrachloroethane	Purge and Trap, Gas Chromatographic/ Mass Spectrometric Method <sup>[13,26]</sup>
101	Tetrachloroethylene	Purge and Trap, Gas Chromatographic/ Mass Spectrometric Method <sup>[13,26]</sup>
102	Toluene	Purge and Trap, Gas Chromatographic/ Mass Spectrometric Method <sup>[13,26]</sup>
103	Toxaphene	Soxhlet Extraction, Gas Chromatographic Method <sup>[11,24]</sup>
104	TPH (C <sub>5</sub> -C <sub>8</sub> )	Purge and Trap, Gas Chromatographic/ Mass Spectrometric Method <sup>[13,26]</sup>
105	TPH (C <sub>&gt;8</sub> -C <sub>16</sub> )	Soxhlet Extraction, Gas Chromatographic Method <sup>[11,22]</sup>
106	TPH (C <sub>&gt;16</sub> -C <sub>35</sub> )	Soxhlet Extraction, Gas Chromatographic Method <sup>[11,22]</sup>
107	1,2,4-Trichlorobenzene	Purge and Trap, Gas Chromatographic/ Mass Spectrometric Method <sup>[13,26]</sup>
108	1,1,1-Trichloroethane	Purge and Trap, Gas Chromatographic/ Mass Spectrometric Method <sup>[13,26]</sup>
109	1,1,2-Trichloroethane	Purge and Trap, Gas Chromatographic/ Mass Spectrometric Method <sup>[13,26]</sup>
110	Trichloroethylene	Purge and Trap, Gas Chromatographic/ Mass Spectrometric Method <sup>[13,26]</sup>
111	2,4,5-Trichlorophenol	Soxhlet Extraction, Gas Chromatographic Method <sup>[11,23]</sup>
112	2,4,6-Trichlorophenol	Soxhlet Extraction, Gas Chromatographic Method <sup>[11,23]</sup>
113	1,3,5-Trimethylbenzene	Purge and Trap, Gas Chromatographic/ Mass Spectrometric Method <sup>[13,26]</sup>
114	Vanadium	1) Digestion, Flame Atomic Absorption Spectrometric Method <sup>[7,15]</sup> 2) Digestion, Graphite Furnace Atomic Absorption Spectrometric Method <sup>[7,16]</sup> 3) Digestion, Inductively Coupled Plasma Method <sup>[7,14]</sup>
115	Vinyl acetate	Purge and Trap, Gas Chromatographic/ Mass Spectrometric Method <sup>[13,26]</sup>
116	Vinyl chloride	Purge and Trap, Gas Chromatographic/ Mass Spectrometric Method <sup>[13,26]</sup>
117	m-Xylene	Purge and Trap, Gas Chromatographic/ Mass Spectrometric Method <sup>[13,26]</sup>
118	o-Xylene	Purge and Trap, Gas Chromatographic/ Mass Spectrometric Method <sup>[13,26]</sup>
119	p-Xylene	Purge and Trap, Gas Chromatographic/ Mass Spectrometric Method <sup>[13,26]</sup>

*3m*

ลำดับที่	สารมลพิษ	วิธีวิเคราะห์
120	Xylene (Total)	Purge and Trap, Gas Chromatographic/ Mass Spectrometric Method <sup>[13,26]</sup>
121	Zinc	1) Digestion, Flame Atomic Absorption Spectrometric Method <sup>[7,15]</sup> 2) Digestion, Graphite Furnace Atomic Absorption Spectrometric Method <sup>[7,16]</sup> 3) Digestion, Inductively Coupled Plasma Method <sup>[7,14]</sup>

### เอกสารอ้างอิง

1. กระทรวงอุตสาหกรรม. ประกาศกระทรวงอุตสาหกรรม, พ.ศ. 2548. เรื่อง การกำจัดสิ่งปฏิกูลหรือวัสดุที่ไม่ใช้แล้ว.ราชกิจจานุเบกษา. 25 มกราคม 2549. เล่มที่ 123 ตอนพิเศษ 11ง.

2. กระทรวงอุตสาหกรรม. ประกาศกระทรวงอุตสาหกรรม, พ.ศ. 2549. เรื่อง กำหนดค่าปริมาณเขม่าควันที่เจือปนในอากาศที่ระบายออกจากปล่องของหม้อน้ำโรงสีข้าวที่ใช้กลบเป็นเชื้อเพลิง.

ราชกิจจานุเบกษา. 4 ธันวาคม 2549. เล่มที่ 123 ตอนพิเศษ 125ง.

3. สมาคมวิศวกรรมสิ่งแวดล้อมแห่งประเทศไทย. คู่มือวิเคราะห์น้ำเสีย. พิมพ์ครั้งที่ 4. กรุงเทพฯ: เรือนแก้วการพิมพ์, 2547.

4. APHA, AWWA, WEF. **Standard Methods for the Examination of Water and Wastewater**. 23<sup>rd</sup> ed. Washington, DC: APHA, 2017.

5. United States Environmental Protection Agency. **Standards of Performance for New Stationary Sources**. 40 CFR 60. Appendix A, 2022.

6. United States Environmental Protection Agency. **Test Methods for Evaluation Solid Waste Physical/Chemical Methods**. SW-846, 1997.

7. United States Environmental Protection Agency. **Test Methods for Evaluation Solid Waste Physical/Chemical Methods. Acid Digestion of Sludges and Sediments and Soils**. SW-846 Method 3050B, 1996.

8. United States Environmental Protection Agency. **Test Methods for Evaluation Solid Waste Physical/Chemical Methods. Alkaline Digestion for Hexavalent Chromium**. SW-846 Method 3060A, 1996.

9. United States Environmental Protection Agency. **Test Methods for Evaluation Solid Waste Physical/Chemical Methods. Separatory Funnel Liquid-Liquid Extraction**. SW-846 Method 3510C, 1996.

10. United States Environmental Protection Agency. **Test Methods for Evaluation Solid Waste Physical/Chemical Methods. Solid Phase Extraction**. SW-846 Method 3535A, 2007.

11. United States Environmental Protection Agency. **Test Methods for Evaluation Solid Waste Physical/Chemical Methods. Soxhlet Extraction**. SW-846 Method 3540C, 1996. 3m



12. United States Environmental Protection Agency. Test Methods for Evaluation Solid Waste Physical/Chemical Methods. **Purge-and-Trap for Aqueous Samples. SW-846 Method 5030C**, 2003.

13. United States Environmental Protection Agency. Test Methods for Evaluation Solid Waste Physical/Chemical Methods. **Closed-System Purge-and-Trap and Extraction for Volatile Organics in Soil and Waste Samples. SW-846 Method 5035A**, 2007.

14. United States Environmental Protection Agency. Test Methods for Evaluation Solid Waste Physical/Chemical Methods. **Inductively Coupled Plasma-Optical Emission Spectrometry. SW-846 Method 6010D**, 2018.

15. United States Environmental Protection Agency. Test Methods for Evaluation Solid Waste Physical/Chemical Methods. **Flame Atomic Absorption Spectrophotometry. SW-846 Method 7000B**, 2007.

16. United States Environmental Protection Agency. Test Methods for Evaluation Solid Waste Physical/Chemical Methods. **Graphite Furnace Atomic Absorption Spectrophotometry. SW-846 Method 7010**, 2007.

17. United States Environmental Protection Agency. Test Methods for Evaluation Solid Waste Physical/Chemical Methods. **Arsenic (Atomic Absorption, Gaseous Hydride). SW-846 Method 7061A**, 1992.

18. United States Environmental Protection Agency. Test Methods for Evaluation Solid Waste Physical/Chemical Methods. **Chromium, Hexavalent (Colorimetric). SW-846 Method 7196A**, 1992.

19. United States Environmental Protection Agency. Test Methods for Evaluation Solid Waste Physical/Chemical Methods. **Mercury in Liquid Waste (Manual Cold-Vapor Technique). SW-846 Method 7470A**, 1994.

20. United States Environmental Protection Agency. Test Methods for Evaluation Solid Waste Physical/Chemical Methods. **Mercury in Solid or Semisolid Waste (Manual Cold-Vapor Technique). SW-846 Method 7471A**, 1994.

21. United States Environmental Protection Agency. Test Methods for Evaluation Solid Waste Physical/Chemical Methods. **Selenium (Atomic Absorption, Borohydride Reduction). SW-846 Method 7742**, 1994.

22. United States Environmental Protection Agency. Test Methods for Evaluation Solid Waste Physical/Chemical Methods. **Nonhalogenated Organics Using GC/FID. SW-846 Method 8015D**, 2003.

23. United States Environmental Protection Agency. Test Methods for Evaluation Solid Waste Physical/Chemical Methods. **Phenols by Gas Chromatography. SW-846 Method 8041**, 1996. *Small*

24. United States...

24. United States Environmental Protection Agency. Test Methods for Evaluation Solid Waste Physical/Chemical Methods. **Organochlorine Pesticides by Gas Chromatography. SW-846 Method 8081B**, 2007.

25. United States Environmental Protection Agency. Test Methods for Evaluation Solid Waste Physical/Chemical Methods. **Polychlorinate Biphenyls (PCBs) by Gas Chromatography. SW-846 Method 8082A**, 2007.

26. United States Environmental Protection Agency. Test Methods for Evaluation Solid Waste Physical/Chemical Methods. **Volatile Organic Compounds by Gas Chromatography/Mass Spectrometry (GC/MS). SW-846 Method 8260C**, 2006.

27. United States Environmental Protection Agency. Test Methods for Evaluation Solid Waste Physical/Chemical Methods. **Semivolatile Organic Compounds by Gas Chromatography/Mass Spectrometry. SW-846 Method 8270D**, 2014.

28. United States Environmental Protection Agency. Test Methods for Evaluation Solid Waste Physical/Chemical Methods. **Total and Amenable Cyanide: Distillation. SW-846 Method 9010C**, 2004.

29. United States Environmental Protection Agency. Test Methods for Evaluation Solid Waste Physical/Chemical Methods. **Cyanide Extraction Procedure for Solids and Oil. SW-846 Method 9013A**, 1996.

30. United States Environmental Protection Agency. Test Methods for Evaluation Solid Waste Physical/Chemical Methods. **Cyanide in Waters and Extracts Using Titrimetric and Manual Spectrophotometric Procedures. SW-846 Method 9014**, 2014. 